

TYPICAL INDICATOR ORDERING EXAMPLE



| Lamps | |
|--------------|----------|
| Incandescent | |
| 06 | 6-volt |
| 12 | 12-volt |
| 18 | 18-volt |
| 24 | 24-volt |
| 28 | 28-volt |
| Neon | |
| N | 110-volt |

| Cap Colors | |
|------------|--------|
| B | White |
| C | Red |
| D | Orange |
| E | Yellow |
| *F | Green |
| *G | Blue |

*F & G not suitable with neon.

| Bezels | |
|--------|---------------------|
| 1 | .787" (20.0mm) Wide |
| 2 | .937" (23.8mm) Wide |

| Bezel Colors | |
|--------------|--------|
| A | Black |
| B | White |
| C | Red |
| D | Orange |
| E | Yellow |
| F | Green |
| G | Blue |
| H | Gray |

DESCRIPTION FOR TYPICAL ORDERING EXAMPLE



P01-12-C-1A



Note: Wire harness & cable assemblies offered only in Americas

LAMP CODES & SPECIFICATIONS

Incandescent & Neon Lamps for Solid & Design Caps

| AT602 Incandescent | AT602N Neon | $L(+) \text{---} \text{---} \text{---} L(-)$ | 06 | 12 | 18 | 24 | 28 | N | |
|---|---|---|---------------|------|------|------|------|-------------|--|
|  |  | | | | | | | | |
| | | Voltage | 6V | 12V | 18V | 24V | 28V | 110V | |
| | | Current | 80mA | 50mA | 35mA | 25mA | 22mA | 1.5mA | |
| | | MSCP | .159 | .215 | .398 | .215 | .247 | NA | |
| | | Endurance | 2,000 Average | | | | | 15,000 Avg. | |
| | | Ambient Temperature Range | -10° ~ +50°C | | | | | | |
| | | Recommended Resistor for Neon: 33K ohms for 110V AC & 100K ohms for 220V AC | | | | | | | |

T- 1 1/2 Pilot Slide Base

Electrical specifications are determined at a basic temperature of 25°C.
For dimension drawings of lamps, see Accessories & Hardware Index.

If the source voltage is greater than rated voltage, a ballast resistor is required.
The ballast resistor calculation and more lamp detail are shown in the Supplement section.

CAP COLORS

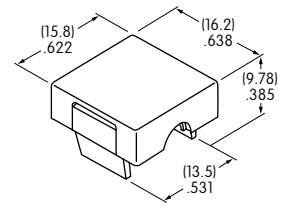
| | | |
|----------------|-----------------|----------------|
| B White | D Orange | F Green |
| C Red | E Yellow | G Blue |

Material: Polycarbonate

Finish: Glossy

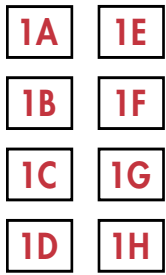
F & G not suitable for neon

AT429

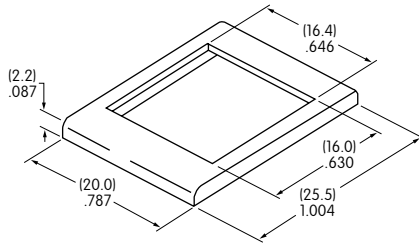


Toggles
 Rockers
 Pushbuttons
 Illuminated PB
 Programmable
 Keylocks
 Rotaries
 Slides
 Tactiles
 Tilt
 Touch
 Accessories
 Supplement

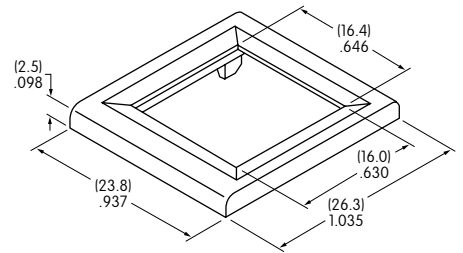
OPTIONAL BEZELS & COLORS



AT204
.787" (20.0mm) Wide Bezel



AT9201
.937" (23.8mm) Wide Bezel



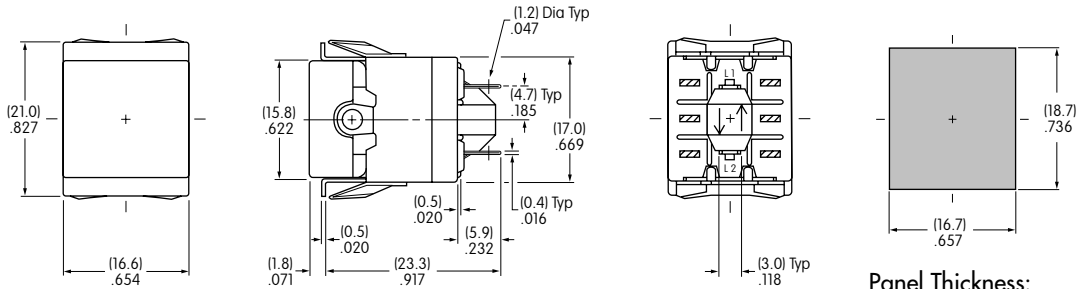
Material: Polycarbonate

Standard Finish: Glossy

Color Codes: A Black B White C Red D Orange E Yellow F Green G Blue H Gray

TYPICAL INDICATOR DIMENSIONS

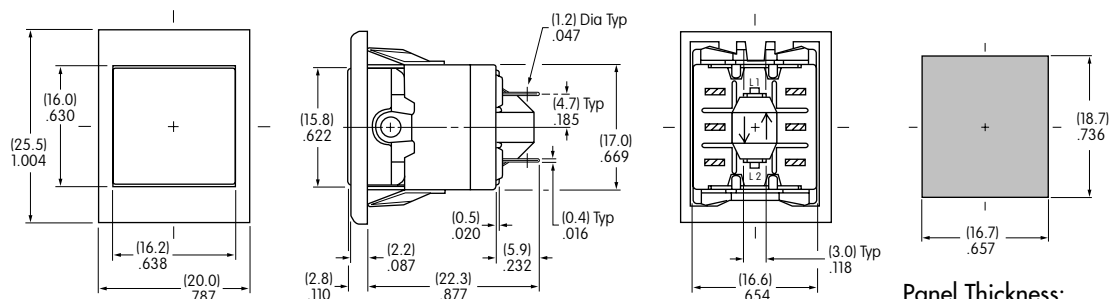
Without Bezel



P01-12-C

Panel Thickness:
 .039" ~ .157"
 (1.0mm ~ 4.0mm)

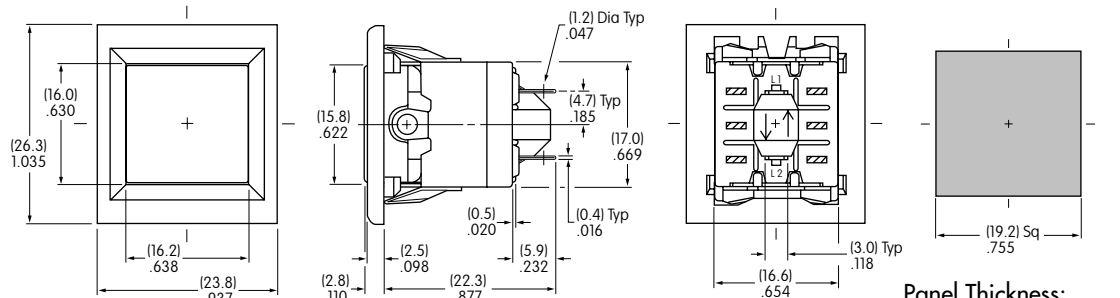
With Bezel



P01-12-C-1A

Panel Thickness:
 .039" ~ .157"
 (1.0mm ~ 4.0mm)

With Large Bezel



P01-12-C-2A

Panel Thickness:
 .039" ~ .157"
 (1.0mm ~ 4.0mm)

Toggles
Rockers
Pushbuttons
Illuminated PB
Programmable
Keylocks
Rotaries
Slides
Tactiles
Tilt
Touch
Indicators
Accessories
Supplement