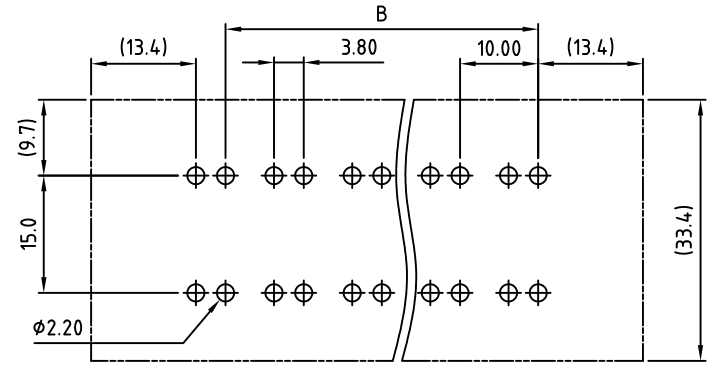
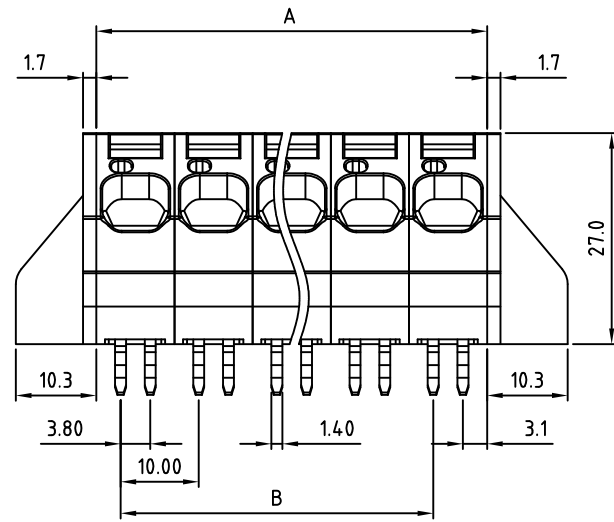
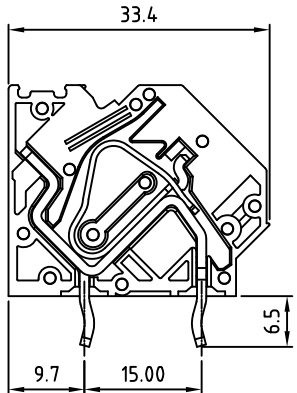


SIGN	DATE	DESCRIPTION	APPROVER
THIS IS CAD DRAWING, DO NOT REVISE MANUALLY!!!			



PCB Layout

- Material:
- Insulator(housing): Thermoplastic (UL94V-0)
  - Wire guard: Stainless steel
  - Terminal Body(contact pin): Copper.Tin platd
  - With flange left cover: Thermoplastic (UL94V-0)
  - With flange right cover: Thermoplastic (UL94V-0)

- Electrical:
- |                          |                        |       |
|--------------------------|------------------------|-------|
|                          | cULus                  | VDE   |
| ● Voltage rating:        | 600V                   | 1000V |
| ● Current rating:        | 37A                    | 76A   |
| ● Wire range:            | 0.2-16 mm <sup>2</sup> |       |
| Solid wire(AWG):         | 6-24                   |       |
| Stranded wire(AWG):      | 6-24                   |       |
| ● Wire strip length:     | 12-13mm                |       |
| ● Withstanding Voltage:  | 2.2KV                  | 3.5KV |
| ● Operating temperature: | -40°C to +115°C        |       |
| ● Soldering temperature: | 250°C±10°C/5 Sec       |       |
| ● Safety Approval:       |                        |       |
- RoHS Compliant

PART NUMBER:

OSTH8XX0081

- |              |                    |
|--------------|--------------------|
| No. of Poles | COLOR              |
| 02 2 Poles   | 0: Black           |
| 03 3 Poles   | 5: Green           |
| ... ..       | 6: Blue            |
| 08 8 Poles   | 8: Grey (Standard) |

THESE DRAWINGS AND SPECIFICATIONS ARE THE PROPERTY OF ON-SHORE TECHNOLOGY, INC. AND SHALL NOT BE REPRODUCED, COPIED OR USED IN ANY MANNER WITHOUT THE PRIOR WRITTEN CONSENT OF ON-SHORE TECHNOLOGY, INC.



TITLE		OSTH8 10.0mm with flange Series	
PART NO.	OSTH8XX0081	DWG NO.	OSTH8XX0081.DWG
APPROVED	CHECKED	DESIGNED	DRAWN
		Aaron 2010.06.08	Aaron 2007.09.14
		Tolerance	
		UNIT: mm	
		SCALE: NONE	
		SHEET: 01/01	
		REV: A	
		X. ±0.50	
		X.X ±0.30	
		X.XX ±0.10	
		X* ±1*	

POLE		2	3	4	5	6	7	8	9	10	11	12
A		20.00	30.00	40.00	50.00	60.00	70.00	80.00	90.00	100.00	110.00	120.00
B		10.00	20.00	30.00	40.00	50.00	60.00	70.00	80.00	90.00	100.00	110.00
Tol.		±0.15					±0.25					
POLE	13	14	15	16	17	18	19	20	21	22	23	24
A	130.00	140.00	150.00	160.00	170.00	180.00	190.00	200.00	210.00	220.00	230.00	240.00
B	120.00	130.00	140.00	150.00	160.00	170.00	180.00	190.00	200.00	210.00	220.00	230.00
Tol.		±0.35					±0.50					