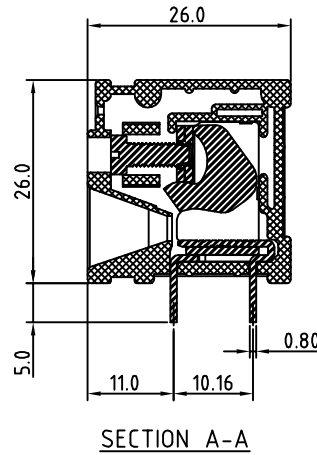
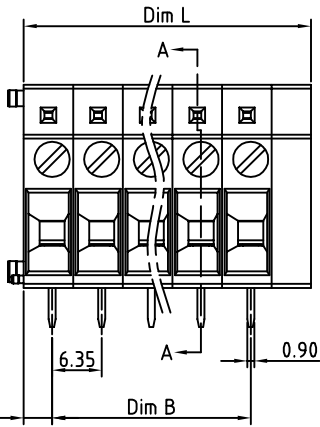
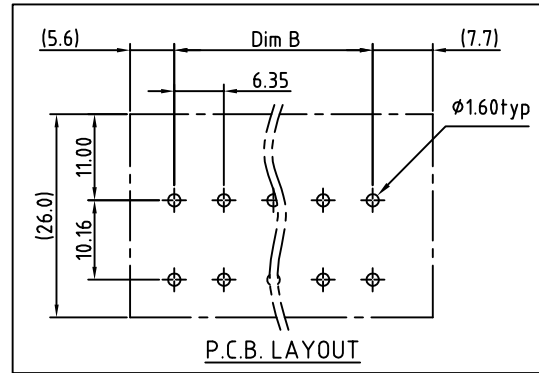
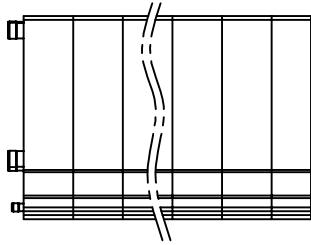


| | | | |
|------|------|--|----------|
| SIGN | DATE | DESCRIPTION | APPROVER |
| | | THIS IS CAD DRAWING, DO NOT REVISE MANUALLY!!! | |



Material

- Insulating body Thermoplastic (UL94V-0)
- Insulating cover Thermoplastic (UL94V-0)
- Terminal screw Steel Zinc plating "-" slot type
- Clamp cage Steel/steel Zinc plated
- Terminal body Steel, Zinc plating
- Solder pin Brass, Tin plated

Electrical

- Voltage rating: 300VAC
- Current rating: 30A
- Wire range:
 - Solid wire(AWG): 10-24
 - Stranded wire(AWG): 10-24
- Torque(Lb-In): 4.3
- Screw: M3
- Wire strip length: 15-16mm
- Withstanding Voltage: 1.6KV
- Operating temperature: -30°C to +105°C
- Soldering temperature: 250°C±10°C/5 Sec

RoHS Compliant

PART NUMBER:

OSTKHXX0551

| | |
|---|--|
| No. of Poles 02 2 Poles 03 3 Poles 16 16 Poles | COLOR 0: Black 5: Green (Standard) 6: Blue 8: Grey |
|---|--|

| Poles | 01 | 02 | 03 | 04 | 05 | 06 | 07 | 08 |
|-------|-------|-------|-------|-------|-------|-------|--------|--------|
| Dim L | 11.35 | 17.70 | 24.05 | 30.40 | 36.75 | 43.10 | 49.45 | 55.80 |
| Dim B | | 6.35 | 12.70 | 19.05 | 25.40 | 31.75 | 38.10 | 44.45 |
| TOL | ±0.15 | | | | ±0.20 | | | |
| Poles | 09 | 10 | 11 | 12 | 13 | 14 | 15 | 16 |
| Dim L | 62.15 | 68.50 | 74.85 | 81.20 | 87.55 | 93.90 | 100.25 | 106.60 |
| Dim B | 50.80 | 57.15 | 63.50 | 69.85 | 76.20 | 82.55 | 88.90 | 95.25 |
| TOL | ±0.25 | | | | ±0.30 | | | |

THESE DRAWINGS AND SPECIFICATIONS ARE THE PROPERTY OF ON-SHORE TECHNOLOGY, INC. AND SHALL NOT BE REPRODUCED, COPIED OR USED IN ANY MANNER WITHOUT THE PRIOR WRITTEN CONSENT OF ON-SHORE TECHNOLOGY, INC.



| | | | | | | | |
|----------|--|--|---------------------|---------------------|--------------|-----------------|---|
| TITLE | | OSTKH 6.35 Series 180Degree Wire inlet | | | | | |
| PART NO. | | OSTKHXX0551 | | DWG NO. | | OSTKHXX0551.DWG | |
| APPROVED | | CHECKED | DESIGNED | DRAWN | CUST NO. | | Tolerance |
| | | | Aaron 2007.12.04 | Aaron 2007.12.04 | | | X. ±0.50 X.X ±0.30 X.XX ±0.10 X° ±1° |
| | | | | | SHEET: 01/01 | | UNIT: mm SCALE: NONE REV.: A1 |