

SIGN	DATE	DESCRIPTION	APPROVER

THIS IS CAD DRAWING, DO NOT REVISE MANUALLY!!!

- Material:
- Solid PIN: Brass(CuZn)
  - Surface of solder tail: Tin plated
  - Insulator(housing): Thermoplastic (UL94V-0)

- Electrical:
- |                          |                  |       |       |       |
|--------------------------|------------------|-------|-------|-------|
|                          | UL               | CSA   | VDE   | TUV   |
| ● Voltage rating:        | 300V             | 300V  | 300V  | 300V  |
| ● Current rating:        | 10A              | 10A   | 12A   | 15A   |
| ● Withstanding Voltage:  | 1.6KV            | 1.6KV | 2.5KV | 2.5KV |
| ● Operating temperature: | -30°C to +105°C  |       |       |       |
| ● Soldering temperature: | 250°C±10°C/5 Sec |       |       |       |
| ● Safety Approval:       |                  |       |       |       |

RoHS Compliant

PART NUMBER:

**OSTOPXX0000**

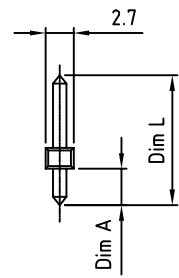
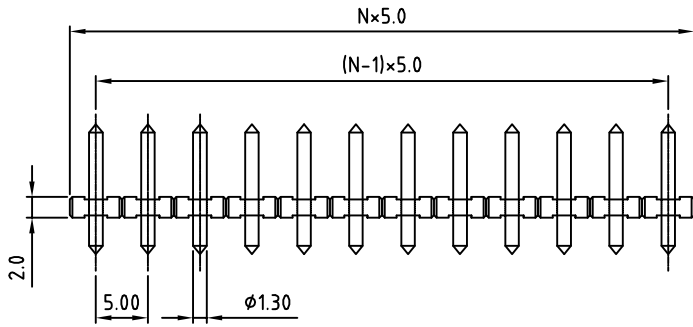
No. of Poles  
 02: Poles  
 ... ..  
 24: Poles

- Dim L Length
- 0 12.5mm (ø1.3 - (Dim A = 3.5) - STANDARD
  - 1 13.0mm (Upø1.3 Downø1.0) (Dim A = 4.3)
  - 2 12.5mm(Upø1.3 Downø1.0) (Dim A = 3.5)
  - 3 11.5mm(ø1.3) (Dim A = 1.9)
  - 4 14.2mm(ø1.3) (Dim A = 2.9)
  - 5 17.5mm(ø1.3) (Dim A = 3.5)
  - 6 20.0mm(ø1.3) (Dim A = 3.5)
  - 7 18.0mm(Upø1.3 Downø1.0) (Dim A = 3.5)
  - 8 16.2mm(Upø1.3 Downø1.0) (Dim A = 3.5)
  - 9 16.5mm(ø1.3) (Dim A = 3.5)
  - A 21.0mm(ø1.1) (Dim A = 4.4)
  - C 12.7mm(ø1.1) (Dim A = 4.4)
  - D 16.3mm(ø1.1) (Dim A = 4.4)
  - F 12.5×8.8mm Bent pin (ø1.3)
  - G 17.9mm(ø1.1) (Dim A = 4.4)
  - H 25.5mm(ø1.3) (Dim A = 3.5)
  - J 13.0mm pin (ø1.3) (Dim A = 3.5)
  - K 12.0mm(UPø1.3 DOWN ø1.0) Round Pin
  - M 11.8mm(ø1.1) (Dim A = 4.0)

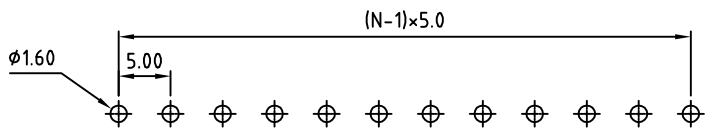
non-standard may require MOQ



N = Number of contact



P.C.B. LAYOUT



THESE DRAWINGS AND SPECIFICATIONS ARE THE PROPERTY OF ON-SHORE TECHNOLOGY, INC. AND SHALL NOT BE REPRODUCED, COPIED OR USED IN ANY MANNER WITHOUT THE PRIOR WRITTEN CONSENT OF ON-SHORE TECHNOLOGY, INC.



TITLE		OSTOP 5.0mm Series 2p-24p				
PART NO.	OSTOPXX0000	DWG NO.	OSTOPXX0000.DWG			
APPROVED	CHECKED	DESIGNED	DRAWN	CUST NO.	Tolerance	
Shi Jun 2006.10.30	Shi Jun 2006.10.30	Tony 2006.10.30	Tony 2006.10.30		X. ±0.50	
					UNIT: mm	X.X ±0.30
				SHEET: 01/01	SCALE: NONE	X.XX ±0.10
				REV.: E	X° ±1°	