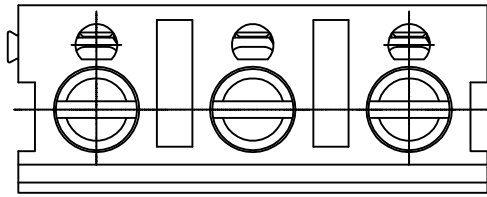


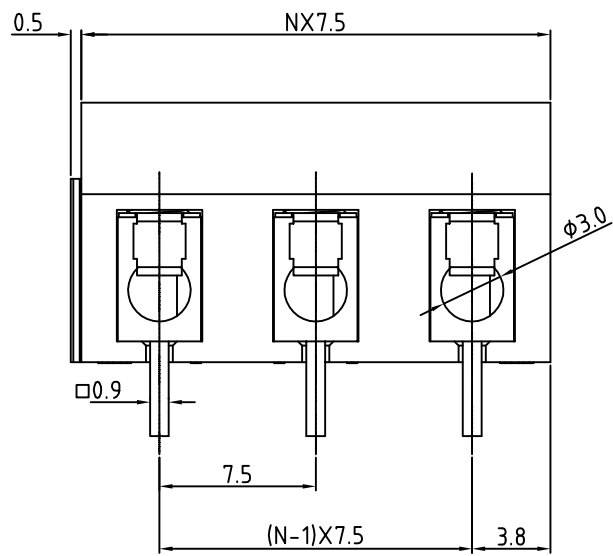
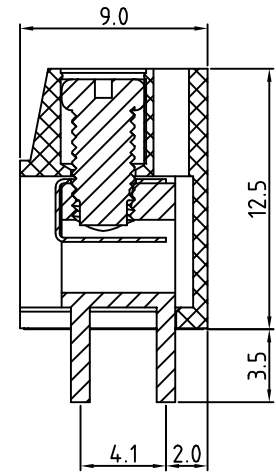
SIGN	DATE	DESCRIPTION	APPROVER

THIS IS CAD DRAWING, DO NOT REVISE MANUALLY!!!



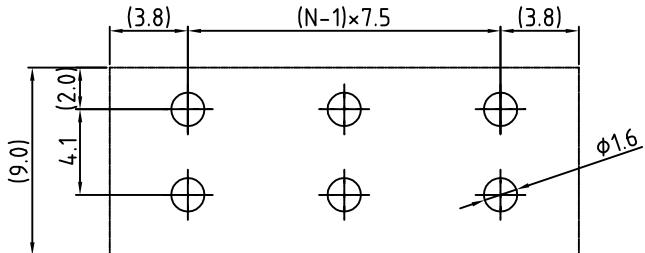
- Material**
- Terminal body
  - (metal housing): Brass(CuZn)
  - Terminal screw: Steel Zinc plating "-" slot type
  - Wire guard: Stainless steel
  - Surface of solder tail: Tin plated
  - Insulator (housing): Thermoplastic (UL94V-0)

- Electrical cULus**
- Voltage rating: 300VAC
  - Current rating: 15A
  - Wire range:
    - Solid wire(AWG): 14-22
    - Stranded wire(AWG): 14-22
  - Torque(Lb-in): 3.5
  - Screw: M3
  - Wire strip length: 6-7mm
  - Withstanding Voltage: 2KV
  - Operating temperature: -30°C to +105°C
  - Soldering temperature: 250°C±10°C/5 Sec
  - Safety approval: cULus
- RoHS Compliant



N=Number of poles

P.C.B. LAYOUT



PART NUMBER:

OSTVAXX2160

No. of Poles	COLOR
02 2 Poles	0: Black
03 3 Poles	5: Green
...	6: Blue (Standard)
12 12 Poles	8: Grey



THESE DRAWINGS AND SPECIFICATIONS ARE THE PROPERTY OF ON-SHORE TECHNOLOGY, INC. AND SHALL NOT BE REPRODUCED, COPIED OR USED IN ANY MANNER WITHOUT THE PRIOR WRITTEN CONSENT OF ON-SHORE TECHNOLOGY, INC.

TITLE		OSTVA -7.5mm Series		DWG NO.		OSTVAXX2160.DWG	
PART NO.		OSTVAXX2160		DWG NO.		OSTVAXX2160.DWG	
APPROVED	CHECKED	DESIGNED	DRAWN	CUST NO.	Tolerance		
Shi Jun 2006.10.19	Shi Jun 2006.10.19	xionghaitao 2006.10.19	xionghaitao 2006.10.19		UNIT: mm	X.	±0.50
				SHEET: 01/01	SCALE: NONE	X.X	±0.30
				REV: D		X.XX	±0.10
						X°	±1°