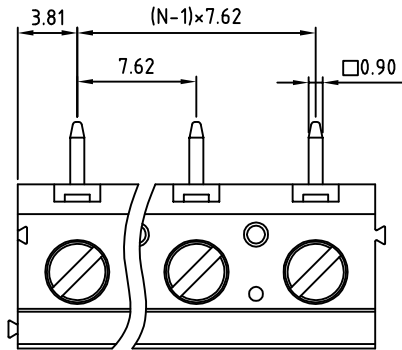
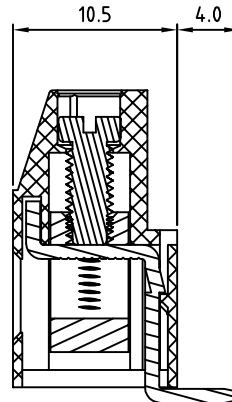
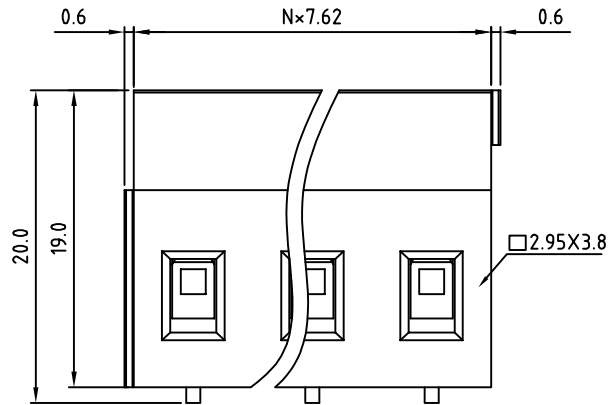


| SIGN | DATE | DESCRIPTION   | APPROVER |
|------|------|---|----------|
|      |      | <i>THIS IS CAD DRAWING, DO NOT REVISE MANUALLY!!!</i> |          |



- Material**
- Terminal body
  - (metal housing): Brass(CuZn)
  - Terminal screw: Steel Zinc plating "-" slot type
  - Contacts: Brass
  - Surface of solder tail: Tin plated
  - Insulator (housing): Thermoplastic (UL94V-0)

- Electrical**
- Voltage rating: 300VAC
  - Current rating: 20A
  - Solid wire(AWG): 12-30
  - Stranded wire(AWG): 12-30
  - Torque(Lb-In): 3.5
  - Screw: M3
  - Wire strip length: 6-7mm
  - Withstanding Voltage: 1.6KV
  - Operating temperature: -30°C to +105°C
  - Soldering temperature: 250°C±10°C/5 Sec
  - Safety Approval: us



RoHS Compliant

PART NUMBER

**OSTVJXX6150**

No. of Poles

02 2 Poles

03 3 Poles

... ..

12 12 Poles

COLOR:

0: Black

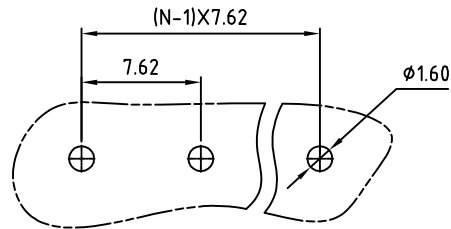
5: Green (Standard)

6: Blue

8: Grey

N=Number of poles

P.C.B LAYOUT



THESE DRAWINGS AND SPECIFICATIONS ARE THE PROPERTY OF ON-SHORE TECHNOLOGY, INC. AND SHALL NOT BE REPRODUCED, COPIED OR USED IN ANY MANNER WITHOUT THE PRIOR WRITTEN CONSENT OF ON-SHORE TECHNOLOGY, INC.



| TITLE      |  |             |            |              |          |                 |             | OSTVJ-7.62mm series vertical (90D wire inlet) |       |
|------------|--|-------------|------------|--------------|----------|-----------------|-------------|---|-------|
| PART NO.   |  | OSTVJXX6150 |            | DWG NO.      |          | OSTVJXX6150.DWG |             |   |       |
| APPROVED   |  | CHECKED     | DESIGNED   | DRAWN        | CUST NO. |                 | Tolerance   |   |       |
| Shi Jun    |  | Marvin      | Marvin     | Marvin       |          |                 | UNIT: mm    | X.  | ±0.50 |
| 2006.10.20 |  | 2006.10.20  | 2006.10.20 | 2006.10.20   |          |                 | SCALE: NONE | X.X   | ±0.30 |
|            |  |             |            | SHEET: 01/01 |          | REV: D          | X.XX        | ±0.10   |       |
|            |  |             |            |              |          |                 | X°          | ±1°   |       |