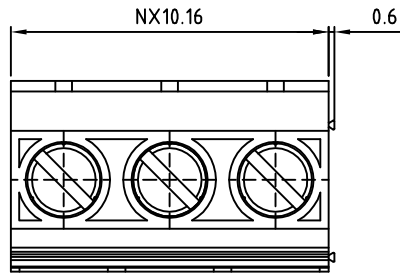


SIGN	DATE	DESCRIPTION	APPROVER
		<i>THIS IS CAD DRAWING, DO NOT REVISE MANUALLY!!!</i>	



- Material**
- Terminal body (metal housing) : Steel stamping
  - Terminal screw : Steel Zinc plating "-" slot type
  - Contacts : Brass
  - Surface of solder tail : Tin plated
  - Insulator (housing) : Thermoplastic (UL94V-0)

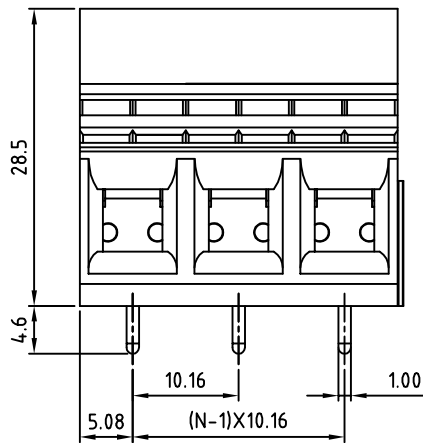
- Electrical**
- Voltage rating : 300V
  - Current rating : 57A
  - Wire range :  
Solid wire (AWG) : 8-22  
Stranded wire (AWG) : 8-22
  - Torque (LB-In.) : 19
  - Screw : M4
  - Wire strip length : 10-11mm
  - Withstanding voltage : 1.6KV
  - Operating temperature : -30°C+105°C
  - Soldering temperature : 250°C+10°C/5 Sec
  - Safety Approval : US

RoHS Compliant

PART NUMBER:

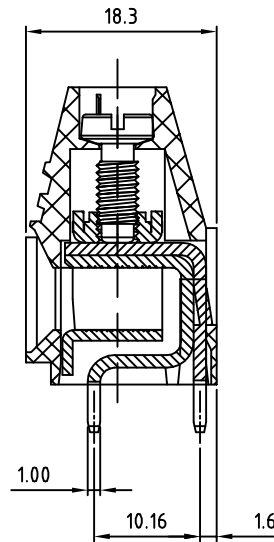
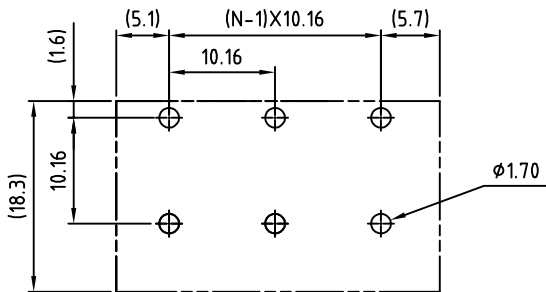
**OSTVPPX6584**

No. of Poles	COLOR
02 2 Poles	0: Black
03 3 Poles	5: Green
... ..	6: Blue
12 12 Poles	8: Grey (Standard)



N=Number of poles

P.C.B LAYOUT



THESE DRAWINGS AND SPECIFICATIONS ARE THE PROPERTY OF ON-SHORE TECHNOLOGY, INC. AND SHALL NOT BE REPRODUCED, COPIED OR USED IN ANY MANNER WITHOUT THE PRIOR WRITTEN CONSENT OF ON-SHORE TECHNOLOGY, INC.



TITLE		OSTVP 10.16 Series (Single contact) with steel stamping					
PART NO.	OSTVPPX6584	DWG NO.		OSTVPPX6584.DWG			
APPROVED	CHECKED	DESIGNED	DRAWN	CUST NO.	Tolerance		
Shi Jun 2006.10.23	Marvin 2006.10.23	Marvin 2006.10.23	Marvin 2006.10.23		UNIT: mm	X.	±0.50
					SCALE: NONE	X.X	±0.30
				SHEET: 01/01	REV: G	X.XX	±0.10
						X°	±1°