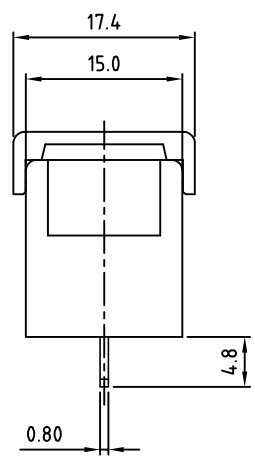
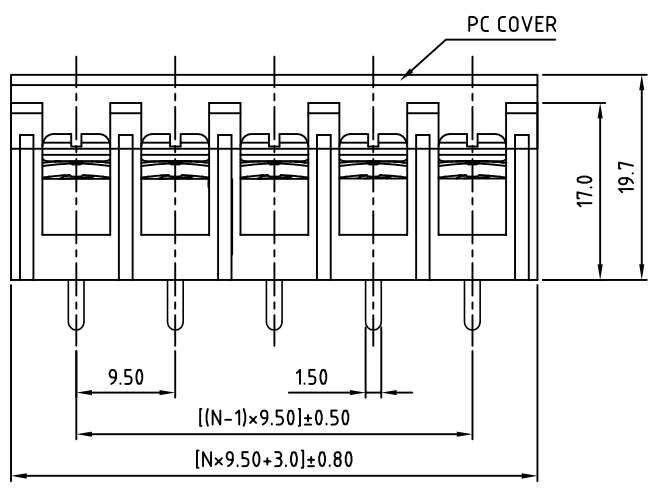
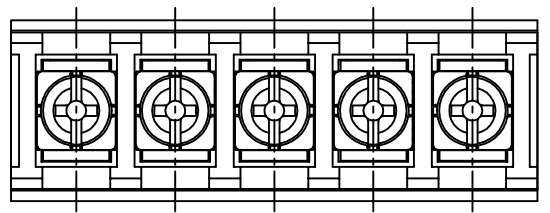


SIGN	DATE	DESCRIPTION	APPROVER

*THIS IS CAD DRAWING, DO NOT REVISE MANUALLY!!!*



**SPECIFICATIONS**

VOLTAGE & CURRENT: 300 V, 20 A

WITHSTANDING VOLTAGE: AC 2000 V/Min

INSULATION RESISTANCE: 1000 MΩ OR MORE AT DC 500 V

TEMPERATURE RANGE: -40 °C ± 105 °C

SCREW TORQUE VALUE: 12 Lb-In.

WIRE RANGE: 22 - 12AWG

1) MOLDED PARTS: THERMOPLASTIC, UL 94 V-0 BLACK

2) TERMINAL: BRASS, 0.8t, Tin PLATED

3) TERMINAL SCREWS: STEEL, Ni PLATED, M3.5

4) COVER MATERIAL: PC

APPROVAL: us

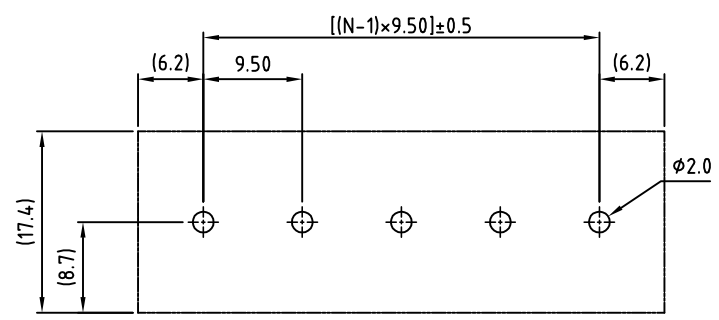
RoHS Compliant

PART NUMBER: **OSTYK501XX230**

NO. OF POLES

- 02: 2 POLES
- 03: 3 POLES
- 04: 4 POLES
- :
- 30: 30 POLES

N=Number of poles



P.C.B LAYOUT

THESE DRAWINGS AND SPECIFICATIONS ARE THE PROPERTY OF ON-SHORE TECHNOLOGY, INC. AND SHALL NOT BE REPRODUCED, COPIED OR USED IN ANY MANNER WITHOUT THE PRIOR WRITTEN CONSENT OF ON-SHORE TECHNOLOGY, INC.

**ON-SHORE TECHNOLOGY, INC.**

TITLE		OSTYK-501 W/O Flange&With Cover Series				
PART NO.	OSTYK501XX230	DWG NO.	OSTYK501XX230.DWG			
APPROVED	CHECKED	DESIGNED	DRAWN	CUST NO.	Tolerance	
Shi Jun 2007.07.18	Seamus 2007.07.18	LUCY 2007.7.18	LUCY 2007.7.18	 	X. ±0.50	
					UNIT: mm	X.X ±0.30
				SHEET: 01/01	SCALE: NONE	X.XX ±0.10
				REV.: B	X° ±1°	