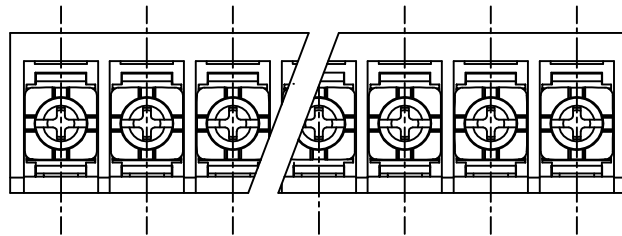


| SIGN | DATE | DESCRIPTION | APPROVER |
|------|------|-------------|----------|
| | | | |
| | | | |
| | | | |

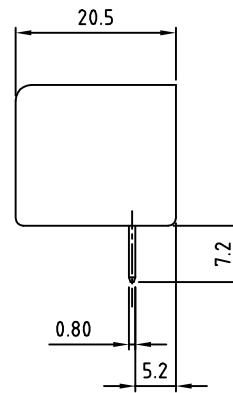
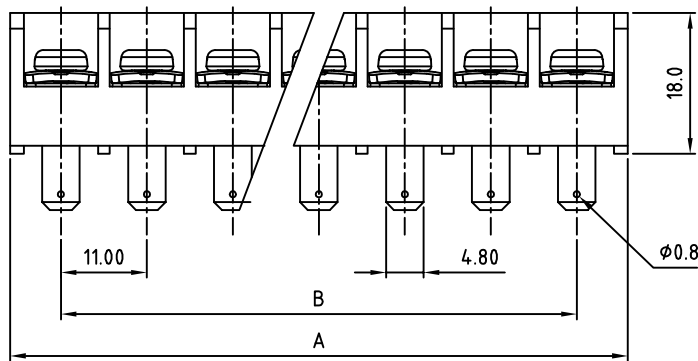
THIS IS CAD DRAWING, DO NOT REVISE MANUALLY!!!



SPECIFICATIONS
VOLTAGE & CURRENT: 300 V, 30 A
WITHSTANDING VOLTAGE: AC 2000 V/Min
INSULATION RESISTANCE: 1000 MΩ OR MORE AT DC 500 V
TEMPERATURE RANGE: -40 °C ~+105 °C
SCREW TORQUE VALUE: 9.5 Lb-In.
WIRE RANGE: 22 - 10 (str/sol) AWG
1) MOLDED PARTS: THERMOPLASTIC, UL 94 V-0 BLACK
2) TERMINAL: BRASS, 0.8t, Tin PLATED
3) TERMINAL SCREWS: STEEL, Ni PLATED, M4

● Safety Approval: us

RoHS Compliant



OSTYK552XX030

NO. OF POLES
 02: 2 POLES
 03: 3 POLES
 04: 4 POLES
 ⋮
 20: 20 POLES

| POLE | 2 | 3 | 4 | 5 | 6 | 7 | 8 | 9 | 10 | 11 | 12 | 13 | 14 | 15 | 16 | |
|------|-------|-------|-------|-------|-------|-------|-------|-------|-------|-------|-------|-------|-------|-------|-------|--|
| A | 24.00 | 35.00 | 46.00 | 57.00 | 68.00 | 79.00 | 90.00 | 101.0 | 112.0 | 123.0 | 134.0 | 145.0 | 156.0 | 167.0 | 178.0 | |
| B | 11.00 | 22.00 | 33.00 | 44.00 | 55.00 | 66.00 | 77.00 | 88.00 | 99.00 | 110.0 | 121.0 | 132.0 | 143.0 | 154.0 | 165.0 | |
| TOL | ±0.30 | | | ±0.40 | | | | ±0.50 | | | | | | | | |

| POLE | 17 | 18 | 19 | 20 |
|------|-------|-------|-------|-------|
| A | 189.0 | 200.0 | 211.0 | 222.0 |
| B | 176.0 | 187.0 | 198.0 | 209.0 |
| TOL | ±0.60 | | | |

THESE DRAWINGS AND SPECIFICATIONS ARE THE PROPERTY OF ON-SHORE TECHNOLOGY, INC. AND SHALL NOT BE REPRODUCED, COPIED OR USED IN ANY MANNER WITHOUT THE PRIOR WRITTEN CONSENT OF ON-SHORE TECHNOLOGY, INC.



| | | | | | |
|-----------------------|----------------------|-------------------|-------------------|--------------|-------------------|
| TITLE | | OSTYK-552 Series | | | |
| PART NO. | | OSTYK552XX030 | | DWG NO. | OSTYK552XX030.DWG |
| APPROVED | CHECKED | DESIGNED | DRAWN | CUST NO. | |
| Shi Jun 2007.07.18 | Seamus 2007.07.18 | LUCY 2007.7.18 | LUCY 2007.7.18 | | |
| | | | | | UNIT: mm |
| | | | | | SCALE: NONE |
| | | | | SHEET: 01/01 | REV.: B |
| | | | | Tolerance | |
| | | | | X. | ±0.50 |
| | | | | X.X | ±0.30 |
| | | | | X.XX | ±0.10 |
| | | | | X° | ±1° |