

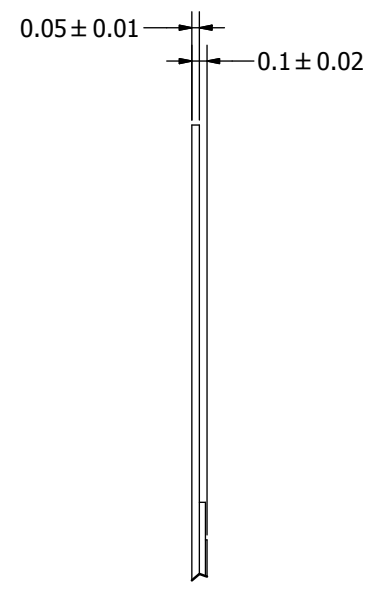
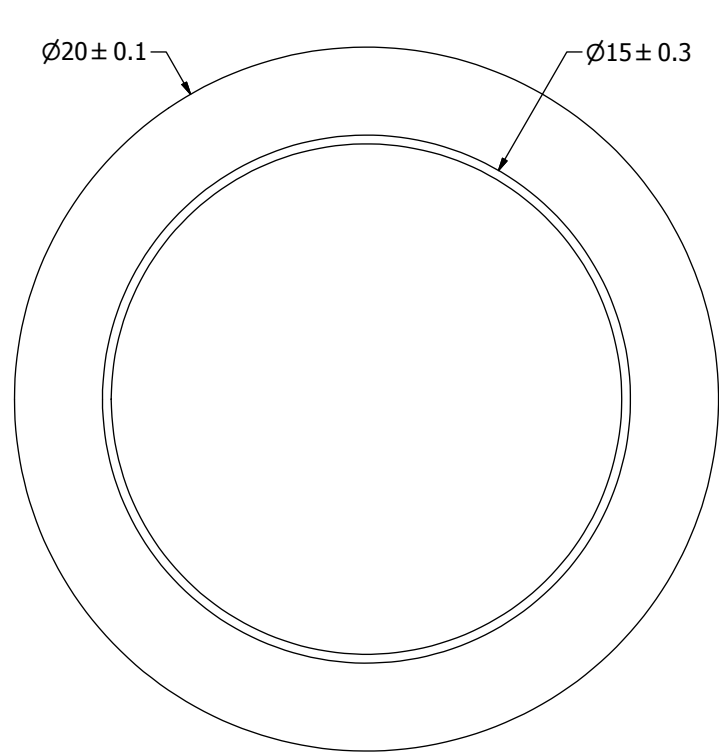
SPECIFICATIONS

| PARAMETERS | VALUES | UNITS |
|--------------------------|-------------|-------|
| RESONANT FREQUENCY | 2,000 ± 300 | Hz |
| RESONANT IMPEDANCE (MAX) | 500 | Ohm |
| MAX INPUT VOLTAGE | 30 | Vp-p |
| CAPACITANCE @ 1kHz | 90,000 ±30% | pF |
| PLATE MATERIAL | BRASS | - |
| OPERATING TEMPERATURE | -20 ~ +60 | °C |
| STORAGE TEMPERATURE | -20 ~ +70 | °C |

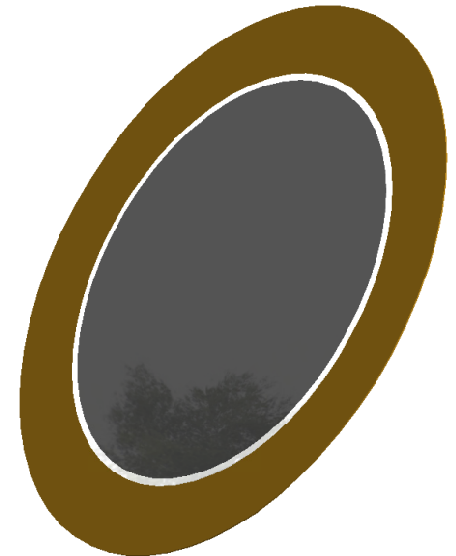
THIS DOCUMENT CONTAINS DATA PROPRIETARY TO PROJECTS UNLIMITED, INC. ANY USE OR REPRODUCTION, IN ANY FORM, WITHOUT PRIOR WRITTEN PERMISSION OF PROJECTS UNLIMITED, INC. IS PROHIBITED.
©2003, Projects Unlimited Inc.

REVISION HISTORY

| LTR | DESCRIPTION | DATE | APPROVED |
|-----|--|-----------|----------|
| - | RELEASED FROM ENGINEERING | 2/23/2006 | |
| A | REVISED TO INVENTOR 3-D DRAWING TEMPLATE | 8/10/2010 | B.R. |



A (30 : 1)



NOTES:

1. ALL DIMENSIONS ARE IN MILLIMETERS.
2. SPECIFICATIONS SUBJECT TO CHANGE OR WITHDRAWAL WITHOUT NOTICE.
3. THIS PART IS RoHS 2002/95/EC COMPLIANT.

| | | | | | | | | | |
|--|------|-------------|-----------|------------|--------------------|-------------|-----------|------------|--|
| UNLESS OTHERWISE SPECIFIED: DIMENSIONS ARE IN MILLIMETERS, TOLERANCES ARE ±0.5 AND ANGLES ARE ±3°. | SIZE | Designed by | Date | Checked by | Date | Approved by | Date | Drawn Date | |
| | A3 | J.A.F. | 2/23/2006 | B.R. | 2/24/2006 | E.P. | 2/24/2006 | 8/10/2010 | |
| AB2020B-2.idw | | | | | <h2>AB2020B-2</h2> | | | | |
| | | | | | | | | Bender | |
| | | | | - | | 1 / 1 | | | |