

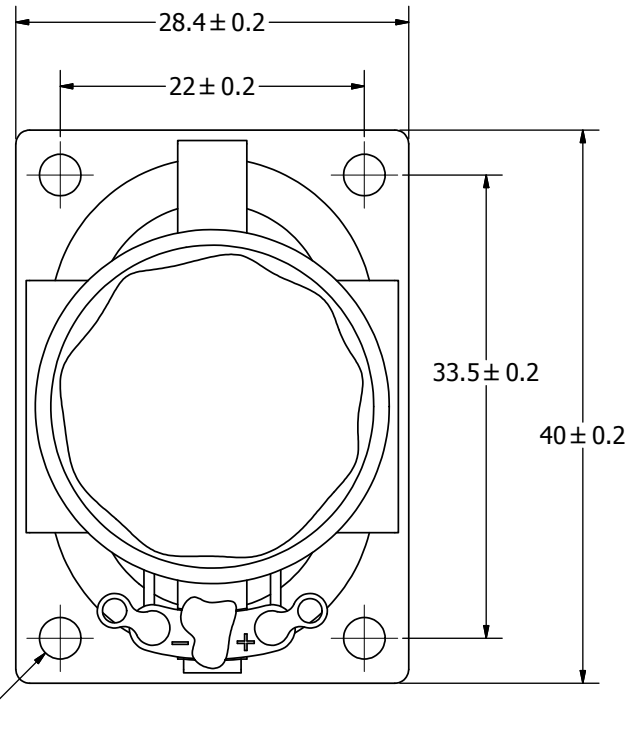
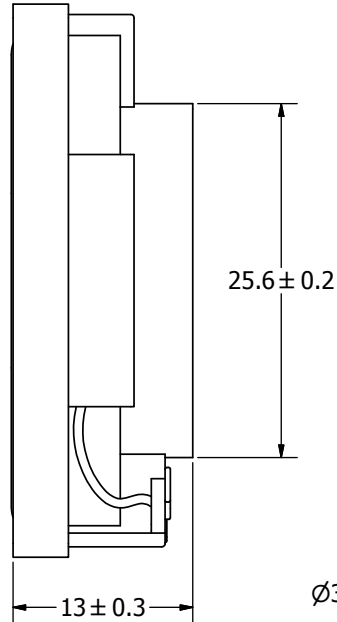
## SPECIFICATIONS

| PARAMETERS   | VALUES       | UNITS |
|--|--------------|-------|
| RATED INPUT POWER                                    | 2            | W     |
| MAX INPUT POWER                                      | 4            | W     |
| IMPEDANCE  | 4 ± 15%      | OHM   |
| OUTPUT SPL @ 1W/0.5M<br>(AT 0.8, 1.0, 1.2, 1.5, kHz) | 86 ± 3       | dBA   |
| DISTORTION (MAX.)                                    | 5%           | -     |
| RESONANT FREQUENCY                                   | 370 ± 20%    | Hz    |
| FREQUENCY RANGE                                      | 200 ~ 20,000 | Hz    |
| HOUSING MATERIAL                                     | ABS          | -     |
| CONE MATERIAL  | PAPER        | -     |
| MAGNET MATERIAL                                      | Nd-Fe-B      | -     |
| OPERATING TEMPERATURE                                | -40 ~ +80    | °C    |
| WEIGHT   | 16.5         | grams |

THIS DOCUMENT CONTAINS DATA PROPRIETARY TO PROJECTS UNLIMITED, INC. ANY USE OR REPRODUCTION, IN ANY FORM, WITHOUT PRIOR WRITTEN PERMISSION OF PROJECTS UNLIMITED, INC. IS PROHIBITED.  
©2003, Projects Unlimited Inc.

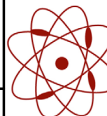
## REVISION HISTORY

| LTR | DESCRIPTION                               | DATE       | APPROVED |
|-----|---|------------|----------|
| -   | RELEASED FROM ENGINEERING                 | 12/7/2005  |          |
| A   | ADDED MOUNTING HOLE DIMENSION             | 12/18/2007 | R.W.     |
| B   | REVISED MAX. INPUT POWER                  | 7/18/2008  | B.R.     |
| C   | REVISED OPERATING TEMPERATURE             | 10/14/2008 | C.W.     |
| D   | REVISED TO INVENTOR 3-D DRAWING TEMPLATE  | 11/8/2008  | B.R.     |
| E   | REVEISED SPL & TEMPERATURE SPECIFICATIONS | 8/15/2012  | M.L.     |
| F   | REVISED TEMPERATURE SPECIFICATION         | 8/21/2012  | M.L.     |



### NOTES:

1. ALL DIMENSIONS ARE IN MILLIMETERS.
2. SPECIFICATIONS SUBJECT TO CHANGE OR WITHDRAWAL WITHOUT NOTICE.
3. THIS PART IS RoHS 2002/95/EC COMPLIANT.

|  |                   |   |           |            |                    |             |           |            |
|--|-------------------|---|-----------|------------|--------------------|-------------|-----------|------------|
| UNLESS OTHERWISE SPECIFIED:<br>DIMENSIONS ARE IN MILLIMETERS,<br>TOLERANCES ARE ±0.5 AND ANGLES ARE ±3°. | SIZE<br><b>A3</b> | Designed by   | Date      | Checked by | Date               | Approved by | Date      | Drawn Date |
|  |                   | J.A.F.  | 12/6/2005 | B.R.       | 12/7/2005          | E.P.        | 12/7/2005 | 11/8/2008  |
| AS04004PO-R.idw  |                   |  <b>pui audio</b><br><small>a projects unlimited company</small> |           |            | <b>AS04004PO-R</b> |             |           |            |
|  |                   | <b>Speaker</b>  |           |            | Edition            | Sheet       |           |            |
|  |                   |   |           |            | -                  | 1 / 1       |           |            |