

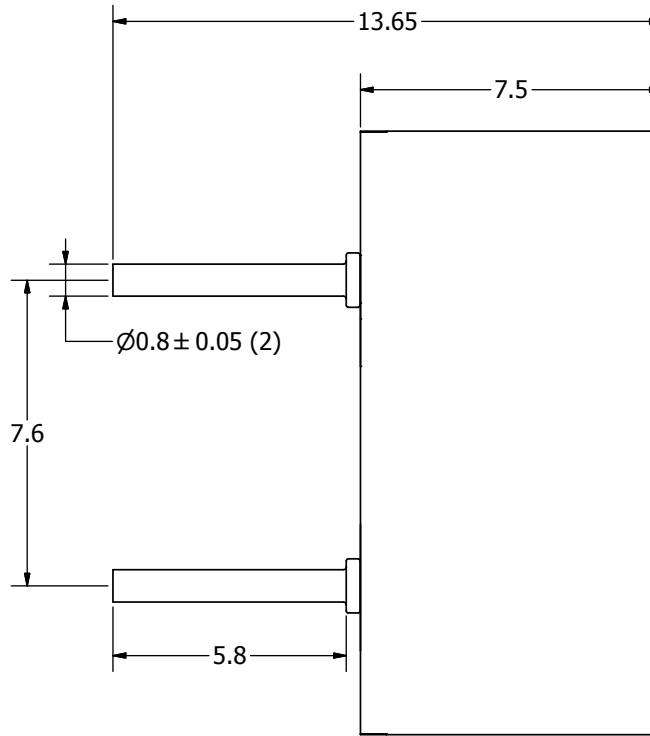
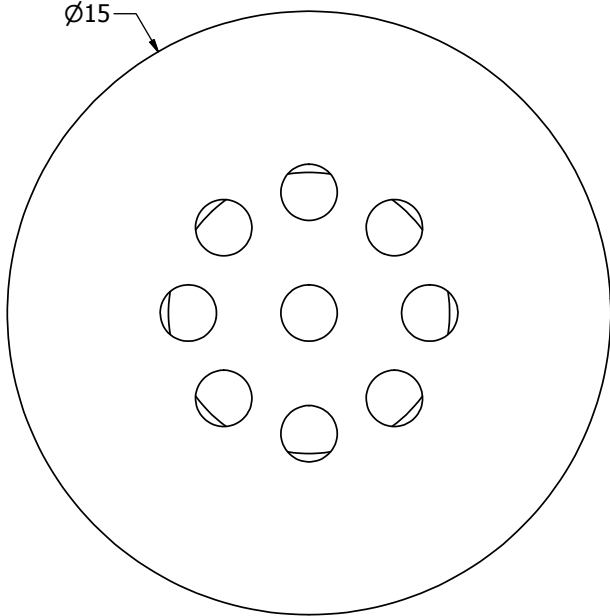
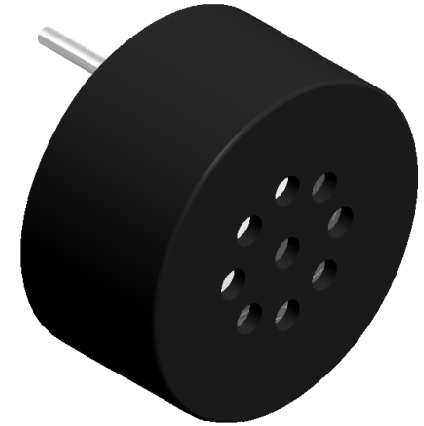
SPECIFICATIONS

| PARAMETERS | VALUES | UNITS |
|---|----------------|-------|
| RATED INPUT POWER | 0.3 | W |
| MAX INPUT POWER | 0.5 | W |
| IMPEDANCE | 8 ± 15% | OHM |
| OUTPUT SPL @ 0.3W/0.1M (AT 2.0, 2.5, 3.0, 4.0 kHz) | 87 ± 3 | dBA |
| DISTORTION (MAX.) | 5% | - |
| RESONANT FREQUENCY | 1,700 ± 20% | Hz |
| FREQUENCY RANGE | 1,700 ~ 20,000 | Hz |
| HOUSING MATERIAL | ABS | - |
| CONE MATERIAL | MYLAR | - |
| MAGNET MATERIAL | Nd-Fe-B | - |
| OPERATING TEMPERATURE | -20 ~ +55 | °C |
| WEIGHT | 1.83 | grams |

THIS DOCUMENT CONTAINS DATA PROPRIETARY TO PROJECTS UNLIMITED, INC. ANY USE OR REPRODUCTION, IN ANY FORM, WITHOUT PRIOR WRITTEN PERMISSION OF PROJECTS UNLIMITED, INC. IS PROHIBITED.
©2003, Projects Unlimited Inc.

REVISION HISTORY

| LTR | DESCRIPTION | DATE | APPROVED |
|-----|--|------------|----------|
| - | RELEASED FROM ENGINEERING | 12/31/2007 | |
| A | ADDED OVERALL HEIGHT DIMENSION | 2/23/2009 | B.R. |
| B | REVISED TO INVENTOR 3-D DRAWING TEMPLATE | 2/24/2009 | B.R. |
| C | REVISED WEIGHT OF PART | 6/8/2010 | B.R. |
| D | REVISED HOUSING MATERIAL | 7/27/2010 | B.R. |



NOTES:

1. ALL DIMENSIONS ARE IN MILLIMETERS.
2. SPECIFICATIONS SUBJECT TO CHANGE OR WITHDRAWAL WITHOUT NOTICE.
3. THIS PART IS RoHS 2002/95/EC COMPLIANT.

| | | | | | | | | |
|--|-------------------|---|-----------|--|-----------|-------------|-----------|------------|
| UNLESS OTHERWISE SPECIFIED: DIMENSIONS ARE IN MILLIMETERS, TOLERANCES ARE ±0.5 AND ANGLES ARE ±3°. | SIZE A3 | Designed by | Date | Checked by | Date | Approved by | Date | Drawn Date |
| | | J.A.F. | 12/8/2005 | B.R. | 12/8/2005 | E.P. | 12/8/2005 | 2/24/2009 |
| | |  pui audio <small>a projects unlimited company</small> | | AST-01508MR-R Speaker | | | Edition | Sheet |
| AST-01508MR-R.idw | | | | | - | 1 / 1 | | |