

# PART NUMBER CONFIGURATION

**PS K - 1 XXXX A A - 25**

PAL-STRIP

INSULATION MATERIAL

K = KAPTON

P = POLYESTER

- = Non RoHS

R = RoHS

CONDUCTOR PITCH

1 = 1.00MM (.039")

2 = 1.25MM (.049")

3 = 1.27MM (.050")

4 = 1.90MM (.075")

5 = 2.00MM (.079")

6 = 2.54MM (.100")

7 = 3.18MM (.125")

8 = 3.81MM (.150")

9 = 5.08MM (.200")

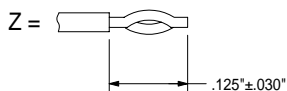
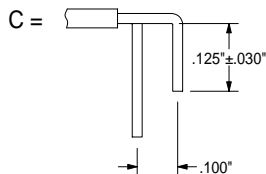
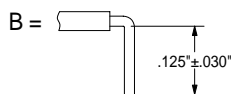
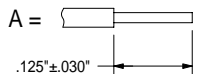
INSULATION LENGTH IN MM

( 12.7MM MIN. ) ( 4 DIGITS MAX )

NUMBER OF CONDUCTORS  
( 75 COND. MAX. )

PIN ARRANGEMENT  
( RIGHT END )

PIN ARRANGEMENT  
( LEFT END )



NOTE: SOME CONFIGURATIONS MAY REQUIRE TOOLING CHARGES WHEN ORDERED

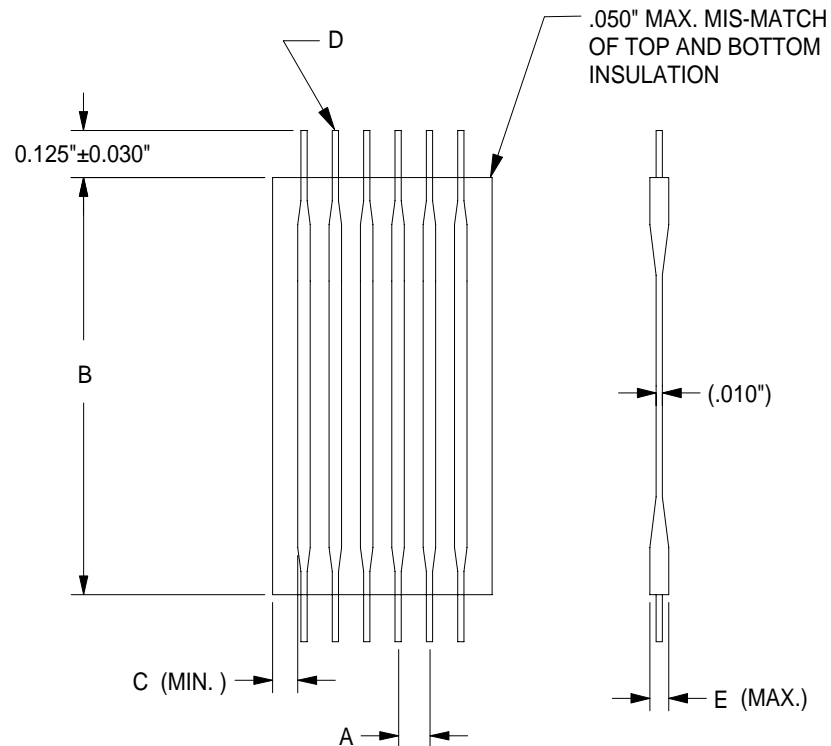
| INSULATION LENGTH B | TOLERANCE         |
|---------------------|-------------------|
| 0.00-3.00"          | ±0.075" (1.905MM) |
| 3.00-6.00"          | ±0.100" (2.540MM) |
| 6.00-12.00"         | ±0.125" (3.175MM) |
| 12.00-18.00"        | ±0.150" (3.810MM) |
| 18.00-24.00"        | ±0.200" (5.080MM) |
| 24.00-36.00"        | ±0.250" (6.350MM) |
| OVER 36.00"         | ±1% OF LENGTH     |

| PITCH A ±0.010" * | MARGIN C      | WIRE GAUGE | PIN DIA. D      | (PIN END) E   | # OF COND. MIN.-MAX. |
|-------------------|---------------|------------|-----------------|---------------|----------------------|
| 1.00MM (.039")    | .25MM (.010") | 28         | .320MM (.0126") | .64MM (.025") | 2-75                 |
| 1.25MM (.049")    | .25MM (.010") | 28         | .320MM (.0126") | .64MM (.025") | 2-75                 |
| 1.27MM (.050")    | .25MM (.010") | 28         | .320MM (.0126") | .64MM (.025") | 2-75                 |
| 1.90MM (.075")    | .25MM (.010") | 28         | .320MM (.0126") | .64MM (.025") | 2-60                 |
| 2.00MM (.079")    | .25MM (.010") | 26         | .404MM (.0159") | .84MM (.033") | 2-60                 |
| 2.54MM (.100")    | .25MM (.010") | 26         | .404MM (.0159") | .84MM (.033") | 2-50                 |
| 3.18MM (.125")    | .51MM (.020") | 24         | .511MM (.0201") | .84MM (.033") | 2-35                 |
| 3.81MM (.150")    | .51MM (.020") | 24         | .511MM (.0201") | .84MM (.033") | 2-30                 |
| 5.08MM (.200")    | .51MM (.020") | 24         | .511MM (.0201") | .84MM (.033") | 2-25                 |

\* = TOLERANCE ON PITCH NON-CUMULATIVE

## PROPRIETARY INFORMATION NOTICE

This document and the designs, specifications, and engineering information disclosed herein are the property of Parlex Corp., and are not to be disseminated or reproduced without expressed written consent. This document is loaned in confidence and then only for consideration of the matter disclosed hereon. In accepting loan of this document, the recipient agrees to keep it and the matter disclosed hereon in confidence and not to use or permit their use in any way detrimental to Parlex Corp.



**P**ARLEX CORPORATION  
ONE PARLEX PLACE  
METHUEN, MA 01844

LAMINATED CABLE DIVISION

ROUND TO FLAT GENERIC SPECIFICATIONS

|                  |               |                |                  |
|------------------|---------------|----------------|------------------|
| SIZE<br><b>B</b> | FSCM<br>18377 | <b>PS-2227</b> | Rev.<br><b>E</b> |
| SCALE            | NONE          | SHEET 1 OF 1   |                  |