

Silicon Power Schottky Diode

$V_{RRM} = 20\text{ V} - 100\text{ V}$

$I_F = 240\text{ A}$

Features

- High Surge Capability
- Types up to 100 V V_{RRM}

D-67 Package



Maximum ratings, at $T_j = 25\text{ °C}$, unless otherwise specified ("R" devices have leads reversed)

| Parameter | Symbol | Conditions | MBRH24045 (R) | MBRH24060 (R) | MBRH24080 (R) | MBRH240100 (R) | Unit |
|--|------------|--|---------------|---------------|---------------|----------------|------|
| Repetitive peak reverse voltage | V_{RRM} | | 45 | 60 | 80 | 100 | V |
| RMS reverse voltage | V_{RMS} | | 32 | 42 | 56 | 70 | V |
| DC blocking voltage | V_{DC} | | 45 | 60 | 80 | 100 | V |
| Continuous forward current | I_F | $T_C \leq 136\text{ °C}$ | 240 | 240 | 240 | 240 | A |
| Surge non-repetitive forward current, Half Sine Wave | $I_{F,SM}$ | $T_C = 25\text{ °C}$, $t_p = 8.3\text{ ms}$ | 3300 | 3300 | 3300 | 3300 | A |
| Operating temperature | T_j | | -40 to 175 | -40 to 175 | -40 to 175 | -40 to 175 | °C |
| Storage temperature | T_{stg} | | -40 to 175 | -40 to 175 | -40 to 175 | -40 to 175 | °C |

Electrical characteristics, at $T_j = 25\text{ °C}$, unless otherwise specified

| Parameter | Symbol | Conditions | MBRH24045 (R) | MBRH24060 (R) | MBRH24080 (R) | MBRH240100 (R) | Unit |
|-----------------------|--------|---|---------------|---------------|---------------|----------------|------|
| Diode forward voltage | V_F | $I_F = 240\text{ A}$, $T_j = 25\text{ °C}$ | 0.65 | 0.75 | 0.84 | 0.84 | V |
| Reverse current | I_R | $V_R = 20\text{ V}$, $T_j = 25\text{ °C}$ | 8 | 8 | 8 | 8 | mA |
| | | $V_R = 20\text{ V}$, $T_j = 125\text{ °C}$ | 200 | 200 | 200 | 200 | |

Thermal characteristics

| | | | | | | | |
|-------------------------------------|------------|--|-----|-----|-----|-----|------|
| Thermal resistance, junction - case | R_{thJC} | | 0.8 | 0.8 | 0.8 | 0.8 | °C/W |
|-------------------------------------|------------|--|-----|-----|-----|-----|------|

Figure .1-Typical Forward Characteristics

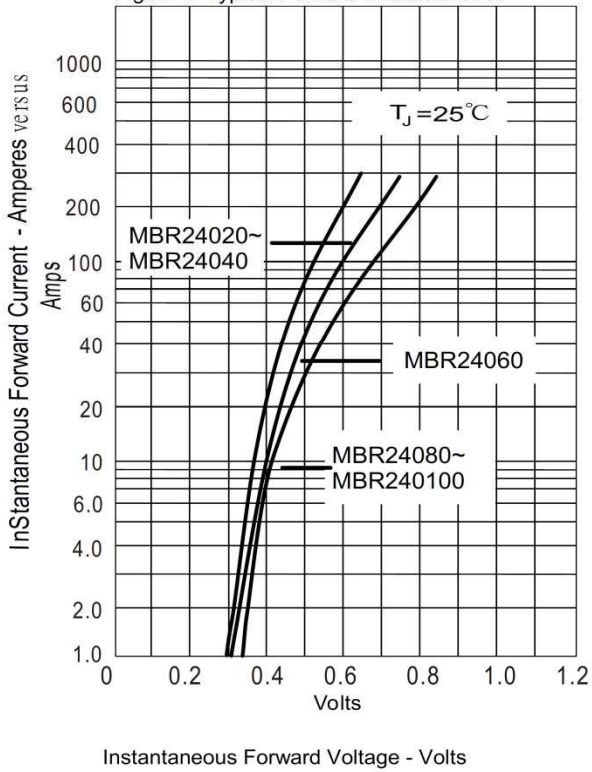


Figure .2- Forward Derating Curve

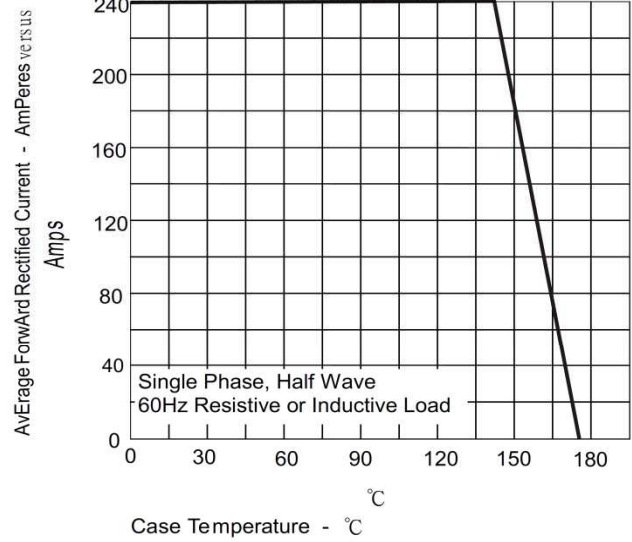


Figure .4-Typical Reverse Characteristics

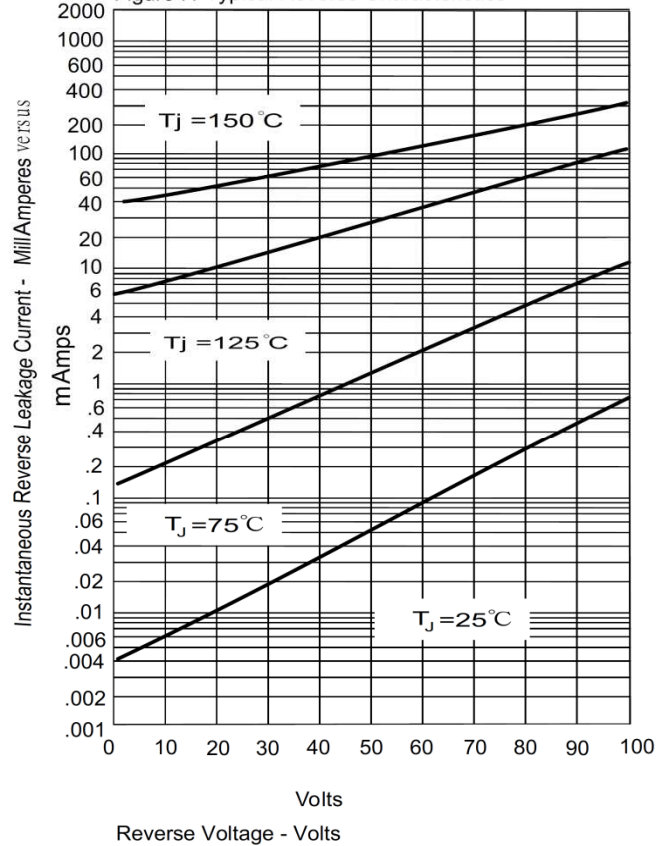
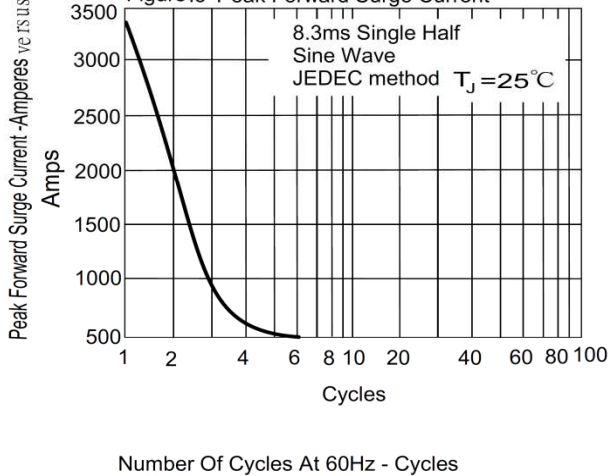
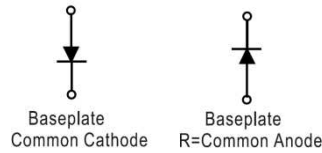
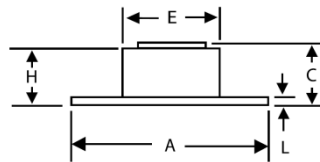
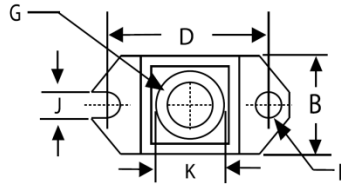


Figure .3- Peak Forward Surge Current



Package dimensions and terminal configuration

Product is marked with part number and terminal configuration.



| DIMENSIONS | | | | | NOTE |
|------------|-------------|-------|-------|-------|------|
| DIM | INCHES | | MM | | |
| | MIN | MAX | MIN | MAX | |
| A | 1.515 | 1.560 | 38.48 | 39.62 | |
| B | .725 | .775 | 18.42 | 19.69 | |
| C | .595 | .625 | 15.11 | 15.88 | |
| D | 1.182 | 1.192 | 30.02 | 30.28 | |
| E | .736 | .744 | 18.70 | 18.90 | |
| F | .152 | .160 | 3.86 | 4.061 | ∅ |
| G | 1/4- 20 UNC | | | | |
| H | .540 | .580 | 13.72 | 14.73 | |
| J | .156 | .160 | 3.96 | 4.06 | |
| K | .480 | .492 | 12.20 | 12.50 | ∅ |
| L | .120 | .130 | 3.05 | 3.30 | |