



Wireless Technology to Control and Monitor Anything from Anywhere™



## SNAP Link Serial Wireless Adapters

*High Performance Wireless RS-232 and RS-485/422*

The **SNAP® Link™** family of robust, mesh networking, serial wireless adapters makes it easy and quick to connect RS-232 and RS-485/422 devices, increasing distance beyond physical wire constraints while reducing installation and, on-going maintenance cost and line noise problems.

Compared to other serial wireless adapters, SNAP Link adapters provide the highest performance, longest distance and quickest configuration in the industry.

Now, linking two (or more) physical serial ports or devices is a SNAP. Just connect each device to one of the SNAP Link adapters and press the Mode button to automatically pair them together, and you're done.

Units are powered by USB or an external AC adapter, included with the product.

---

### Compare Us!

- *Longest Distance in the Industry*
  - *Most Reliable, Robust Mesh Network*
  - *Easiest Setup*
  - **BEST VALUE**
- 
- SNAP—Instant-ON, Self-Healing Mesh Network
  - RS-232 version has a DB-9 port with full hardware flow control
  - RS-485/422 supports two and four wire, half & full duplex
  - Up to 3 Mile Range (Line of Sight)
  - Spread Spectrum (DSSS) technology surmounts noisy environments
  - Supports wireless ModBus
  - LEDs show signal strength & data transmission activity
  - Supports One-to-One and One-to-Many Relationship Configurations
  - -40° to 85° C Operating Temperature, Industrial Use
  - No change to existing equipment
  - RP-SMA antenna connection
  - Micro-B USB port for easy connection to PCs (no serial-to-USB adapter required)



**Models Available with AES-128 encryption for added security**

Two Form Factors available:

- SNAP Link RS-232 (external antenna)
- SNAP Link RS-485/422 (external antenna)

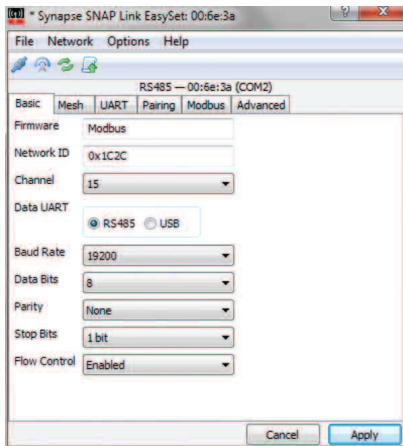


Wireless Technology to Control and Monitor Anything from Anywhere™



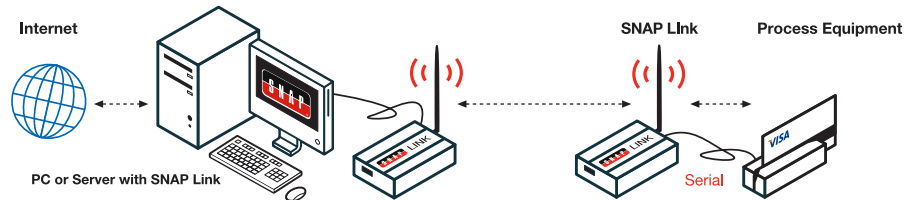
# SNAP Link Serial Wireless Adapters

High Performance Wireless RS-232 and RS-485/422



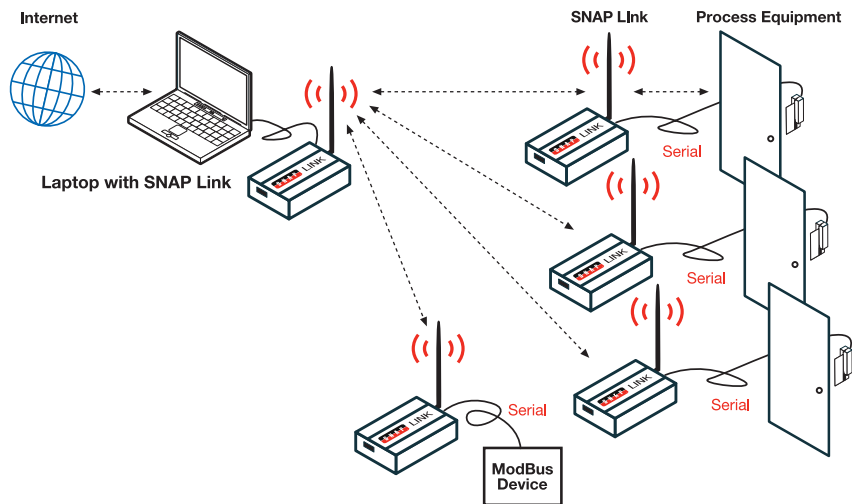
The **SNAP Link EasySet** software applet is an easy-to-use configuration tool that streamlines the setup and configuration of SNAP Link wireless adapters. **SNAP Link EasySet** provides visual indicators and easy-to-change configuration parameters such as baud rate, channel and network ID, data bits, parity, stop bits, flow control and more. **SNAP Link EasySet** is a visually intuitive tool for defining and configuring the SNAP Link products.

PC or Laptop using a pair of SNAP Link RS-232 or RS-485/422 wireless adapters to replace a cable, up to 3 miles (LoS).



Example: One to One pairing using two SNAP Link RS-232 or RS-485/422 Adaptors.

One SNAP Link Adaptor controls multiple SNAP Link serial wireless adapters (either RS-232 or RS-485/422).



Example: One to many RS-232, RS-485/422 talking to 3 door pads & 1 ModBus device.

**SYNAPSE Wireless, Inc.**  
500 Discovery Drive  
Huntsville, Alabama 35806  
877-982-7888  
[synapse-wireless.com](http://synapse-wireless.com)