

SPECIFICATION

- Part No. : **PC17.07.0070A**
- Product Name : Miniature 2.4GHz PCB antenna with cable and connector
- Feature : 24*11*0.8mm
High efficiency antenna for Wi-Fi/ Bluetooth/
ZigBee applications
IPEX MHFI Connector (U.FL compatible)
Stable efficiency, gain and radiation patterns
Cable and Connector fully customizable
RoHS Compliant



1. Introduction

The PC.17 is an ultra-miniature PCB antenna working on 2.4GHz band for Wi-Fi, Bluetooth and ISM applications. It consists of a robust antenna and mini coaxial cable. At only 24mm*11mm*0.8mm it has been especially developed to fit into the smallest spaces and still deliver optimum performance.

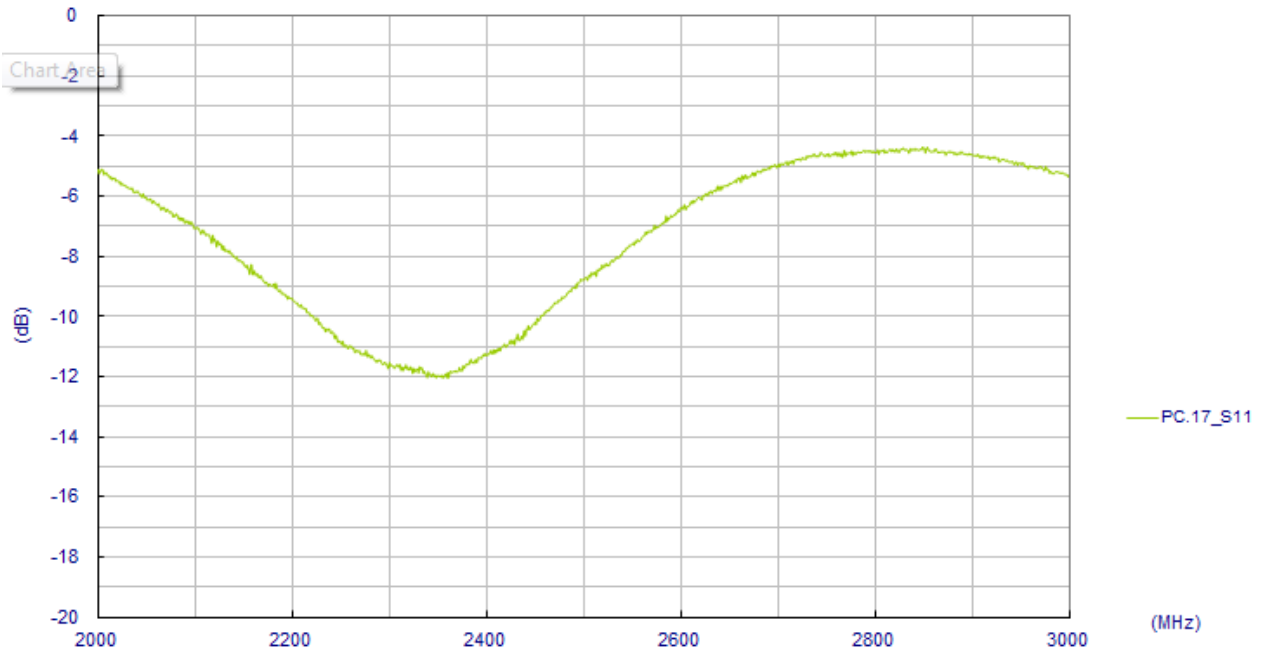
Cable and connector are fully customizable.

2. Specification

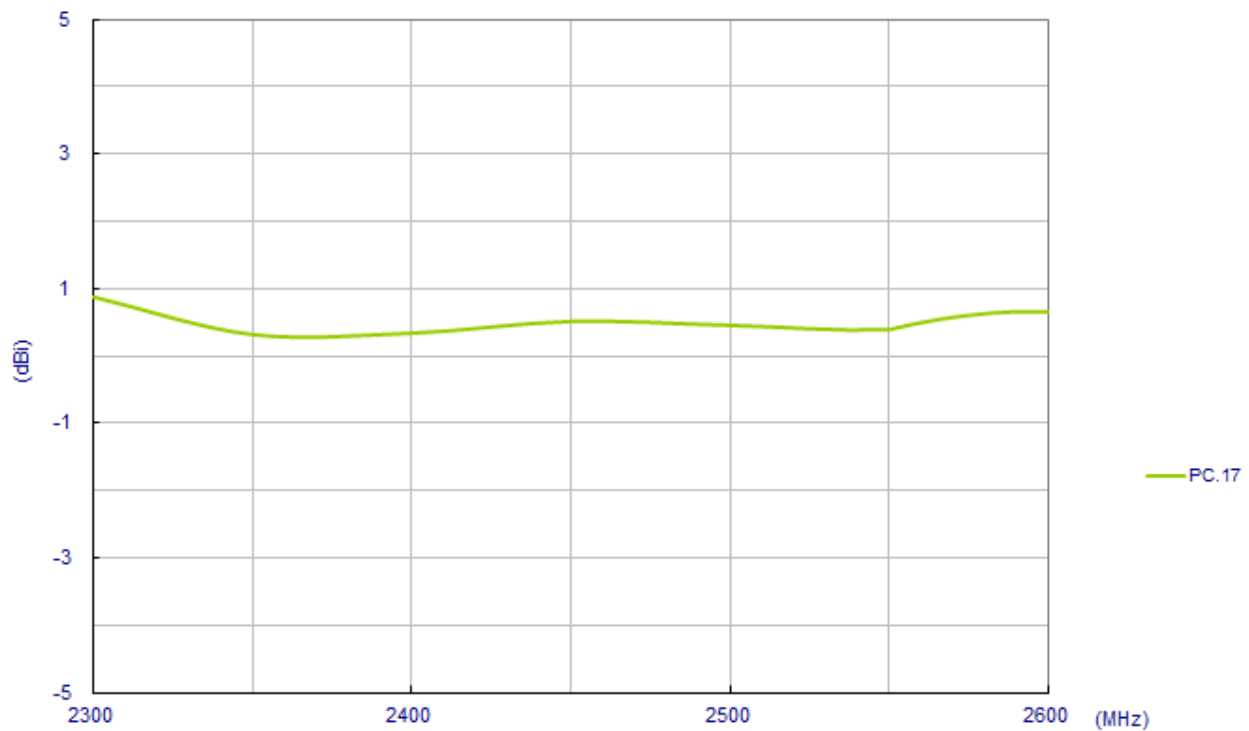
Parameter	Multi-Standard			
Communication System	Bluetooth	Wi-Fi	Zigbee	2.4GHz ISM
	2401-2480	2412-2462	2410-2480	2400-2483.5
Efficiency (%)	44%			
Peak Gain	0.9dBi			
Average Gain	-3.6dBi			
Return Loss	- 12dB			
Impedance	50 Ohms			
VSWR	≤1.5:1			
Polarization	Linear			
Power Handled	2 W			
MECHANICAL				
Dimensions	10.75 X 24 X 0.8 mm			
Connector	MHFI (U.FL Compatible)			
Cable Standard	Mini-Coax 1.13 mm			
ENVIRONMENTAL				
Operation Temperature	-40 °C ~ +85 °C			
Storage Temperature	-40 °C ~ +85 °C			
RoHS Compliant	Yes			

3. Antenna performance

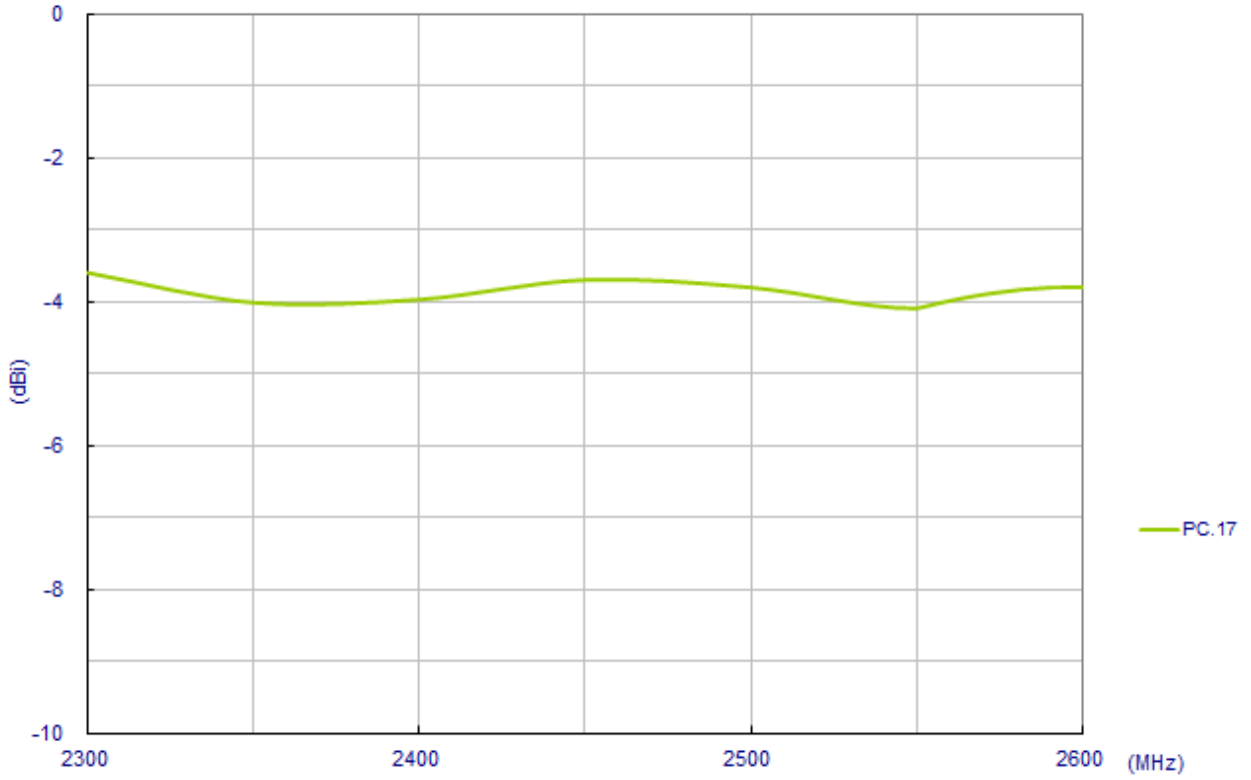
3.1. Return Loss



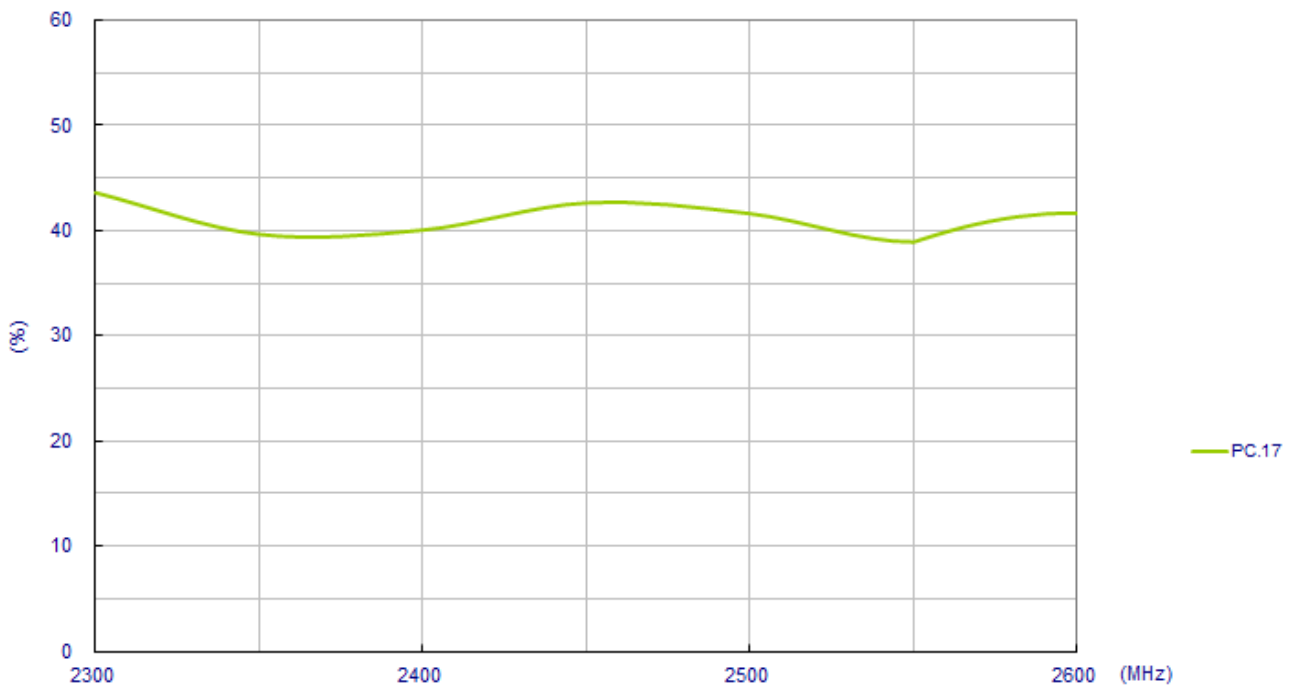
3.2. Maximum Gain



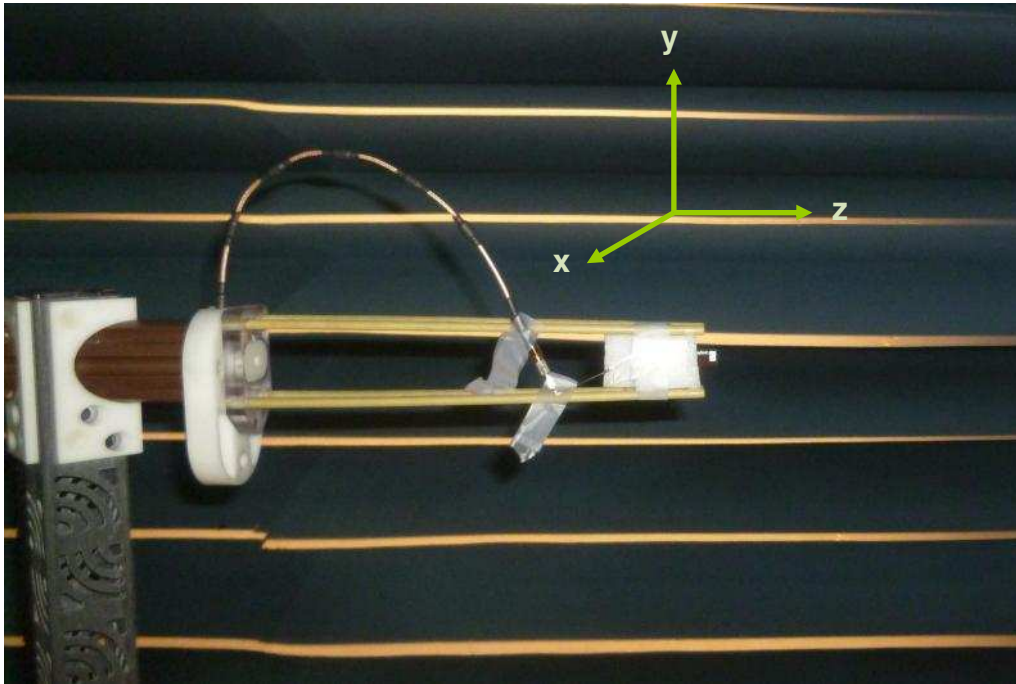
3.3. Average Gain



3.4. Antenna efficiency

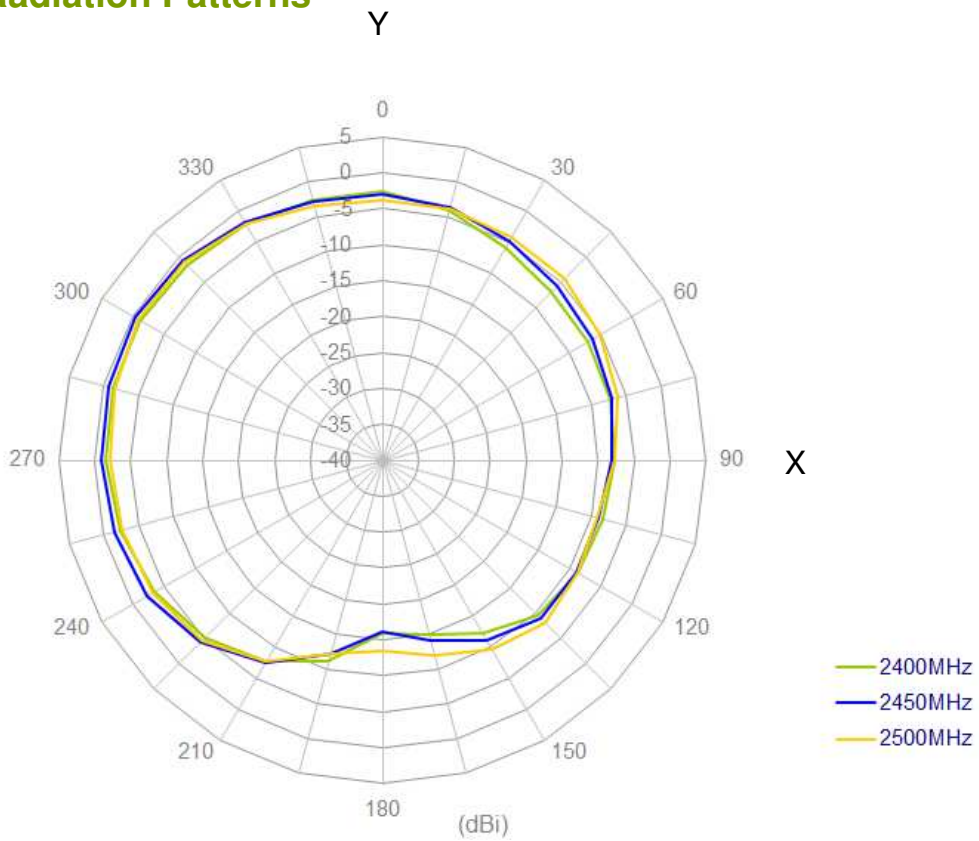


4. Radiation Property

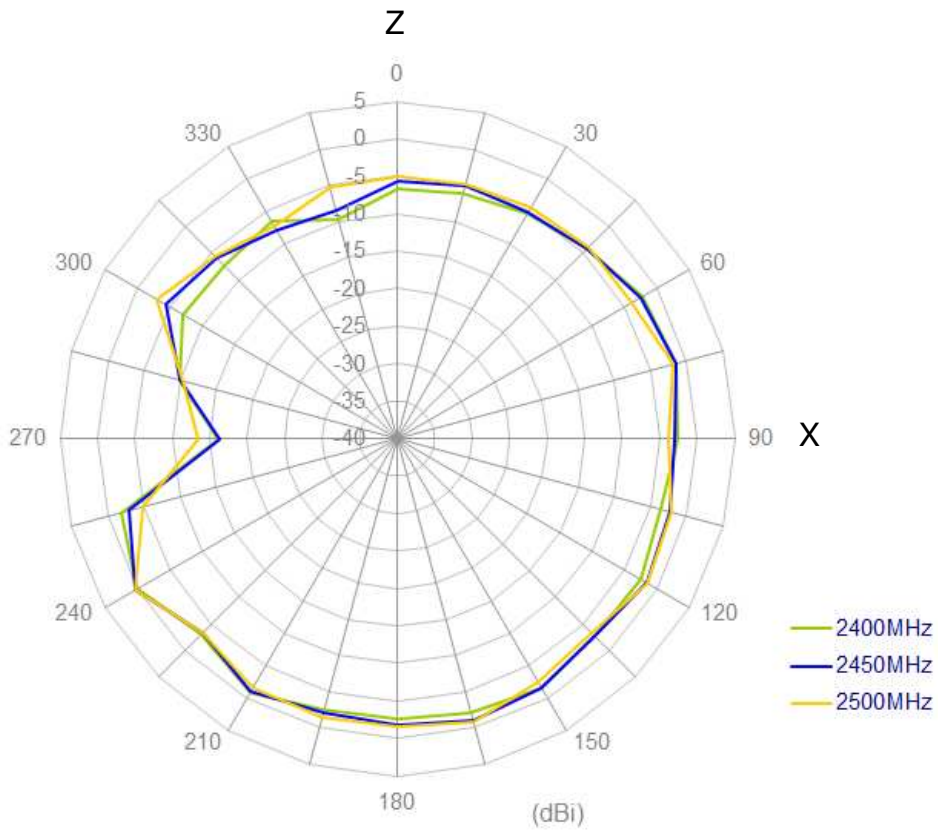


4.1. Radiation Patterns

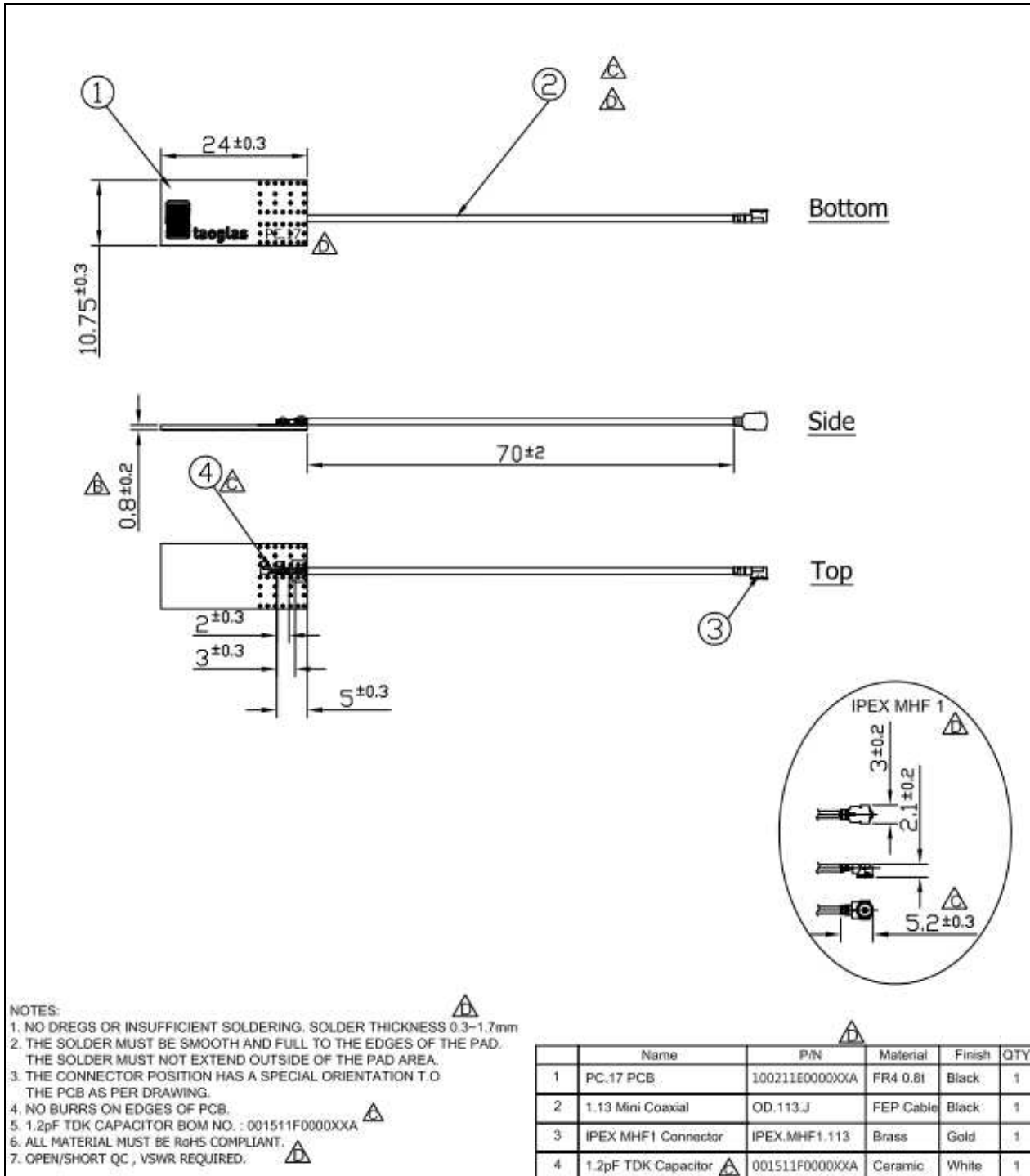
X-Y Plane



X-Z plane



5. Antenna Drawing



6. Packaging

