

SPECIFICATION

Part No. : **PC24.09.0100A**

Product Name : **TheStripe™** 850/900/1800/1900MHz GSM PCB
Antenna
100mm Ø1.13mm MMCX(M)RA Connector

Features : 42mm*42mm*1.6mm

Photo:



1. Introduction

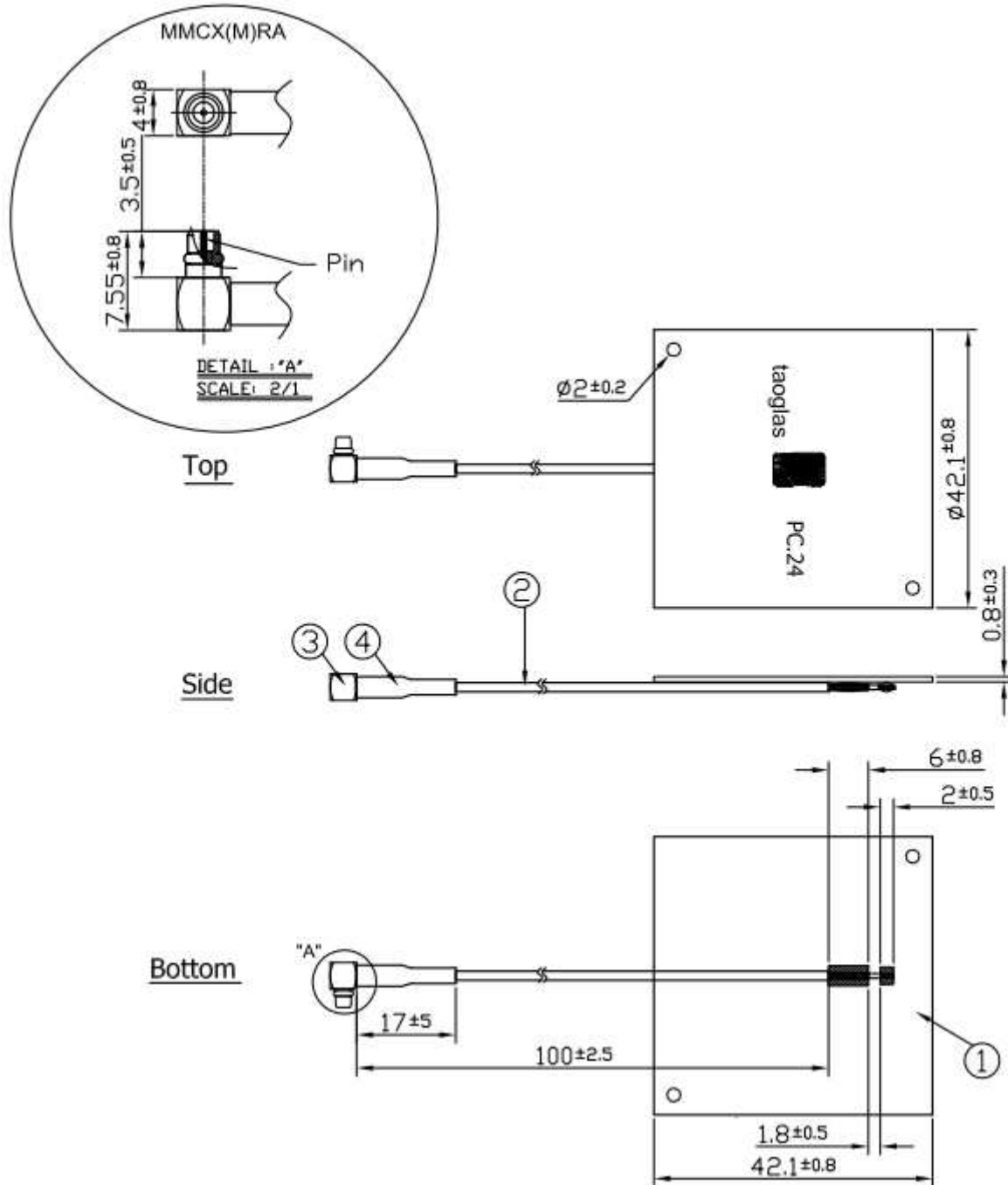
The PC24 Internal PCB Antenna is a compact square Quad-band GSM antenna for incorporation in antennas and transceiver modules to be used worldwide. Omni-directional gain across all bands ensures constant reception and transmission. Cables and connectors are fully customizable. Antennas can be tuned to customer housing on request.

2. Typical Antenna Performance in free space

Specifications				
ELECTRICAL				
	AMPS	GSM	PCS	DCS
Band	824-896	880-960	1850-1990	1710-1880
Return Loss	-12 dB	-25 dB	-12 dB	-10 dB
Gain	Average 0 dBi			
Polarization	Linear			
Impedance	50 ohms			
Input Power	10 watts			
Input Connection	Coaxial Cable – IpeX 1.13 100mm MHF Standard, Fully customizable			
VSWR (Min performance)	<2.0:1			
MECHANICAL				
Dimensions (L x W)	42 mm x 42mm			

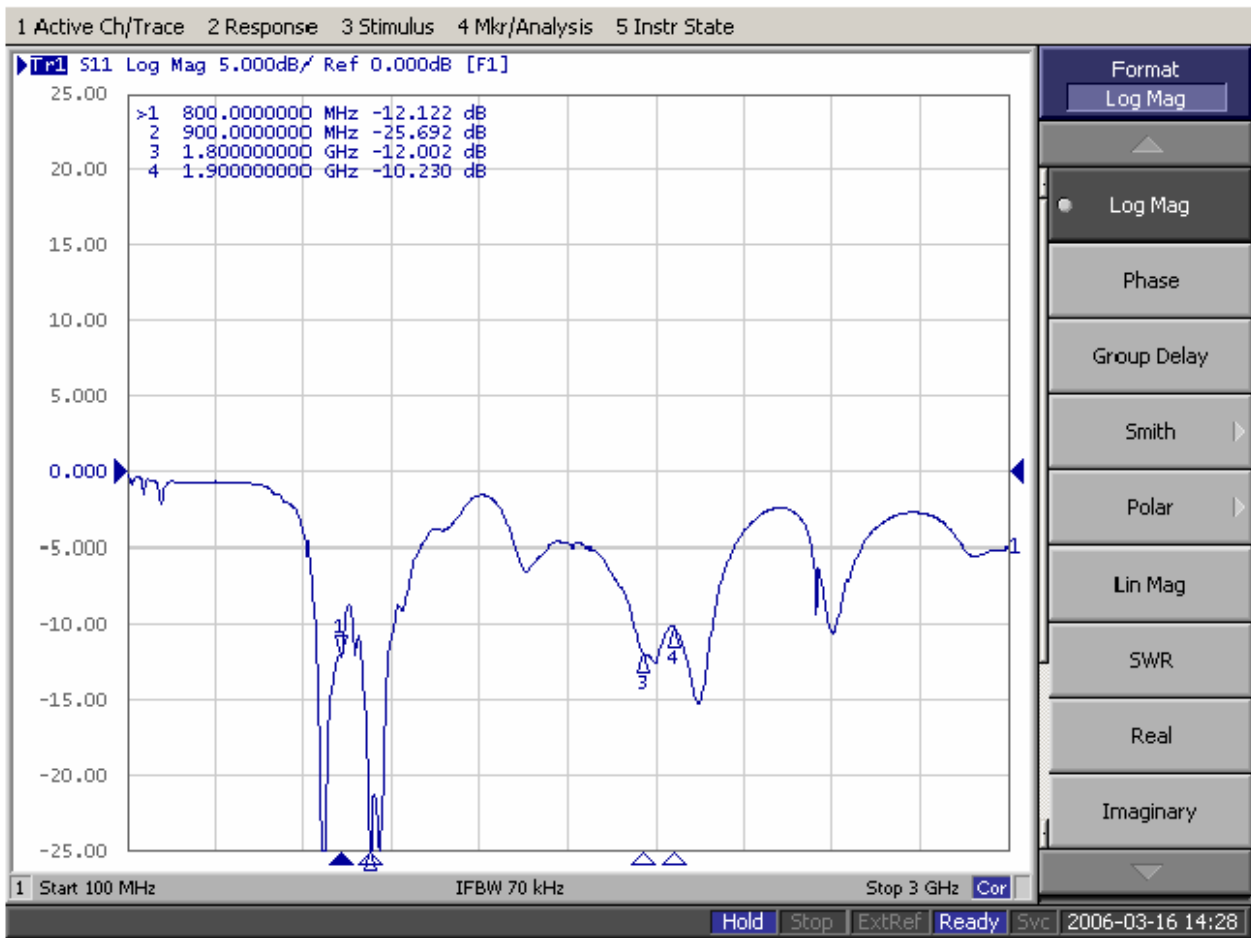
***note: specifications may be subject to change**

3.Drawing



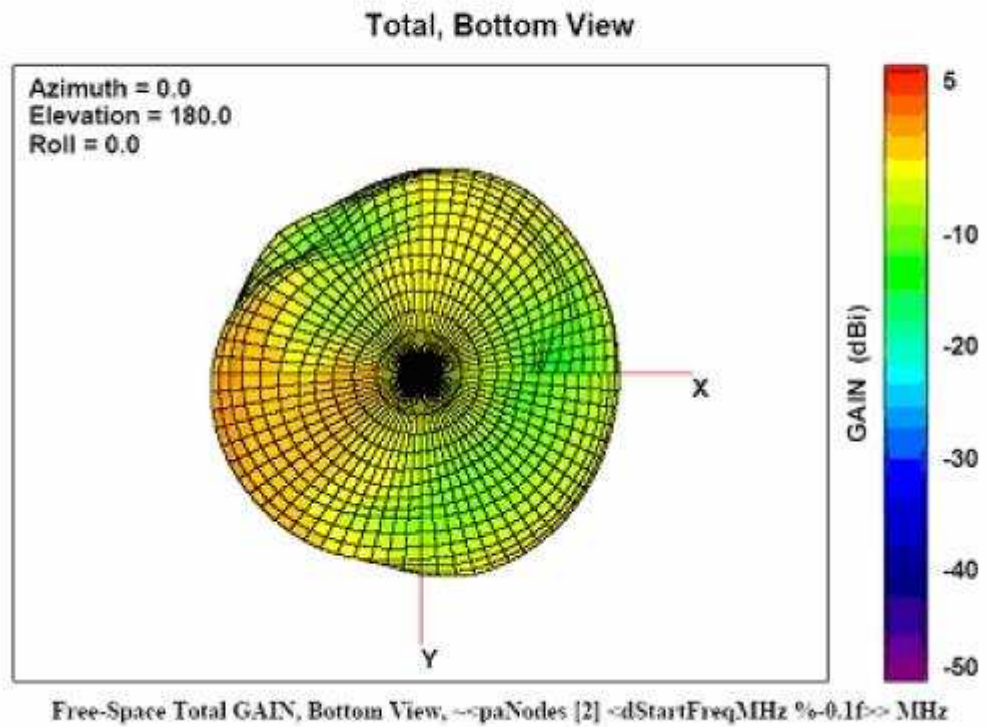
4.S11 Magnitude

S11 Magnitude



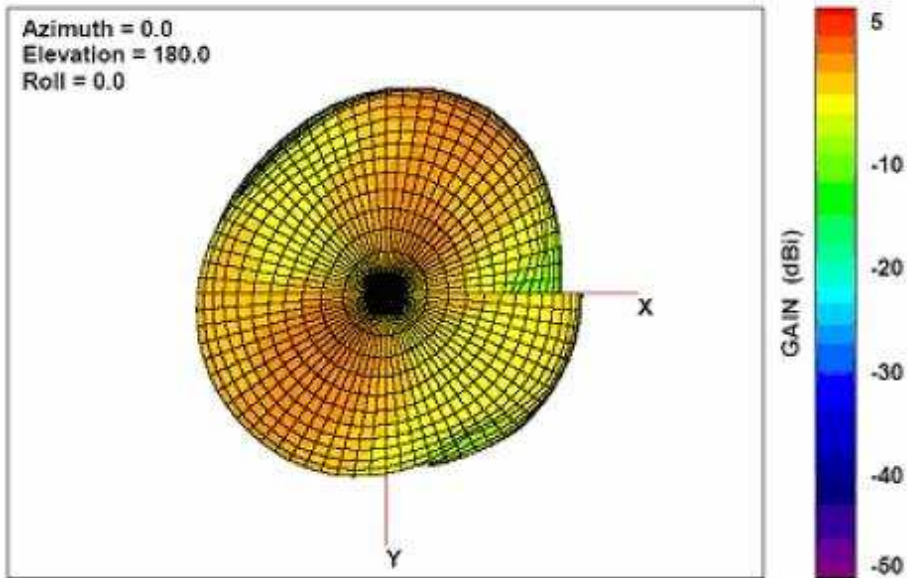
5. Radiation Patterns

800 MHz – 3D Radiation Pattern



900 MHz – 3D Radiation Pattern

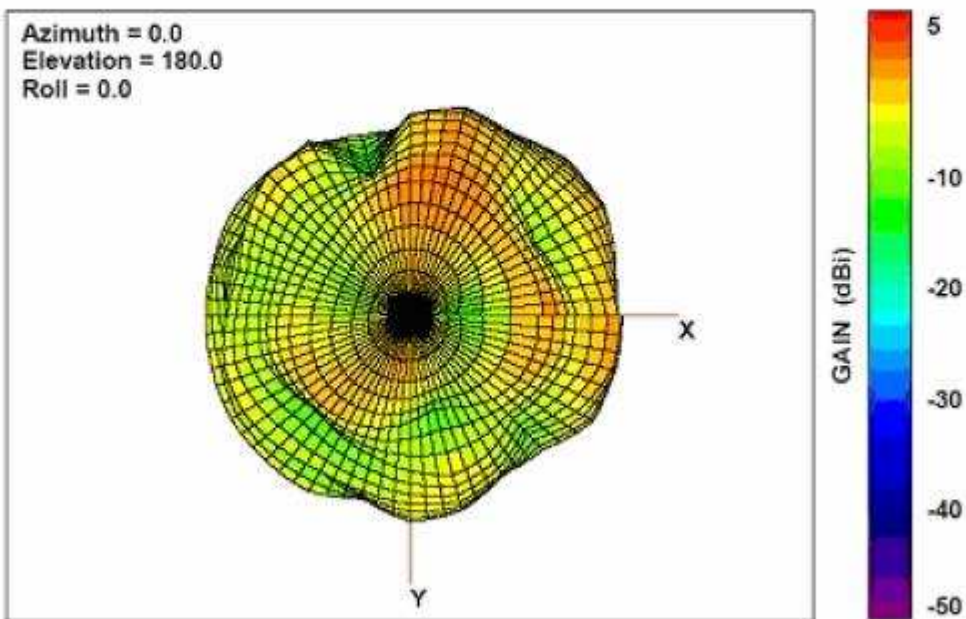
Total, Bottom View



Free-Space Total GAIN, Bottom View, 900.0 MHz

1800 MHz – 3D Radiation Pattern

Total, Bottom View



Free-Space Total GAIN, Bottom View, 1800.0 MHz

1900 MHz – 3D Radiation Pattern

