



Specification

SPECIFICATION

- Part No. : **SA.PANEL.20**
- Spec No. : **3020**
- Product Name : **17dBi Vertical Polarized 120° Sector Antenna
4900-5900MHz**
- Dimensions : **630*70*70mm**
- Features : **Excellent Radiation Patterns
Wide Bandwidth with high gain across the band
UV Stabilised Radome with Stainless steel Brackets
RoHS Compliant**



REVISION STATUS

| Version | Date | Page | Revision Description | Prepared | Approved |
|---------|---------------------------|------|----------------------|-------------------|---------------|
| 01 | Aug 12 th 2009 | All | New Product | TW Product Centre | Ronan Quinlan |
| | | | | | |
| | | | | | |



Specification

1.0 Introduction

This broadband vertically polarized base-station antenna is designed for sectored applications offering superior Azimuth and Elevation pattern control across the entire frequency band. These antennas are aesthetically pleasing while maintaining a rugged design.

Applications:- Base-station Antennas, Point to Multi-Point Solutions, 802.11 Wi-Fi.

2.0 Antenna Performance

2.1 Electrical Specifications

| No. | Parameter | Specification |
|-----|----------------------------|---------------|
| 1 | Communication System | Wireless LAN |
| 2 | Frequency Band | 4900-5900 MHz |
| 3 | Return Loss | >14dB |
| 4 | Gain | 17 dBi |
| 5 | Impedance | 50 Ohm |
| 6 | Polarization | Vertical |
| 7 | Max Power Handling | 50W |
| 8 | Horizontal Beamwidth | 120° |
| 9 | Vertical Beamwidth | 5° |
| 10 | Front to Back Ratio | >25dB |
| 11 | Upper Sidelobe Suppression | >18dB |
| 12 | Electrical Downtilt | 0° |

2.2 Mechanical Specifications

| No. | Parameter | Specification |
|-----|--------------------|----------------------------------|
| 1 | Connector | N Type Female |
| 2 | Connector Location | Bottom |
| 3 | Dimensions (L*W*D) | 630*70*70mm |
| 4 | Weight | 2kg |
| 5 | Radome | UV Stabilised ASA |
| 6 | Mounting | Adjustable pipe mount (included) |

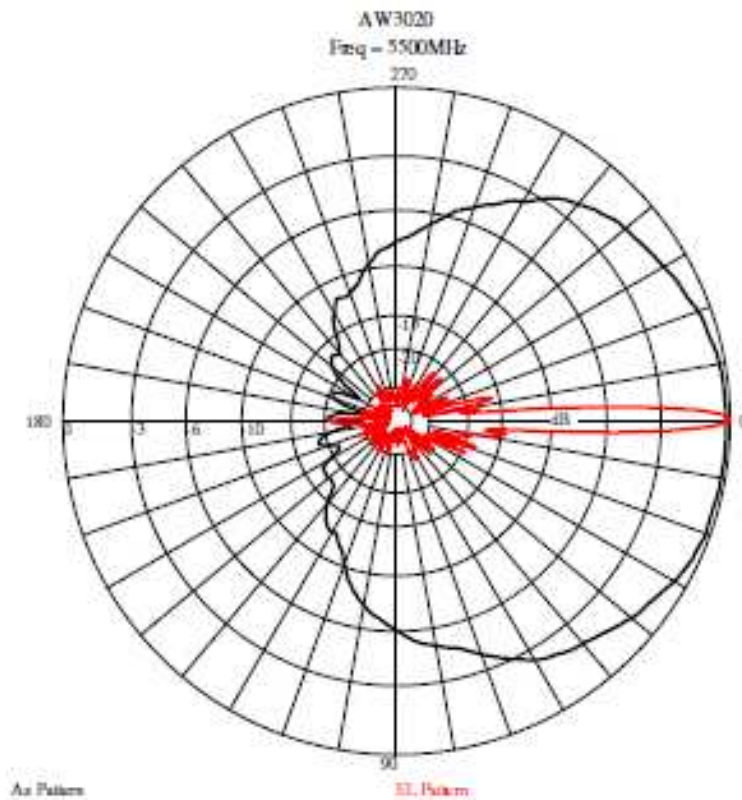


Specification

2.3 Environmental Ratings

| No. | Parameter | Specification |
|-----|-----------------------|------------------|
| 1 | Rated Wind Velocity | 200km/h (125mph) |
| 2 | Lightening Protection | DC Grounded |
| 3 | Temperature | -40°C to +70°C |

3.0 Performance



Typical Azimuth and Elevation Pattern