

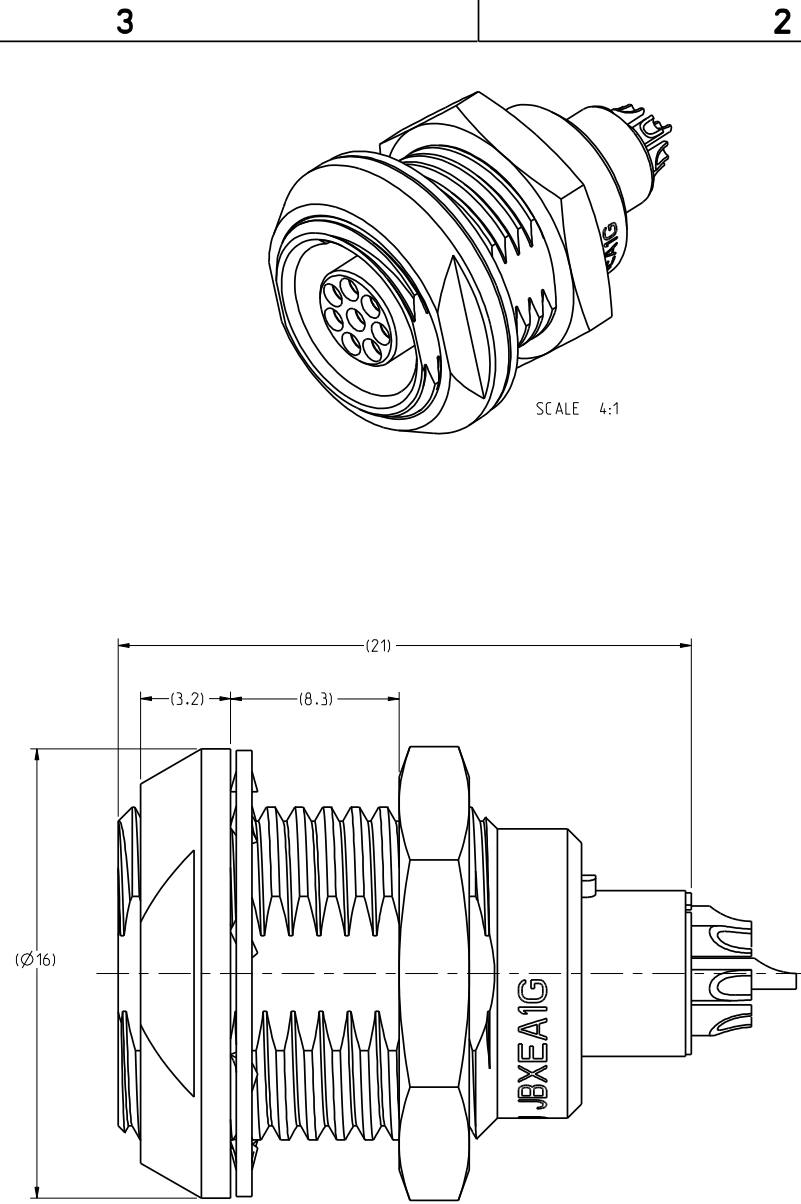
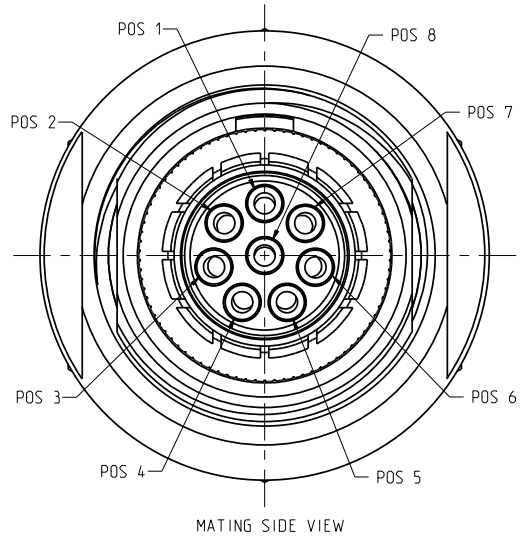
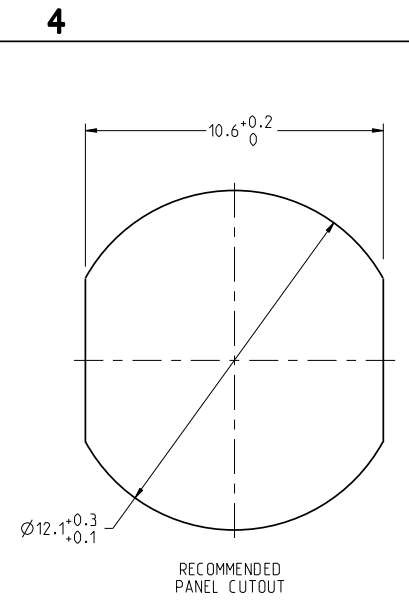
DWG. NO.
JBXEAI08FSSDSC

THIS DRAWING IS A CONTROLLED DOCUMENT FOR SOURIAU USA, INC. CONTACT THE DOCUMENT CONTROL CENTER FOR THE LATEST REVISION.

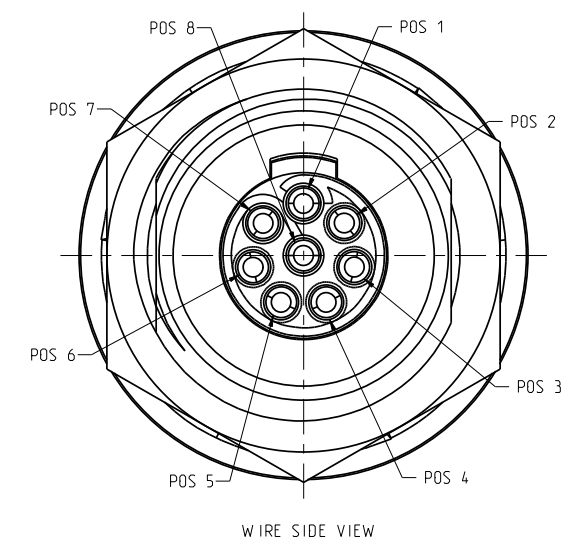
C

B

THE INFORMATION CONTAINED IN THIS DRAWING IS CONFIDENTIAL AND MAY NOT BE DISCLOSED WITHOUT WRITTEN CONSENT FROM SOURIAU USA, INC.



NOTES:
MATERIAL:
 OUTER SHELL & PANEL NUT : } BRASS CuZn40Pb3 (C38500/C36000)
 SHIELDING RING : }
 NUT : }
 SOCKET CONTACT (SOLDER) : CUPRO-NICKEL CuNi1Pb1P (CDAC 19150)
 INSULATOR : PEEK WITH 15% GLASS FILLED, COLOR BROWN
FINISH:
 OUTER SHELL : CHROME OVER NICKEL UNDERCOAT
 OTHER BRASS PARTS EXCEPT SOCKET CONTACTS : NICKEL
 SOCKET CONTACTS : GOLD AS PER MIL-G-45204C TYPE 1, CLASS 00.



| | | | |
|-----|------------------------|--------------|--------------|
| A | RELEASED PER ECN 11353 | SSF 01-26-11 | SDH 01-26-11 |
| REV | DESCRIPTION | BY DATE | CHKD DATE |

DRAWING TITLE
JBX, SIZE 1, 8 POSITION, EA RECEPTACLE
CAT NO. **JBXEAI08FSSDSC**

| | |
|---------------------------------------|---|
| LINEAR MEASURE: | <input checked="" type="checkbox"/> INCH <input type="checkbox"/> MM (INCH) |
| THIRD ANGLE PROJECTION | |
| TOLERANCES UNLESS OTHERWISE SPECIFIED | |
| No. OF PLACES | mm (INCH) |
| WHOLE No. | ±0.5 (±.02) |
| ONE PLACE | ±0.2 (±.008) |
| TWO PLACES | ±0.1 (±.004) |
| ANGLES ±1° | |

CAGE NO: 09922 SIZE: C
CUSTOMER
 INTERPRET THIS DRAWING IN ACCORDANCE WITH ASME Y14.5M - 1994.

| | | |
|-----------------------|-----|----------|
| DRAWN: | RK0 | 12-28-10 |
| CHKD: | TW | 12-28-10 |
| DSGN: | XXX | mm-dd-yy |
| MFG: | DH | 12-28-10 |
| QC: | DK | 12-28-10 |
| DRAWING SCALE: 6:1 | | |
| DRAWING NO. | REV | |
| JBXEAI08FSSDSC | A | |
| 1 OF 2 | | |

D

C

B

A

4

3

2

1

PRO-E

DWG. NO.
JBXE1G08FSSDSC

THIS DRAWING IS A CONTROLLED DOCUMENT FOR SOURIAU USA, INC. CONTACT THE DOCUMENT CONTROL CENTER FOR THE LATEST REVISION.

C

B

THE INFORMATION CONTAINED IN THIS DRAWING IS CONFIDENTIAL AND MAY NOT BE DISCLOSED WITHOUT WRITTEN CONSENT FROM SOURIAU USA, INC.

ELECTRICAL:

EMI SHIELDING : SHIELDED FOR THE RANGE 55dB UP TO 100MHz

INSULATION RESISTANCE : >500M Ω PER ANSI-EIA-364-D METHOD 21

MAX. CURRENT RATING : (SEE TABLE 1)
MAXIMUM CURRENT THAT CAN BE APPLIED SIMULTANEOUSLY ON EACH LINE OF THE CONNECTOR MATED PAIR, CONTINUOUSLY DURING ITS LIFE TIME IN NORMAL CLIMATIC CONDITIONS.

CONNECTOR TESTING : 1200 Vrms
VOLTAGE TEST VOLTAGE IS APPROXIMATELY 75% OF THE DWV VOLTAGE AT NORMAL CLIMATIC CONDITIONS. THIS VOLTAGE CAN BE ACHIEVED SEVERAL TIMES, BUT NOT APPLIED CONTINUOUSLY.

CONNECTOR WORKING : 600/420 (Vdc/ Vrms)
VOLTAGE WORKING VOLTAGE IS APPROXIMATELY 1/3 OF THE TEST VOLTAGE. THIS VOLTAGE IS SUSTAINABLE FOR THE LIFE OF THE CONNECTOR IN ITS WORKING ENVIRONMENT.

PHYSICAL:

MAXIMUM WIRE SIZE USED : 26 AWG

ENVIRONMENTAL:

ENDURANCE: 1000 CYCLES AS PER MIL-STD 1344A, METHOD 2016.1

SHOCK: 50 g . DURATION 6 ms; AS PER MIL-STD 1344A, METHOD 2004.1

VIBRATIONS: 10 TO 2000Hz $\gamma = 15g$, AS PER MIL-STD 1344A, METHOD 2005.1

PROTECTION INDEX: IP 40 AS PER CEI 529

OPERATING TEMPERATURE: -55°C TO +200°C (-67°F TO +392°F)

SOCKET CONTACT

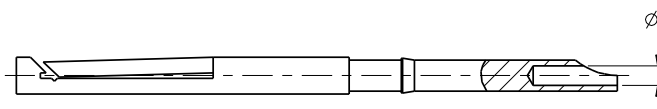


TABLE 1

| CONTACT | | USABLE CABLES | | | MAX. CURRENT RATING (A) | CONTACT RESISTANCE (m Ω) |
|-----------------|-----------------|---------------------------------|------|-----|-------------------------|----------------------------------|
| $\varnothing C$ | $\varnothing F$ | CORE SECTION (mm ²) | | AWG | | |
| | | MIN. | MAX. | | | |
| - | 0.63 | - | 0.15 | 26 | 7 | 5 |

DRAWING TITLE
JBX, SIZE 1, 8 POSITION, EA RECEPTACLE

CAT NO. **JBXE1G08FSSDSC**

CAGE NO: 09922 SIZE: C

CUSTOMER



www.souriau.com

| | |
|----------|-------------------------|
| APPROVAL | DRAWN: RKO 12-28-10 |
| | CHKD : TW 12-28-10 |
| | DSGN : XXX mm-dd-yy |
| | MFG : DH 12-28-10 |
| | QC : DK 12-28-10 |
| | DRAWING SCALE: 6:1 |
| | DRAWING NO. REV |
| | JBXE1G08FSSDSC A |
| | 2 OF 2 |

| | |
|---------------------------------------|--|
| LINEAR MEASURE: | $\frac{1}{16}$ (INCH) $\frac{1}{2}$ (INCH) |
| THIRD ANGLE PROJECTION | |
| TOLERANCES UNLESS OTHERWISE SPECIFIED | |
| No. OF PLACES | mm (INCH) |
| WHOLE No. | ± 0.5 ($\pm .02$) |
| ONE PLACE | ± 0.2 ($\pm .008$) |
| TWO PLACES | ± 0.1 ($\pm .004$) |
| ANGLES | ± 1 |

INTERPRET THIS DRAWING IN ACCORDANCE WITH ASME Y14.5M - 1994.

D

C

B

A

4

3

2

1

PRO-E