

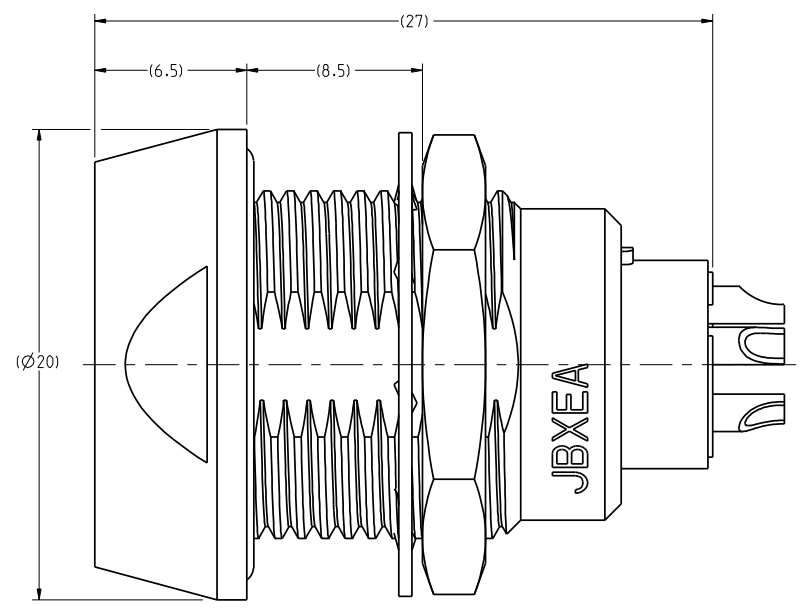
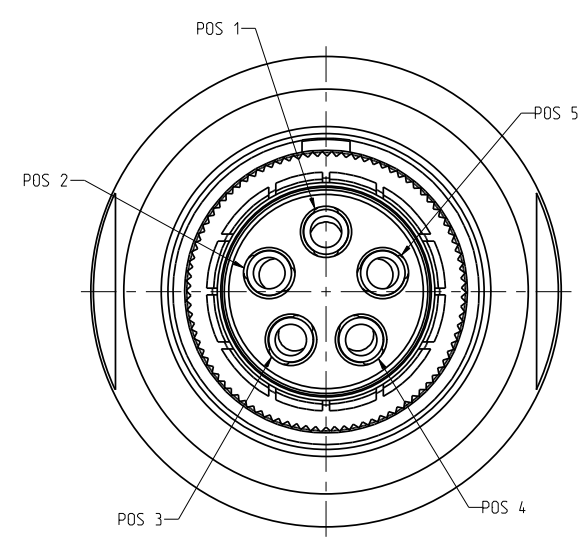
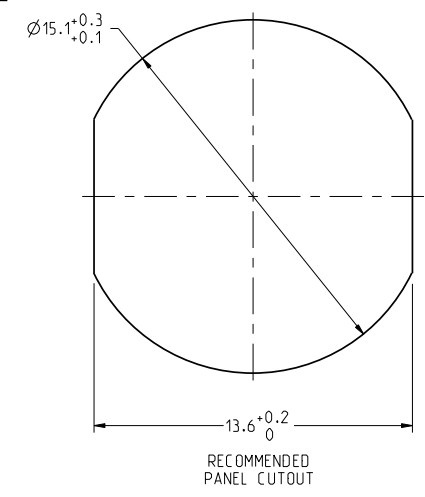
THIS DRAWING IS A CONTROLLED DOCUMENT FOR SOURIAU USA, INC. CONTACT THE DOCUMENT CONTROL CENTER FOR THE LATEST REVISION.

C

B

THE INFORMATION CONTAINED IN THIS DRAWING IS CONFIDENTIAL AND MAY NOT BE DISCLOSED WITHOUT WRITTEN CONSENT FROM SOURIAU USA, INC.

DWG. NO. **JBXEC2G05FSSDSC**



**NOTES:**

**MATERIAL:**

OUTER SHELL & PANEL NUT : } BRASS CuZn40Pb3 (C38500/C36000)  
 SHIELDING RING : }  
 NUT :

SOCKET CONTACT (SOLDER) : CUPRO-NICKEL CuNi1Pb1P (CDAC 19150)

CLIP: BERYLLIUM COPPER CuBe1.9 (C17200/C36000)

INSULATOR : PEEK WITH 15% GLASS FILLED, COLOR BROWN

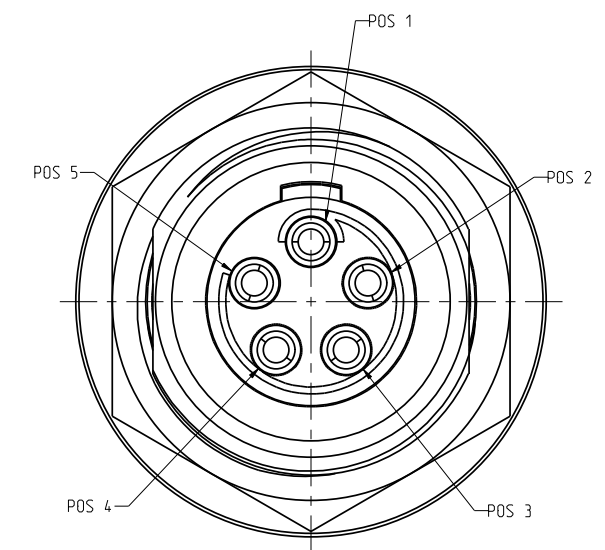
SEALS : NITRILE AND SILICON RUBBER

**FINISH:**

OUTER SHELL : CHROME OVER NICKEL UNDERCOAT

OTHER BRASS PARTS EXCEPT SOCKET CONTACTS : NICKEL

SOCKET CONTACTS : GOLD AS PER MIL-G-45204C TYPE 1, CLASS 00.



A	RELEASED PER ECN 11345	SSF 01-18-11	SDH 01-18-11
REV	DESCRIPTION	BY DATE	CHKD DATE

DRAWING TITLE  
**JBX, SIZE 2, 5 POSITION, EC RECEPTACLE**

CAT NO. **JBXEC2G05FSSDSC**

CAGE NO: 09922 SIZE: C

**CUSTOMER**



www.souriau.com

DRAWN:	SNL	01-01-11
CHKD:	TW	01-01-11
DSGN:	XXX	mm-dd-yy
MFG:	DH	01-01-11
QC:	DK	01-01-11

DRAWING SCALE: 5:1  
 DRAWING NO. REV

**JBXEC2G05FSSDSC** A

1 OF 2

INTERPRET THIS DRAWING IN ACCORDANCE WITH ASME Y14.5M - 1994.

4

3

2

1

PRO-E

DWG. NO.  
**JBXEC2G05FSSDSC**

THIS DRAWING IS A CONTROLLED DOCUMENT FOR SOURIAU USA, INC. CONTACT THE DOCUMENT CONTROL CENTER FOR THE LATEST REVISION.

C

B

THE INFORMATION CONTAINED IN THIS DRAWING IS CONFIDENTIAL AND MAY NOT BE DISCLOSED WITHOUT WRITTEN CONSENT FROM SOURIAU USA, INC.

**ELECTRICAL:**

EMI SHIELDING : SHIELDED FOR THE RANGE 55dB UP TO 100MHz

INSULATION RESISTANCE : >500M $\Omega$  PER ANSI-EIA-364-D METHOD 21

MAX. CURRENT RATING : (SEE TABLE 1)  
MAXIMUM CURRENT THAT CAN BE APPLIED SIMULTANEOUSLY ON EACH LINE OF THE CONNECTOR MATED PAIR, CONTINUOUSLY DURING ITS LIFE TIME IN NORMAL CLIMATIC CONDITIONS.

CONNECTOR TESTING VOLTAGE : 1900Vrms  
TEST VOLTAGE IS APPROXIMATELY 75% OF THE DWV VOLTAGE AT NORMAL CLIMATIC CONDITIONS. THIS VOLTAGE CAN BE ACHIEVED SEVERAL TIMES, BUT NOT APPLIED CONTINUOUSLY.

CONNECTOR WORKING VOLTAGE : 900/630 (Vdc/ Vrms)  
WORKING VOLTAGE IS APPROXIMATELY 1/3 OF THE TEST VOLTAGE. THIS VOLTAGE IS SUSTAINABLE FOR THE LIFE OF THE CONNECTOR IN ITS WORKING ENVIRONMENT.

**PHYSICAL:**

MAXIMUM WIRE SIZE USED : 20 AWG

**ENVIRONMENTAL:**

ENDURANCE: 1000 CYCLES AS PER MIL-STD 1344A, METHOD 2016.1

SHOCK: 100 g . DURATION 6 ms; AS PER MIL-STD 1344A, METHOD 2004.1

VIBRATIONS: 10 TO 2000Hz  $\gamma$  = 20g, AS PER MIL-STD 1344A, METHOD 2005.1

PROTECTION INDEX: IP 67 AS PER CEI 529

OPERATING TEMPERATURE: -40°C TO +80°C (-40°F TO +176°F)

SOCKET CONTACT

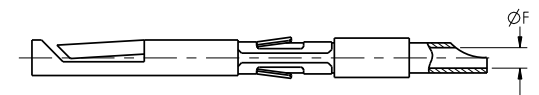


TABLE 1

CONTACT		USABLE CABLES			MAX. CURRENT RATING (A)	CONTACT RESISTANCE (m $\Omega$ )
$\phi$ C	$\phi$ F	CORE SECTION (mm <sup>2</sup> )		AWG		
		MIN.	MAX.			
-	1.1	-	0.60	20	15	3

DRAWING TITLE  
**JBX, SIZE 2, 5 POSITION, EC RECEPTACLE**

CAT NO.: **JBXEC2G05FSSDSC**

CAGE NO: 09922	SIZE: C
<b>CUSTOMER</b>	 <b>SOURIAU</b> Connection Technology www.souriau.com
INTERPRET THIS DRAWING IN ACCORDANCE WITH ASME Y14.5M - 1994.	

DRAWN: SNL	01-01-11
CHKD: TW	01-01-11
DSGN: XXX	mm-dd-yy
MFG: DH	01-01-11
QC: DK	01-01-11
DRAWING SCALE: 5:1	
DRAWING NO.	REV
<b>JBXEC2G05FSSDSC</b>	<b>A</b>
2 OF 2	

D

C

B

A

4

3

2

1

PRO-E