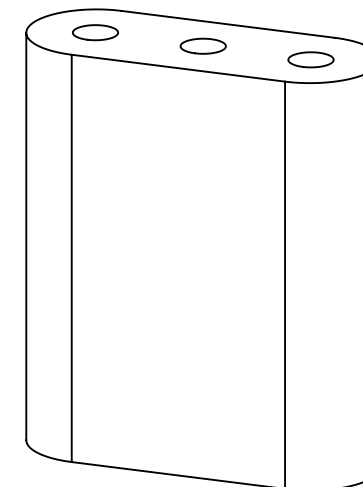
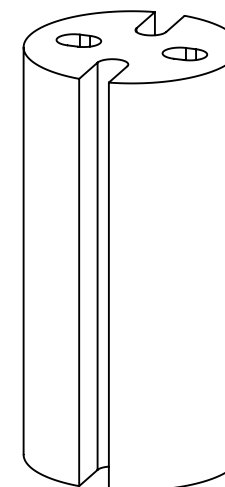


PART NO.	"A" $\pm$ .020	"B" $\pm$ .020	"C"	"D"	LED TYPE	MATERIAL	FIGURE NO.
LEDS1-3-26	3/16 [4.8]	.156 [4]	.047 [1.2]	.06 [1.5]	T-1	FLEXIBLE PVC (RMS-388), COLOR: BLACK	1
LEDS1-4-26	1/4 [6.4]						
LEDS1-6-26	3/8 [9.5]						
LEDS1-8-26	1/2 [12.7]						
LEDS1-10-26	5/8 [15.9]						
LEDS1-12-26	3/4 [19.1]						
LEDS1-14-26	7/8 [22.2]	.188 [4.8]	.060 [1.5]	.10 [2.5]	T-1 3/4	FLEXIBLE PVC (RMS-388), COLOR: BLACK	1
LEDS2-3-26	3/16 [4.8]						
LEDS2-4-26	1/4 [6.4]						
LEDS2-6-26	3/8 [9.5]						
LEDS2-8-26	1/2 [12.7]						
LEDS2-10-26	5/8 [15.9]						
LEDS2-12-26	3/4 [19.1]	.32 [8.1]	-	.10 [2.5]	T-1 & T-1 3/4	FLEXIBLE PVC (RMS-26), COLOR: BLACK	2
LEDS2-14-26	7/8 [22.2]						
LEDS3-3-26	3/16 [4.8]						
LEDS3-4-26	1/4 [6.4]						
LEDS3-6-26	3/8 [9.5]						
LEDS3-8-26	1/2 [12.7]						
LEDS3-10-26	5/8 [15.9]	3/4 [19.1]					
LEDS3-12-26							



REV.	DESCRIPTION	ENGR.	DATE
H	MATERIAL CHANGE FROM -317 TO -388, ECN#1373	DZ	DEC14,2012
G	REDRAWN, SERIES EXPANSION, CO 200729	SK	OCT20,2011
-	SEE ENGINEERING FOR REV A TO F	---	-----

TITLE: LED SPACERS				UNITS= IN [mm]		FINAL	
CREATED USING SOLIDWORKS	FILE #: LEDS	DWN: SK	APP: -	FINAL			
TOLERANCES UNLESS NOTED .XX= $\pm$ .02 .XXX= $\pm$ .015 FRAC.= $\pm$ 1/32 ANG.= $\pm$ 1°	SHEET: 1 OF 1	SHEET SIZE: B	DT: 10/13/11	CHKD: -	PART #		PRINT TYPE
RE: RICHCO, INC		RICHCO, INC. WWW.RICHCO-INC.COM		SEE TABLE		CA	