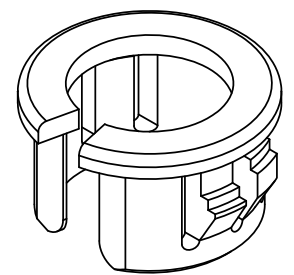
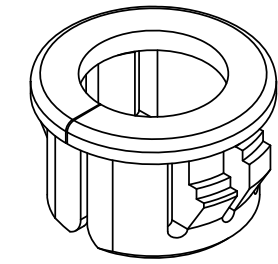
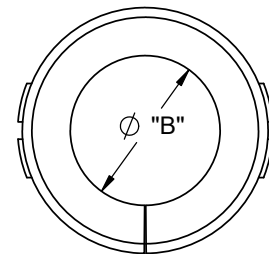
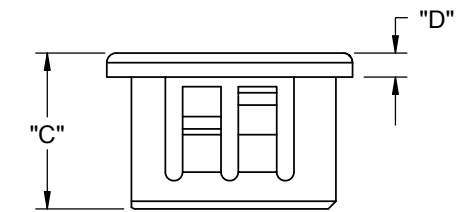
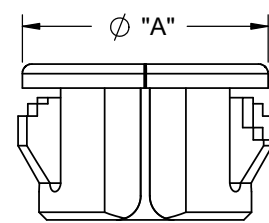


TYPICAL APPLICATION

PART NO.	PANEL THICKNESS RANGE	MOUNTING HOLE DIAMETER	"A" REF	"B" MAX. HOLDING BUNDLE DIA.	"C"±.010 [±0.25]	"D"
PGSB-0609A	.028-.067 [0.7-1.7]	.375±.004 [9.5±0.1]	.450 [11.4]	.260 [6.6]	.26 [6.5]	.051 [1.3]
PGSB-1A	.031-.125 [0.8-3.2]	.375±.004 [9.5±0.1]	.421 [10.7]	.265 [6.7]	.390 [9.9]	.051 [1.3]
PGSB-2A	.031-.125 [0.8-3.2]	.437±.004 [11.1±0.1]	.500 [12.7]	.312 [7.9]	.406 [10.3]	.063 [1.6]
PGSB-1013A	.031-.138 [0.8-3.5]	.512±.004 [13±0.1]	.587 [14.9]	.35 [9]	.41 [10.5]	.059 [1.5]
PGSB-3A	.031-.125 [0.8-3.2]	.562±.004 [14.3±0.1]	.640 [16.3]	.390 [9.9]	.406 [10.3]	.063 [1.6]
PGSB-1216A	.028-.130 [0.7-3.3]	.650±.004 [16.5±0.1]	.734 [18.6]	.48 [12.3]	.39 [10]	.039 [1]
PGSB-1316A	.047-.138 [1.2-3.5]	.630±.004 [16±0.1]	.709 [18]	.41 [10.5]	.41 [10.5]	.063 [1.6]
PGSB-1519A	.047-.130 [1.2-3.3]	.748±.004 [19±0.1]	.811 [20.6]	.57 [14.5]	.43 [11]	.051 [1.3]
PGSB-1822A	.039-.138 [1-3.5]	.866±.004 [22±0.1]	.976 [24.8]	.68 [17.3]	.45 [11.5]	.063 [1.6]
PGSB-4A	.031-.125 [0.8-3.2]	1.000 ^{+0.020} _{-.005} [25.4 ^{+0.5} _{-0.1}]	1.047 [26.6]	.812 [20.6]	.406 [10.3]	.063 [1.6]
PGSB-5A	.031-.125 [0.8-3.2]	1.093 ^{+0.020} _{-.005} [27.8 ^{+0.5} _{-0.1}]	1.156 [29.4]	.875 [22.2]	.406 [10.3]	.063 [1.6]
PGSB-6A	.031-.125 [0.8-3.2]	1.250 ^{+0.020} _{-.005} [31.8 ^{+0.5} _{-0.1}]	1.343 [34.1]	1.046 [26.6]	.406 [10.3]	.063 [1.6]
PGSB-7A	.031-.125 [0.8-3.2]	1.375 ^{+0.020} _{-.005} [34.9 ^{+0.5} _{-0.1}]	1.468 [37.3]	1.171 [29.7]	.406 [10.3]	.063 [1.6]
PGSB-8A	.031-.125 [0.8-3.2]	1.500 ^{+0.020} _{-.005} [38.1 ^{+0.5} _{-0.1}]	1.578 [40.1]	1.250 [31.7]	.421 [10.7]	.063 [1.6]
PGSB-9A	.031-.118 [0.8-3]	.984 ^{+0.012} _{-.005} [25 ^{+0.3} _{-0.1}]	1.039 [26.4]	.803 [20.4]	.406 [10.3]	.063 [1.6]



OPEN



- NOTES:
- MATERIAL: NYLON 6/6 UL 94 V-2 (RMS-01)
-NYLON 6/6 UL 94 V-0 (RMS-19),
AVAILABLE BY SPECIAL ORDER ONLY. TO ORDER, ADD SUFFIX "-V0"
 - COLOR: BLACK.
COLOR WHITE, AVAILABLE BY SPECIAL ORDER ONLY.
 - SOME PARTS MAY APPEAR WITH RICHCO LOGO.

G	SEE CO 200743 FOR CHANGES	SK	02/14/2012
F	SEE CO 200728 FOR CHANGES	SK	10/18/11
E	SEE CO 200335 FOR CHANGES	SK	03/12/09
D	SEE CO 200097 FOR CHANGES	SK	01/04/08
-	SEE ENGINEERING FOR REV A-C	--	----
REV.	DESCRIPTION	ENGR.	DATE

TITLE: SNAP BUSHING OPEN				DWG IN [MM]		FINAL	
CREATED USING SOLIDWORKS		FILE #: PGSB-A	DWN: SK	APP: S.K.		PART #	
TOLERANCES UNLESS NOTED .XX=±.010 .XXX=±.005 FRAC.=±1/64 ANG.=±1°		SHEET: 1 OF 1	SHEET SIZE: B	DT: 06/14/06	CHKD: D.Z.	SEE TABLE	
		RE: RICHCO, INC.	RICHCO, INC. ENG@RICHCO-INC.COM (773) 539-4060				PRINT TYPE CA