

MATERIAL: NYLON 6/6 UL94 V-2 (RMS-01) COLOR: NATURAL	MATERIAL: NYLON 6/6 UL94 V-2 (RMS-01) COLOR: BLACK	HOLE DIAMETER ± .003 [0.08]	TOTAL MATERIAL THICKNESS RANGE	"B" ± .015 [0.4] LEG LENGTH	"C" ± .015 [0.4] HEAD THICKNESS	"D" ± .015 [0.4] HEAD	INSTALLATION TOOL	FIGURE
*PPR-5	*PPR-5B	.189 [4.8]	.039 - .375 [1- 9.5]	.421 [10.7]	.063 [1.6]	.280 [7.1]	PPR-T1	4
PPR-93-7	PPR-93-7B	.197 [5]	.059 - .197 [1.5 - 5]	.291 [7.4]	.079 [2]			6
PPR-9	*PPR-9B	.252 [6.4]	.059 - .252 [1.5 - 6.4]	.366 [9.3]	.185 [4.7]	.437 [11.1]	PPR-T4	5
PPR-1	PPR-1B	.217 [5.5]	.094 - .158 [2.4 - 4]	.449 [11.4]	.079 [2]	.370 [9.4]	PPR-T1	1
N/A	PPR-93-14B	.197 [5]	.118 - .276 [3 - 7]	.433 [11]		.382 [9.7]		6
PPR-2	PPR-2B	.189 [4.8]	.158 - .281 [4 - 7.1]	.382 [9.7]	.059 [1.5]	.429 [10.9]		2
PPR-4	*PPR-4B	.252 [6.4]	.280 - .500 [7.1 - 12.7]	.622 [15.8]	.079 [2]	.469 [11.9]	PPR-T4	3

* AVAILABLE BY SPECIAL ORDER ONLY

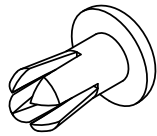


FIG. 1



FIG. 2

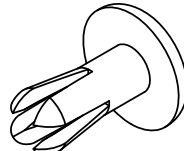


FIG. 3

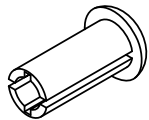


FIG. 4

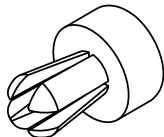


FIG. 5

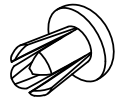
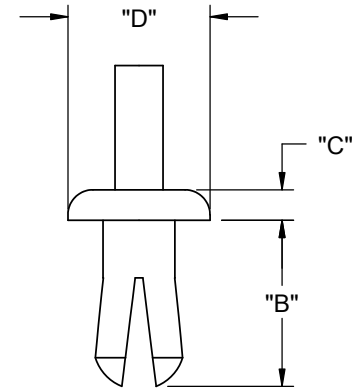


FIG. 6



TITLE: PUSH RIVETS					DWG IN IN [mm]	
CREATED USING SOLIDWORKS	FILE #: PPR-CATALOG	DWN: A.N.	APP: S.K.	FINAL		
TOLERANCES UNLESS NOTED .XX=±.010 .XXX=±.005 FRAC.=±1/64 ANG.=±1°	SHEET: 1 OF 1	SHEET SIZE: A	DT: 11.19.08	CHKD: D.Z.	PART #	PRINT TYPE
RE: RICHCO, INC. --	RICHCO, INC. ENG@RICHCO-INC.COM (773) 539-4060		SEE TABLE		CA	
REV.	DESCRIPTION	ENGR.	DATE			

Q	SEE CO 200674 FOR CHANGES	SK	05.31.11
P	SEE CO 200300 FOR CHANGES	SK	01/05/09
O	SEE CO 200284 FOR CHANGES	SK	11/20/08
-	SEE ENGINEERING FOR REV A-N	--	-----
REV.	DESCRIPTION	ENGR.	DATE