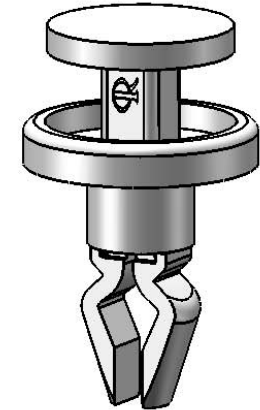
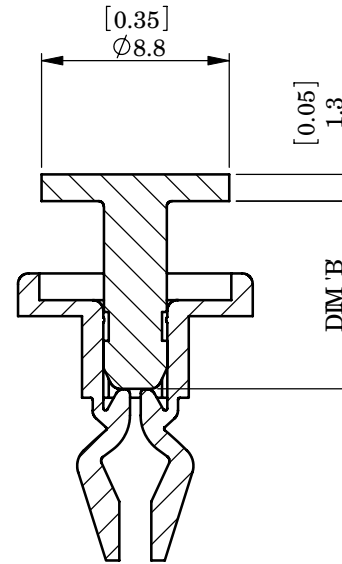
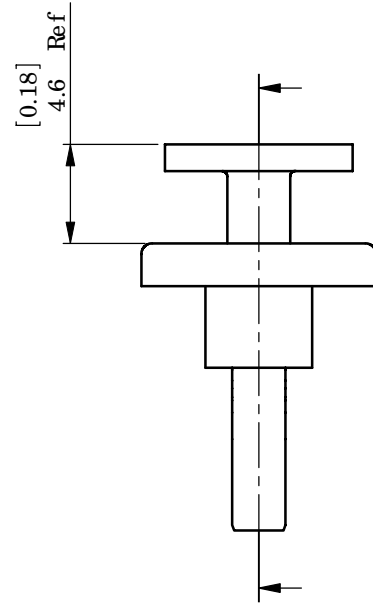
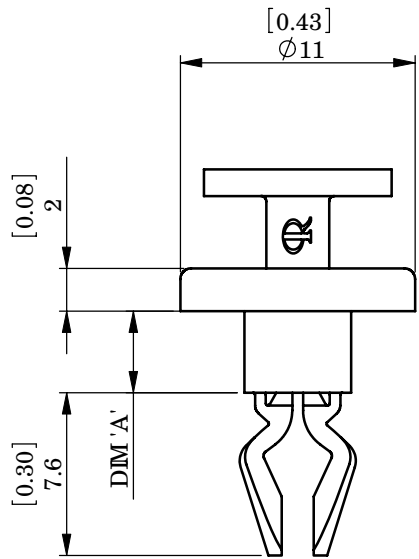


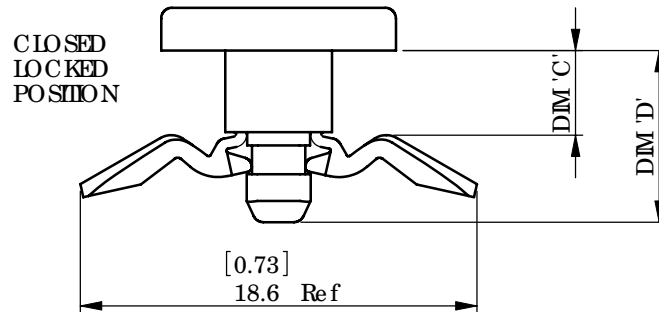
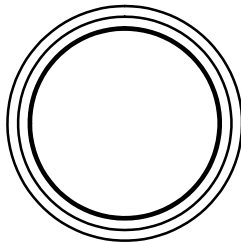
REV.	MODIFICATION.	DATE	DRN
01	Sales Release	26/05/09	TC



AS SUPPLIED - PRE-ASSEMBLED

NOTES

- ALTERNATE UNITS FOR REFERENCE ONLY
- ALSO AVAILABLE IN BLACK - ADD 'BK' TO END PARTNo WHEN ORDERING



INFORMATION CONTAINED IN THIS DOCUMENT IS CONFIDENTIAL TO RICHCO INTERNATIONAL Co., Ltd. AND MAY NOT BE DISCLOSED OR REPRODUCED IN WHOLE OR PART WITHOUT THEIR WRITTEN CONSENT

RICHCO, INC. WWW.RICHCO-INC.COM	ALL DIMENSIONS IN mm GENERAL TOLERANCES ±0.25 UNLESS OTHERWISE STATED 1 DECIMAL PLACE ± 2 DECIMAL PLACES ± ANGULAR ±1°	THIRD ANGLE

Part No	'A' DIM	'B' DIM	'C' DIM Ref	'D' DIM	Total Holding Thickness	Mounting Hole Dia
RFL-1	3.0 [0.12]	8.1 [0.32]	2.7 [0.11]	7.4 [0.29]	2.85 - 3.85 [0.11 - 0.15]	5.5 +/- 0.1 [0.22 +/- 0.004]
RFL-2	3.7 [0.15]	8.8 [0.35]	3.3 [0.13]	8.1 [0.32]	3.55 - 4.55 [0.14 - 0.18]	5.5 +/- 0.1 [0.22 +/- 0.004]

MATERIAL:			COLOUR:		
NYLON 6/6 UL94 V-2 (RMS-01)			NATURAL		
DESCRIPTION:			PARTNo:		
LOCKING RIVET			See Table		
DRG No:		NPR No:	SHEET SIZE		
09-048		FR08-0073 (2005-404)	A4		
DRN	DATE	CHKD	DATE	SCALE	SHEETNo.
TC	08/01/09	TC	26/05/09	NIS	1 OF 1