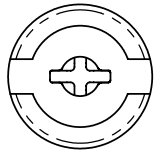
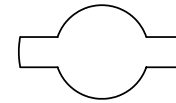
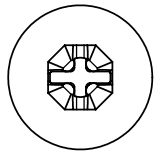
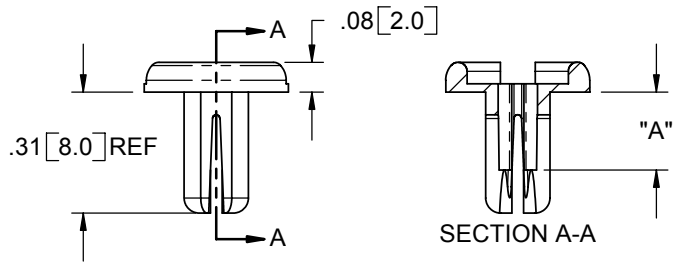


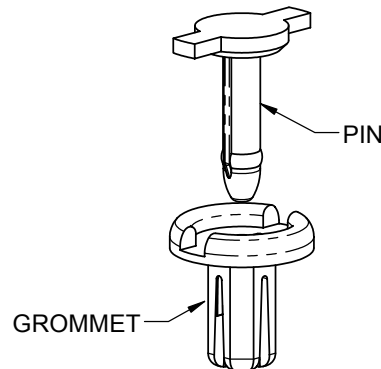
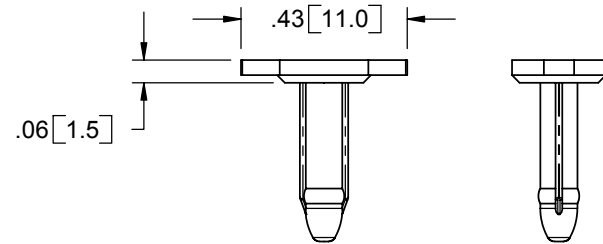
PART NO.	HOLE DIA. RANGE	PANEL THICKNESS	"A" REF
RRR-1	.188-.208 [4.76-5.28]	.059-.138 [1.5-3.5]	.14 [3.6]
RRR-2		.138-.217 [3.5-5.5]	.17 [4.4]



GROMMET



PIN



- NOTES:
1. MATERIAL: NYLON 66/6 (RMS-103)
  2. COLOR: BLACK
  3. RIVET TO FIT IN INDICATED DIAMETER HOLE, OR .177 [4.5] MIN SQUARE HOLE
  4. PIN AND GROMMET ARE SUPPLIED UNASSEMBLED

TITLE: <b>RICHCO REMOVABLE RIVET</b>		DWG IN IN [MM]		FINAL	
CREATED USING SOLIDWORKS	FILE #: RRR-X	DWN: SK	APP: SK	PART #	
TOLERANCES UNLESS NOTED .XX=±.010 .XXX=±.005 FRAC.=±1/64 ANG.=±1°	SHEET: 1 OF 1	SHEET SIZE: A	DT: 06/15/05	CHKD: DJZ	PRINT TYPE
RE: RICHCO, INC.	RICHCO, INC. ENG@RICHCO-INC.COM (773) 539-4060		SEE TABLE		CA

REV.	DESCRIPTION	ENGR.	DATE
B	SEE ECN # 1133 FOR CHANGES	S.J.	03/03/06
A	RELEASED FOR PRODUCTION	SK	06/15/05