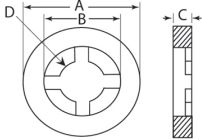


## RW Retaining Washer



- I.D. designed to grip outside of screw shank
- Easily slides on to the screw but is retained by the screw once assembled
- Used in applications requiring pre-assembly of the screw and washer
- Reduces assembly time and cost; no more fumbling for lost washers

Material: UL94 V-2 Nylon 6/6 Color: Natural Standard Pack: 1,000 per bag						
Part No.	Screw Size	Ø"A"	Ø"B"	"C"	Ø"D"	
RW2032A	#2	.203 (5.2)	.115 (2.9)	.032 (.8)	.078 (2)	
RW2062A				.062 (1.6)		
RW4032A	#4	.265 (6.7)	.156 (4)	.032 (.8)	.102 (2.6)	
RW4050A		.250 (6.4)		.050 (1.3)		
RW4062A		.265 (6.7)		.062 (1.6)		
RW4125A		.265 (6.7)		.125 (3.2)		
RW6032A	#6	.328 (8.3)	.198 (5)	.032 (.8)	.128 (3.3)	
RW6062A				.062 (1.6)		
RW7062A	#7	.750 (19.1)	.375 (9.5)	.062 (1.6)	.215 (5.5)	
RW8032A	#8	.390 (9.9)	.235 (6)	.032 (.8)	.152 (3.9)	
RW8045A		.453 (11.5)		.218 (5.5)		.045 (1.1)
RW8062A		.390 (9.9)		.235 (6)		.062 (1.6)
RW10032A	#10	.453 (11.5)	.277 (7)	.032 (.8)	.177 (4.5)	
RW10062A				.062 (1.6)		
RW250032A	1/4	.593 (15.1)	.375 (9.5)	.032 (.8)	.234 (5.9)	
RW250062A				.062 (1.6)		
RW312032A	5/16	.734 (18.6)	.470 (11.9)	.032 (.8)	.292 (7.4)	
RW312062A				.062 (1.6)		
RW375032A	3/8	.890 (22.6)	.564 (14.3)	.032 (.8)	.350 (8.9)	
RW375062A				.062 (1.6)		
RW437032A	7/16	1.031 (26.2)	.570 (14.5)	.032 (.8)	.410 (10.4)	
RW437062A				.062 (1.6)		
RW500032A	1/2	1.125 (28.6)	.690 (17.5)	.032 (.8)	.468 (11.9)	
RW500062A				.062 (1.6)		
RW875062A	7/8	1.343 (34.1)	.940 (23.9)	.062 (1.6)	.825 (21)	