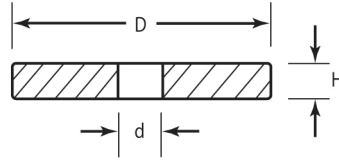


**RWM**  
Metric Retaining Washer



- Designed to grip outside of screw shank
- Easily slides on to the screw but is retained by the screw once assembled
- Ideal for applications requiring pre-assembly of the screw and washer
- Reduces assembly time and cost

Material: UL94 V-2 Nylon 6/6 Color: Natural Standard Pack: 1,000 per bag				
Part No.	Screw Size	Ø“D” mm	Ø“d” mm	“H” mm
RWM050A	M2	5	2.7	1.5
RWM100A	M3	5.5	3.2	2.2
RWM150A	M3	9	3.2	1.5
RWM200A	M4	7	4.3	2.3
RWM250A	M4	12	4.3	1.4
RWM300A	M5	8.5	5.3	2.8
RWM350A	M5	11.5	5.3	1.4
RWM400A	M6	10	6.4	2.8
RWM450A	M6	18	6.4	2
RWM500A	M8	13	8.4	2.8
RWM550A	M10	21	10.5	2.5