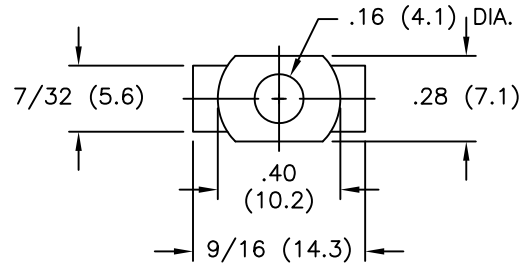
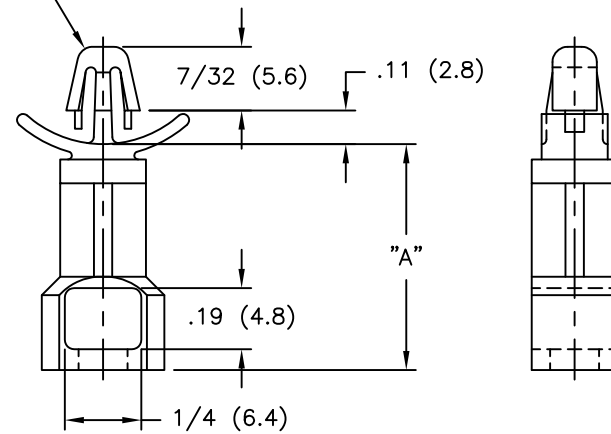


TO SNAP-LOCK IN A $.187 \pm .003$
 (4.75 ± 0.08) DIA. HOLE IN A
 $.031-.078$ $(0.79-1.98)$ PANEL THICKNESS



| PART NO. | "A" |
|--------------|-------------|
| SRLAHS-7-01 | 7/16 (11.1) |
| SRLAHS-8-01 | 1/2 (12.7) |
| SRLAHS-10-01 | 5/8 (15.9) |
| SRLAHS-12-01 | 3/4 (19.1) |
| SRLAHS-14-01 | 7/8 (22.2) |
| SRLAHS-16-01 | 1 (25.4) |

| USE RICHCO RIVET NO. | FOR CHASSIS THICKNESS |
|----------------------|------------------------|
| SR-4050 | .026-.062 (0.7-1.6) |
| SR-4060 | .062-.105 (1.5-2.7) |
| SR-4070 | .105-.145 (2.7-3.7) |
| SR-4080 | .145-.184 (3.7-4.7) |
| SR-4090 | .184-.223 (4.7-5.7) |
| SR-4100 | .223-.263 (5.7-6.7) |
| SR-4120 | .282-.341 (7.2-8.7) |

NOTES:

1. MATERIAL: NYLON 6/6 UL94 V-2 (RMS-01).
 NYLON 6/6 UL94 V-0 (RMS-19) AVAILABLE,
 TO ORDER REPLACE "-01" WITH "-19"
2. COLOR: NATURAL.
3. $.157-.161$ $(4.0-4.1)$ DIA. HOLE IN
 CHASSIS REQUIRED FOR APPLICATION

| | | | | | | | | | |
|---|------------------------------------|-------------|-------------------------|------------------|--|-------|-----------|----|------------|
| TITLE: SNAP RIVET LOCKING ARROWHEAD SUPPORT | | | | DWG IN IN (MM) | | FINAL | | PR | |
| E | SEE CO 200628 FOR CHANGES | SK 03.25.11 | TOLERANCES UNLESS NOTED | FILE # SRLAHS | DWN: P.B. | APP: | PART # | | PRINT TYPE |
| D | SEE CO 200401 FOR CHANGES | SK 09.08.09 | .XX=±.010 | MAT'L: SEE NOTES | DT: 05-03-94 | DT: | SEE TABLE | | CA |
| C | SEE ECN #1253 FOR CHANGES | SK 11.29.06 | .XXX=±.005 | RE: RICHCO, INC. | RICHCO INC. PO BOX 804238, CHICAGO, 60680 | | | | |
| B | SEE ECN #1002 FOR CHANGES | SK 05.11.05 | FRAC=±1/64 | | | | | | |
| A | UPDATED NOTES AND CHANGED FILE NO. | SM 08.20.02 | ANG=±1' | | | | | | |
| REV | DESCRIPTION | ENGR DATE | | | | | | | |