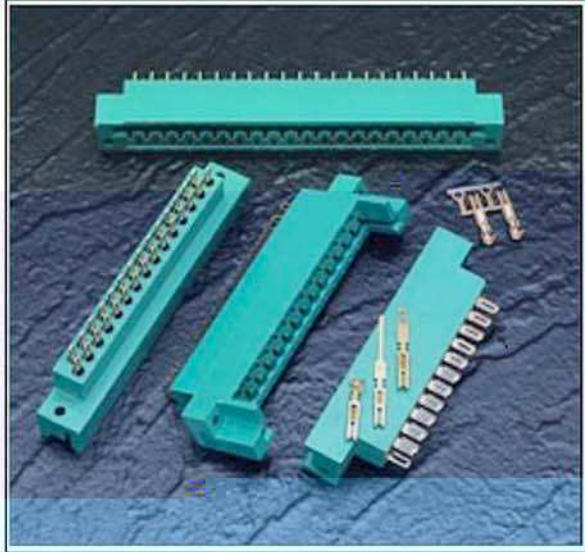


EDAC

SERIES 415/438



FEATURES

.200 (5.08) Contact Spacing x .125 (3.18) Row Spacing with Staggered Grid

Accepts .062 (1.57) or .093 (2.36) Nominal Thickness P.C. Board

Edacon Hermaphroditic Contact Matina Des

Example Part Number 415 - 035 - 500 - 212

Series _____
 Total Number of Contacts _____
 Contact Code _____
 Card Slot Width & Mounting Options _____

Series	Insulator Card Slot Ends
415	Closed Card Slot Ends
438	Open Card Slot Ends

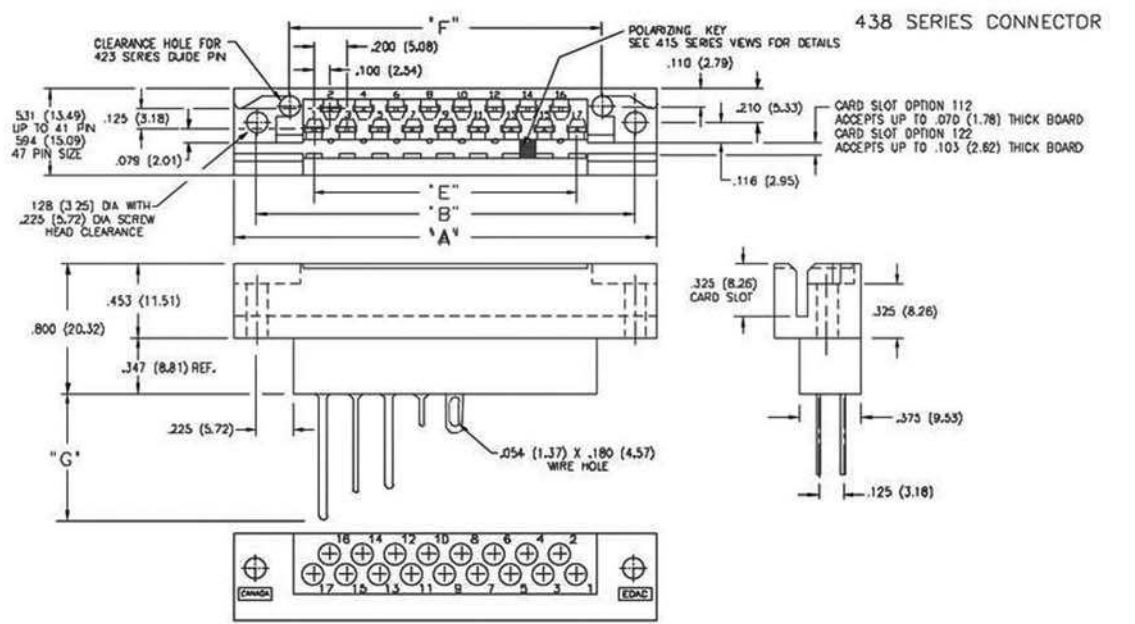
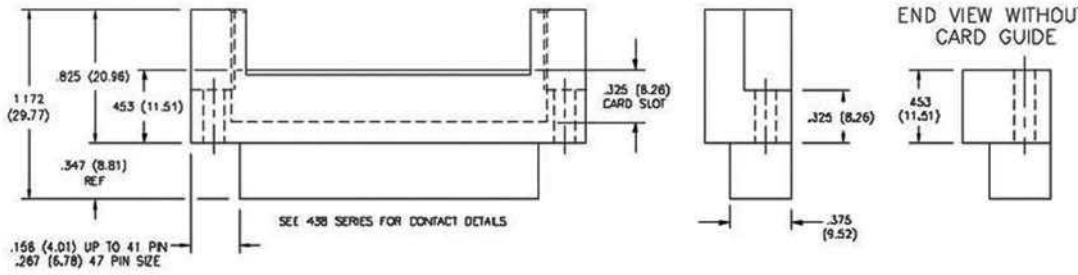
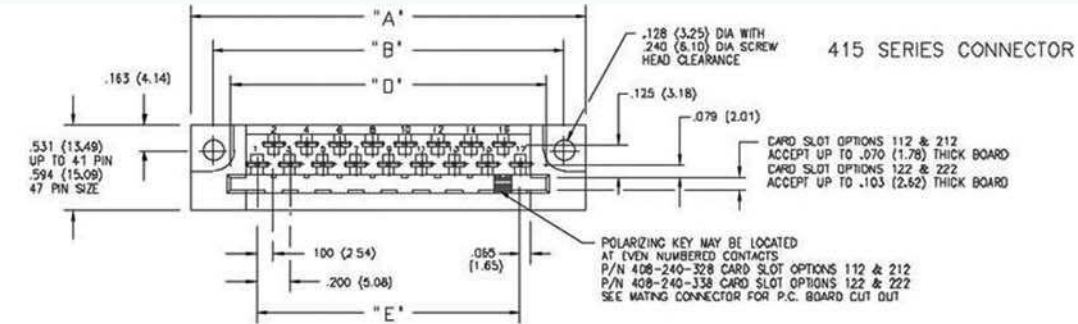
Total Number of Contacts 017, 023, 029, 035, 041 or 47

Contact Code	Description & Tail Size	Tail Length "G"
000	No Contacts Assembled	-
500	Wire Hole .110 x .024 (2.79 x 0.61)	.245 (6.22)
520	P.C. Tail .025 x .024 (0.64 x 0.61)	.215 (5.46)
540	Wire Wrap .050 x .024 (1.27 x 0.61)	.600(15.24)
541	Wire Wrap .026 x .024 (0.66 x 0.61)	.620(15.75)
542	Wire Wrap .050 x .025 (1.27 x 0.61)	.790(20.07)

Card Slot Width and Mounting Options	Description
112 Accepts .062 (1.57) Board	.128 (3.25) Dia. Mounting Holes
122 Accepts .093 (2.36) Board	.128 (3.25) Dia. Mounting Holes
212 Accepts .062 (1.57) Board	.128 (3.25) Dia. Mounting Holes With Card Guides
222 Accepts .093 (2.36) Board	.128 (3.25) Dia Mounting Holes With Card Guides

Ordering Code Notes

1. Crimp Contacts are also available for the 415 and 438 series connectors



NUMBER OF CONTACTS	"A"		"B"		"D"	"E"	"F"
	415	438	415	438	415	415, 438	438
	Inch (mm)	Inch (mm)	Inch (mm)	Inch (mm)	Inch (mm)	Inch (mm)	Inch (mm)
17	2.406 (61.11)	2.570 (65.28)	2.134 (54.20)	2.300 (58.42)	1.920 (48.77)	1.800 (40.64)	1.900 (48.26)
23	3.006 (76.35)	3.170 (80.52)	2.734 (69.44)	2.900 (73.66)	2.520 (64.01)	2.200 (55.88)	2.500 (63.50)
29	3.606 (91.59)	3.770 (95.76)	3.334 (84.68)	3.500 (88.90)	3.120 (79.25)	2.800 (71.12)	3.100 (78.74)
35	4.206 (106.83)	4.370 (111.00)	3.934 (99.92)	4.100 (104.14)	3.720 (94.49)	3.400 (86.36)	3.700 (93.98)
41	4.806 (122.07)	4.970 (126.24)	4.534 (115.18)	4.700 (119.38)	4.320 (109.73)	4.000 (101.60)	4.300 (109.22)
47	5.620 (142.75)	5.570 (141.48)	5.352 (135.94)	5.300 (134.62)	5.030 (127.76)	4.600 (116.84)	4.900 (124.46)