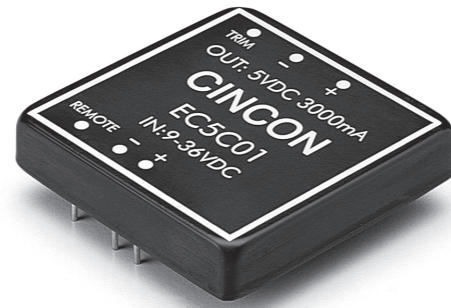


EC5C

S E R I E S



15 WATT 4:1 INPUT RANGE DC-DC CONVERTERS



Features

- 15W Isolated Output
- 2" x 2" Six-Sided Shield Metal Case
- 4 : 1 Input Range
- Regulated Outputs
- Efficiency to 82%
- Remote On/Off Control

MODEL NUMBER	INPUT VOLTAGE	OUTPUT VOLTAGE	OUTPUT CURRENT	INPUT CURRENT		% EFF.	SIZE
				NO LOAD	FULL LOAD		
EC5C01	9-36 VDC	5 VDC	3000 mA	15 mA	810 mA	77	2" x 2"
EC5C02		12 VDC	1250 mA	15 mA	780 mA	80	
EC5C03		15 VDC	1000 mA	15 mA	780 mA	80	
EC5C04		±5 VDC	±1500 mA	20 mA	810 mA	77	
EC5C05		±12 VDC	±625 mA	20 mA	780 mA	80	
EC5C06		±15 VDC	±500 mA	20 mA	780 mA	80	
EC5C07		5/±12 VDC	1500/±310 mA	20 mA	780 mA	80	
EC5C08		5/±15 VDC	1500/±250 mA	20 mA	780 mA	80	
EC5C09		3.3 VDC	3000 mA	15 mA	545 mA	76	
EC5C11	18-72 VDC	5 VDC	3000 mA	10 mA	410 mA	77	2" x 2"
EC5C12		12 VDC	1250 mA	10 mA	390 mA	80	
EC5C13		15 VDC	1000 mA	10 mA	390 mA	80	
EC5C14		±5 VDC	±1500 mA	15 mA	400 mA	79	
EC5C15		±12 VDC	±625 mA	15 mA	380 mA	82	
EC5C16		±15 VDC	±500 mA	15 mA	380 mA	82	
EC5C17		5/±12 VDC	1500/±310 mA	15 mA	380 mA	82	
EC5C18		5/±15 VDC	1500/±250 mA	15 mA	380 mA	82	
EC5C19		3.3 VDC	3000 mA	10 mA	270 mA	76	

NOTE: 1. Nominal Input Voltage 24 or 48 VDC

Specifications

INPUT SPECIFICATIONS:

Input Voltage Range.....	24V.....	9-36V
	48V.....	18-72V
Input Filter.....		Pi Type

OUTPUT SPECIFICATIONS:

Voltage Accuracy		
Single Output.....		±1.0% max.
Dual +Output.....		±1.0% max.
-Output.....		±3.0% max.
Triple, 5V.....		
		±2.0% max.
12V/15V.....		
		±3.0% max.
Voltage Balance (Dual).....		
		±1.0% max.
Transient Response:		
Single, 25% Step Load Change.....		
		<500µ sec.
Dual-FL-1/2L ±1% Error Band.....		
		<500µ sec.
External Trim Adj. Range.....		
		±10%.
Ripple & Noise, 20MHz BW.....		
		10mV RMS, max. 75mV p-p max.
Temperature Coefficient.....		
		± 0.02%/°C
Short Circuit Protection.....		
		Continuous
Line Regulation ¹ , Single/Dual.....		
		±0.2% max.
Triple.....		
		±1.0% max.
Load Regulation ² , Single/Dual.....		
		±1.0% max.
Triple.....		
		±5.0% max.

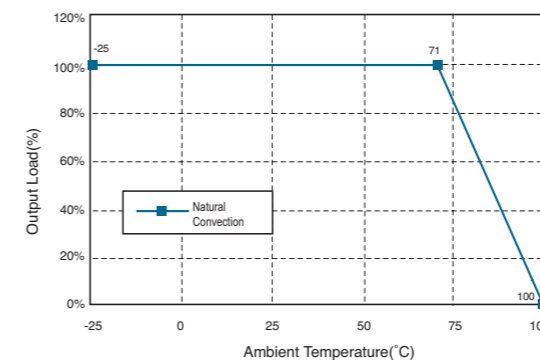
GENERAL SPECIFICATIONS:

Efficiency.....See Table
 Isolation Voltage.....500 VDC min.
 Isolation Resistance.....10⁹ohms
 Switching Frequency.....300KHz, typ.
 Case Grounding.....Connected to Output Common
 Operating Ambient Temperature Range -25°C to +71°C
 De-rating, Above 71°C Linearly to Zero power at 100°C
 Case Temperature³100°C max
 CoolingNatural Convection
 Storage Temperature Range.....-55°C to + 105°C
 EMI/RFI.....Six-Sided Continuous Shield
 Dimensions.....2.00 x 2.00 x 0.40 inches
 (50.8 x 50.8 x 10.2 mm)
 Case Material.....Black Coated Copper with
 Non-Conductive Base
 Weight.....59g

NOTE:

1. Measured From High Line to Low Line
2. Measured From Full Load to 1/4 Load
3. Maximum case temperature under any operating condition should not exceed 100°C.

EC5C Series Derating Curve

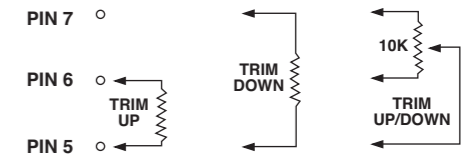


Remote On/Off Control

Logic Compatibility	CMOS or Open Collector TTL
Ec-On	>+5.5 VDC or Open Circuit
Ec-Off	<1.8 VDC
Shutdown Idle Current	10mA
Control Common	Referenced to Input Minus

External Output Trimming

Output may optionally be externally trimmed (±10%) with a fixed resistor or an external trimpot as shown.



PIN CONNECTION

Pin	Single	Dual	Tripe
1	Remote On/Off Control		
2	No Pin	No Pin	No Pin
3	-Vin	-Vin	-Vin
4	+Vin	+Vin	+Vin
5	Trim	Trim	-Aux. Out
6	-Vout	-Vout	Common
7	+Vout	Common	+5V out
8	No Pin	+Vout	+Aux. Out

TRIPLE OUTPUT LOADING TABLE (1)

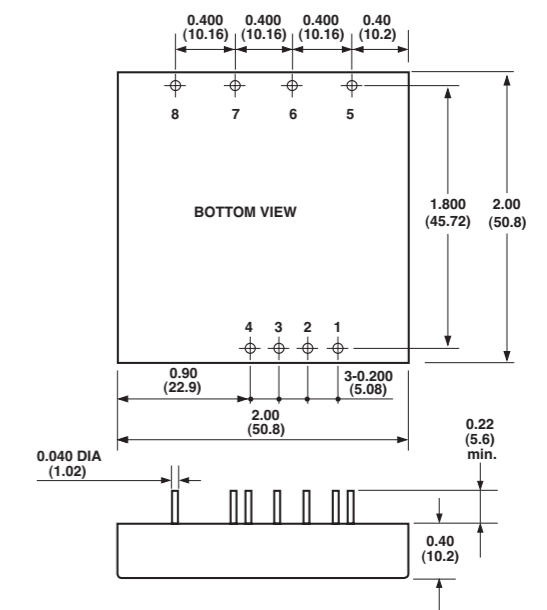
Output (Pin No.)	Voltage	Amperes	
		Min. (2)	Nom.
7	+5	0.25	1.5
8 & 5	+12 & -12	0.10	0.31
8 & 5	+15 & -15	0.10	0.25

NOTE:

1. Maximum total power from all outputs is limited to 15 watts but no output should exceed its maximum current.
2. Minimum current on each output is required to maintain specified regulation.

CASE C

All Dimensions In Inches(mm)
 Tolerance Inches: .xx= ±.04, .xxx= ±.010
 Millimeters: .x= ±1.0, .xx= ±0.25



All Specifications Typical At Nominal Line, Full Load and 25°C Unless Otherwise Noted.