

# CHB75-Dual

S E R I E S

## 75 WATT DUAL OUTPUTS DC-DC CONVERTERS



### Features

- 75W Isolated Dual Output
- Half Brick Package
- Regulated Outputs
- Efficiency to 84%
- 400KHz Switching Frequency
- Total Output Power 75W with 15A Maximum Per Channel
- Continuous Short Circuit Protection

MODEL NUMBER	INPUT VOLTAGE	OUTPUT VOLTAGE	OUTPUT CURRENT		INPUT CURRENT		% EFF.	SIZE
			MIN.	MAX.	NO LOAD	FULL LOAD		
CHB75-24D05-3V3	18-36VDC	Vo1=5V Vo2=3.3V	0A 0A	15A 15A	50 mA	3765 mA	83% (2)	Half-Brick
CHB75-24D05-2V5	18-36VDC	Vo1=5V Vo2=2.5V	0A 0A	15A 15A	50 mA	3765 mA	83% (2)	Half-Brick
CHB75-48D05-3V3	36-75VDC	Vo1=5V Vo2=3.3V	0A 0A	15A 15A	30 mA	1860 mA	84% (2)	Half-Brick
CHB75-48D05-2V5	36-75VDC	Vo1=5V Vo2=2.5V	0A 0A	15A 15A	30 mA	1860 mA	84% (2)	Half-Brick

NOTE: 1. Nominal Input Voltage 12, 24 or 48 VDC

### Specifications

#### INPUT SPECIFICATIONS:

Input Voltage Range.....24V.....18-36V  
 48V..... 36-75V  
 Undervoltage lockout .....24Vin power up.....1.7V  
 power down .....1.5V  
 48Vin power up ..... 3.4V  
 power down ..... 32.5V  
 Positive Logic Remote ON/OFF<sup>4,5</sup>  
 Input Filter ..... PI Type

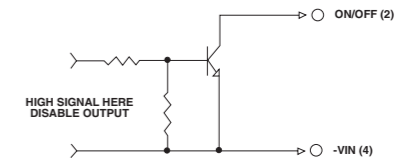
#### OUTPUT SPECIFICATIONS:

Voltage Accuracy : .....±2% max.  
 Transient Response :25% Step Load Change.....<500µ sec.  
 External Trim Adj. Range .....±5%  
 Ripple & Noise, 20MHz BW<sup>6</sup>  
 3.3V & 5V & 2.5V..... 40mV RMS., max.  
 100mV pk-pk, max.  
 Temperature Coefficient..... ±0.03%/°C  
 Short Circuit Protection..... Continuous  
 Line Regulation<sup>1</sup> .....±0.2% max.  
 Load Regulation<sup>2</sup> .....±0.5% max.  
 Over Voltage Protection trip Range, % Vo nom.....115-140%  
 Current Limit .....110% ~140% Nominal Output

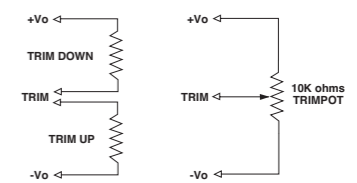
#### GENERAL SPECIFICATIONS:

Efficiency.....See Table  
 Isolation Voltage .....Input/Output..... 1500VDC min.  
 Input/Case..... 1500VDC min.  
 Output/Case.....1500VDC min.  
 Isolation Resistance .....10<sup>7</sup> ohm min.  
 Switching Frequency .....400KHz, Typ.  
 Operating Case Temperature .....-40°C to 100°C  
 Storage Temperature .....-55°C to +105°C  
 Thermal Shutdown, Case Temp. ....100°C Typ.  
 Dimensions .....2.28x2.40x0.52 inches  
 (57.9x61.0x13.2 mm)  
 Case Material.....Aluminum Baseplate with Plastic Case  
 Weight.....108g

### Remote On/Off Control



### External Output Trim



### PIN CONNECTION

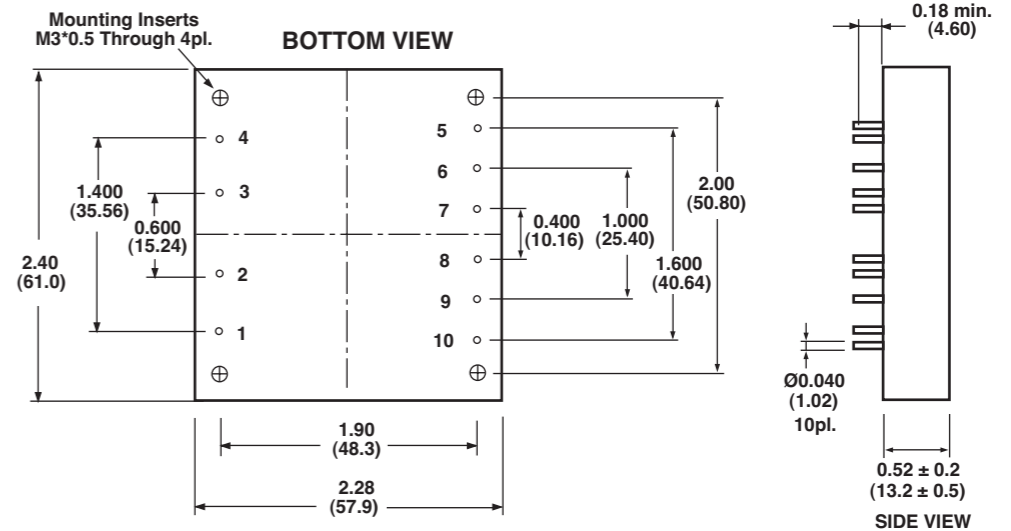
Pin	Function
1	+Vin
2	ON/OFF
3	CASE
4	-V in
5	+Vo2
6	-Vo2
7	Vo2 Trim
8	+Vo1
9	-Vo1
10	Vo1 Trim

#### NOTE:

1. Measured From High Line to Low Line.
2. Measured From Full Load to Min. Load.
3. Measured with Output Current on Output1 (Vo1)
4. Logic Compatibility ..... Open Collector Ref. to -Input  
 Module ON ..... Open Circuit  
 Module OFF ..... < 0.8Vdc
5. Suffix "N" to the Model Number with Negative Logic Remote ON/OFF.
6. The Output Noise is Measured with 10 µF Tantalum and 1 µF Ceramic Capacitor across output.

### CASE HB

All Dimensions In Inches(mm)  
 Tolerance Inches: x.xx= ±0.02, x.xxx= ±0.010  
 Millimeters: x.x= ±0.5, x.xx= ±0.25



All Specifications Typical At Nominal Line, Full Load and 25°C Unless Otherwise Noted.