

Surface Mount Bandpass Filter

SXBP-100+

50Ω 87 to 117 MHz

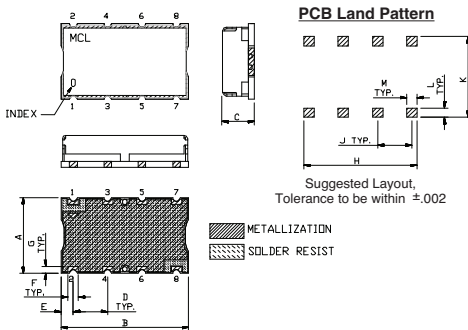
Maximum Ratings

Operating Temperature	-40°C to 85°C
Storage Temperature	-55°C to 100°C
RF Power Input	0.25W Max.
Permanent damage may occur if any of these limits are exceeded.	

Pin Connections

INPUT	1
OUTPUT	8
GROUND	2, 3, 4, 5, 6, 7

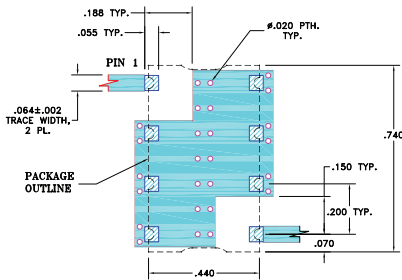
Outline Drawing



Outline Dimensions (inch/mm)

A	B	C	D	E	F			
.44	.74	.27	.200	.07	.060			
11.18	18.80	6.86	5.08	1.78	1.52			
G	H	J	K	L	M	wt.		
.040	.660	.200	.470	.055	.060	grams		
1.02	16.76	5.08	11.94	1.40	1.52	3.0		

Demo Board MCL P/N: TB-368 Suggested PCB Layout (PL-230)



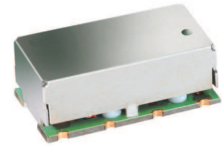
- NOTE:
- TRACE WIDTH IS SHOWN FOR FR4 WITH DIELECTRIC THICKNESS: .025"±.002". COPPER: 1/2 OZ. EACH SIDE. FOR OTHER MATERIALS TRACE WIDTH MAY NEED TO BE MODIFIED.
 - BOTTOM SIDE OF THE PCB IS CONTINUOUS GROUND PLANE.
- DENOTES PCB COPPER LAYOUT WITH SMOBC (SOLDER MASK OVER BARE COPPER)
 - DENOTES COPPER LAND PATTERN FREE OF SOLDER MASK

Features

- high rejection
- good VSWR, 1.3:1 typ @ passband
- shielded case
- aqueous washable

Applications

- radio
- test equipment
- receivers / transmitters
- harmonic rejection



CASE STYLE: HF1139
PRICE: \$15.95 ea. QTY (1-9)

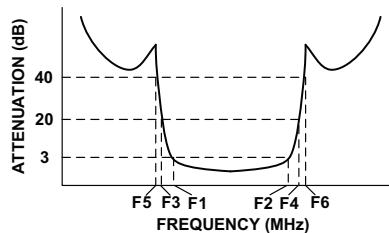
+ RoHS compliant in accordance with EU Directive (2002/95/EC)

The +Suffix has been added in order to identify RoHS Compliance. See our web site for RoHS Compliance methodologies and qualifications.

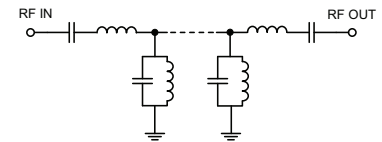
Bandpass Filter Electrical Specifications (T_{AMB} = 25°C)

CENTER FREQ. (MHz)	PASSBAND (MHz) (Loss < 3dB)	STOPBANDS (MHz)				VSWR (:1)		
		Loss > 20dB		Loss > 40dB		Passband		Stopband
F _c	F ₁ - F ₂	F ₃	F ₄	F ₅	F ₆	Typ.	Max.	Typ.
100	87 - 117	66	143	55	175 - 1500	1.3	1.7	20

Typical Frequency Response

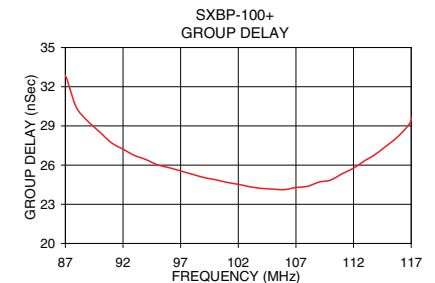
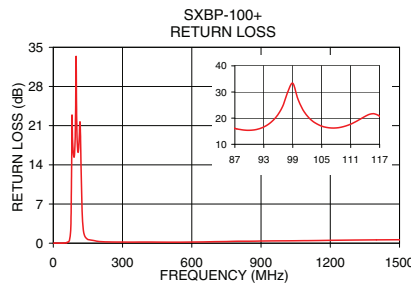
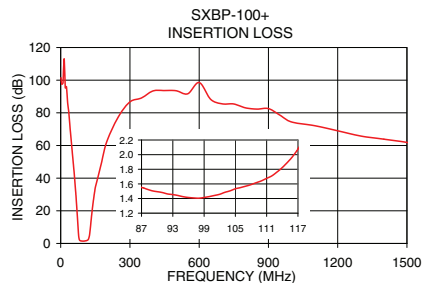


Functional Schematic



Typical Performance Data at 25°C

Frequency (MHz)	Insertion Loss (dB)		Return Loss (dB)	Frequency (MHz)	Group Delay (nSec)
	\bar{x}	σ			
1	101.48	3.67	0.01	87	32.84
55	48.64	0.58	0.07	88	30.34
66	29.62	0.77	0.27	89	29.32
70	21.58	0.91	0.49	90	28.52
75	10.14	1.07	2.15	92	27.22
78	4.46	0.73	7.86	94	26.42
80	2.65	0.36	17.52	96	25.80
87	1.55	0.05	16.07	98	25.30
95	1.42	0.03	19.31	100	24.88
100	1.43	0.04	27.69	102	24.53
110	1.64	0.05	17.02	104	24.22
117	2.08	0.07	20.71	106	24.12
125	5.20	0.70	5.54	108	24.37
130	11.60	0.86	2.39	110	24.85
140	24.55	0.66	1.02	111	25.33
143	27.66	0.62	0.89	112	25.77
175	48.35	0.58	0.48	113	26.35
1500	61.87	0.63	0.62	117	29.46



P.O. Box 350166, Brooklyn, New York 11235-0003 (718) 934-4500 Fax (718) 332-4661 The Design Engineers Search Engine Provides ACTUAL Data Instantly at minicircuits.com

Notes: 1. Performance and quality attributes and conditions not expressly stated in this specification sheet are intended to be excluded and do not form a part of this specification sheet. 2. Electrical specifications and performance data contained herein are based on Mini-Circuit's applicable established test performance criteria and measurement instructions. 3. The parts covered by this specification sheet are subject to Mini-Circuits standard limited warranty and terms and conditions (collectively, "Standard Terms"); Purchasers of this part are entitled to the rights and benefits contained therein. For a full statement of the Standard Terms and the exclusive rights and remedies thereunder, please visit Mini-Circuits' website at www.minicircuits.com/MCLStore/terms.jsp.

For detailed performance specs & shopping online see web site

REV. OR
M121548
EDR-9427AUF1
SXBP-100+
URJ/RAV
110815
Page 1 of 1