

Surface Mount Bandpass Filter

SXBP-157+

50Ω 150 to 164 MHz

Maximum Ratings

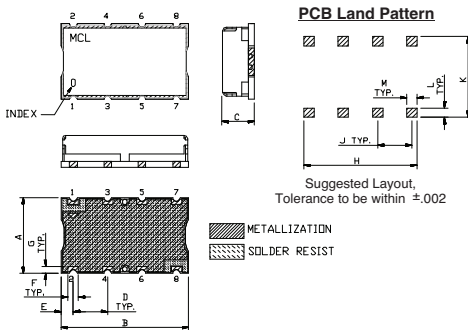
Operating Temperature	-40°C to 85°C
Storage Temperature	-55°C to 100°C
RF Power Input	0.5W Max.

Permanent damage may occur if any of these limits are exceeded.

Pin Connections

INPUT	1
OUTPUT	8
GROUND	2, 3, 4, 5, 6, 7

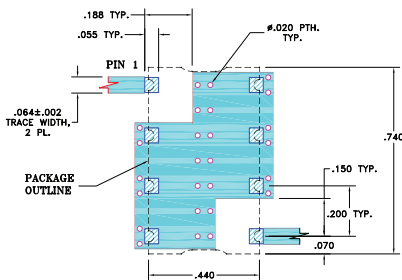
Outline Drawing



Outline Dimensions (inch/mm)

	A	B	C	D	E	F	
	.44	.74	.27	.200	.07	.060	
	11.18	18.80	6.86	5.08	1.78	1.52	
	G	H	J	K	L	M	wt.
	.040	.660	.200	.470	.055	.060	grams
	1.02	16.76	5.08	11.94	1.40	1.52	3.0

Demo Board MCL P/N: TB-368 Suggested PCB Layout (PL-230)

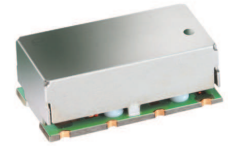


Features

- excellent rejection
- good VSWR, 1.2:1 typ @ passband
- aqueous washable

Applications

- receivers / transmitters
- professional mobile radio / public access mobile radio (PMR/ PAMR)
- CDMA base station



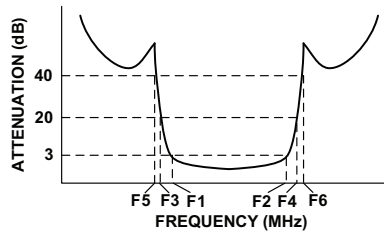
CASE STYLE: HF1139
PRICE: \$15.95 ea. QTY (1-9)

+RoHS Compliant
The +Suffix identifies RoHS Compliance. See our web site for RoHS Compliance methodologies and qualifications

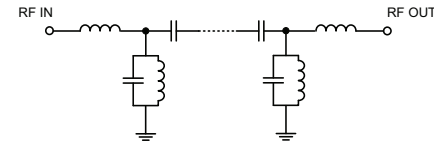
Bandpass Filter Electrical Specifications (T_{AMB} = 25°C)

CENTER FREQ. (MHz)	PASSBAND (MHz) (Loss < 3dB)	STOPBANDS (MHz)				VSWR (:1)		
		Loss > 20dB		Loss > 40dB		Passband		Stopband
F _c	F ₁ - F ₂	F ₃	F ₄	F ₅	F ₆	Typ.	Max.	Typ.
157	150 - 164	131	187	115	215 - 2000	1.2	1.7	20

Typical Frequency Response

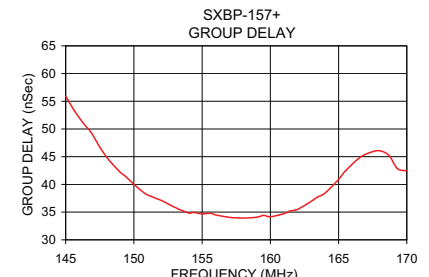
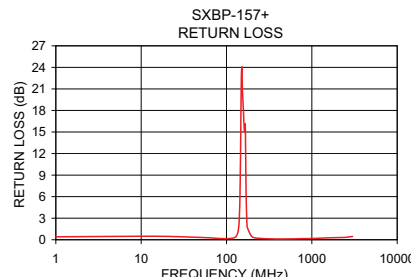
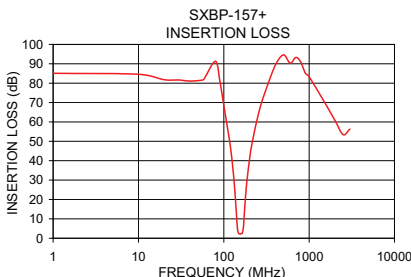


Functional Schematic



Typical Performance Data at 25°C

Frequency (MHz)	Insertion Loss (dB)		Return Loss (dB)	Frequency (MHz)	Group Delay (nSec)
	\bar{x}	σ			
1.0	85.08	2.10	0.41	147.5	47.32
115.0	52.32	0.36	0.19	149.0	43.31
131.0	30.98	0.35	0.54	150.0	40.88
139.0	15.86	0.38	1.77	151.0	39.12
143.0	7.41	0.39	4.92	152.5	36.95
146.0	3.62	0.21	11.89	154.0	35.47
150.0	2.44	0.03	24.24	155.0	34.82
157.0	2.22	0.03	18.56	156.0	34.59
164.0	2.53	0.04	15.44	157.0	34.33
169.0	4.80	0.31	7.92	159.0	33.98
172.0	9.17	0.42	3.23	160.0	33.89
178.0	18.91	0.32	1.19	161.4	34.36
187.0	29.82	0.22	0.64	163.0	35.53
215.0	49.38	0.19	0.31	163.4	36.37
750.0	93.83	3.88	0.13	164.0	36.97
1000.0	83.28	1.86	0.18	165.4	40.43
1500.0	70.47	0.42	0.26	166.7	43.96
2000.0	60.88	0.91	0.30	168.0	46.31



Mini-Circuits®
ISO 9001 ISO 14001 AS 9100 CERTIFIED
IF/RF MICROWAVE COMPONENTS

For detailed performance specs & shopping online see web site

P.O. Box 350166, Brooklyn, New York 11235-0003 (718) 934-4500 Fax (718) 332-4661 The Design Engineers Search Engine Provides ACTUAL Data Instantly at minicircuits.com

Notes: 1. Performance and quality attributes and conditions not expressly stated in this specification sheet are intended to be excluded and do not form a part of this specification sheet. 2. Electrical specifications and performance data contained herein are based on Mini-Circuits' applicable established test performance criteria and measurement instructions. 3. The parts covered by this specification sheet are subject to Mini-Circuits standard limited warranty and terms and conditions (collectively, "Standard Terms"); Purchasers of this part are entitled to the rights and benefits contained therein. For a full statement of the Standard Terms and the exclusive rights and remedies thereunder, please visit Mini-Circuits' website at www.minicircuits.com/MCLStore/terms.jsp.

REV. A
M117530
EDR-8062AU
SXBP-157+
URJ/RAV
110815
Page 1 of 1