

Surface Mount Bandpass Filter

SXBP-425+

50 410 to 440 MHz

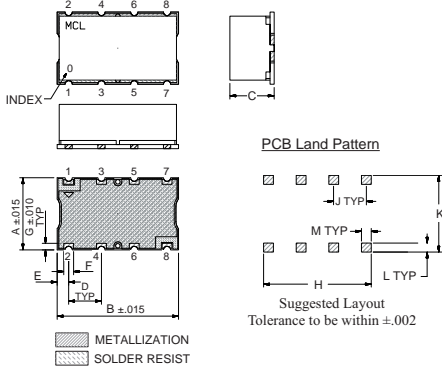
Maximum Ratings

Operating Temperature	-40°C to 85°C
Storage Temperature	-55°C to 100°C
RF Power Input	0.5W Max

Pin Connections

INPUT	1
OUTPUT	8
GROUND	2, 3, 4, 5, 6, 7

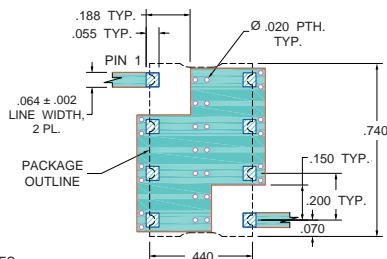
Outline Drawing



Outline Dimensions (inch mm)

A	B	C	D	E	F	
.440	.740	.270	.200	0.70	0.60	
11.18	18.80	6.86	5.08	1.78	1.52	
G	H	J	K	L	M	wt.
.040	.660	.200	.470	.055	.060	grams
1.02	16.76	5.08	11.94	1.40	1.52	3

Demo Board MCL P/N: TB-368 Suggested PCB Layout (PL-230)

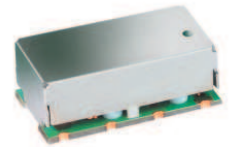


Features

- Linear Phase, up to ±6 deg typical @ Fc ± 15 MHz
- Good VSWR, 1.3:1 typical in Passband
- High rejection
- Shielded case
- Aqueous washable

Applications

- Industrial Microwave and RF
- Receivers / Transmitters
- Harmonic rejection



CASE STYLE: HF1139
PRICE: \$17.95 ea. QTY (1-9)

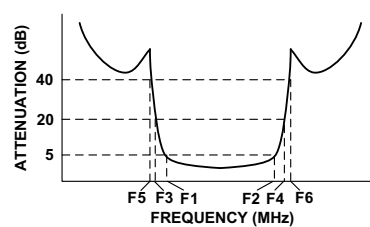
+ RoHS compliant in accordance with EU Directive (2002/95/EC)

The +Suffix has been added in order to identify RoHS Compliance. See our web site for RoHS Compliance methodologies and qualifications.

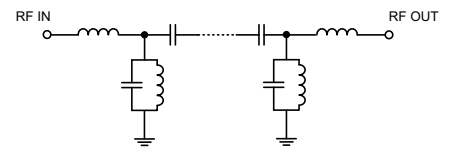
Bandpass Filter Electrical Specifications (T_{AMB} = 25°C)

CENTER FREQ. (MHz)	PASSBAND (MHz) (Loss < 5dB)	STOPBANDS (MHz)				MAXIMUM DEVIATION FROM LINEAR PHASE (deg.)	VSWR (:1)		
		Loss > 20dB		Loss > 40dB			Passband		Stopband
Fc	F1 - F2	F3	F4	F5	F6	Fc ± 15MHz	Typ.	Max.	Typ.
425	410-440	385	470	360	510-2500	±11	1.3	1.85	20

Typical Frequency Response

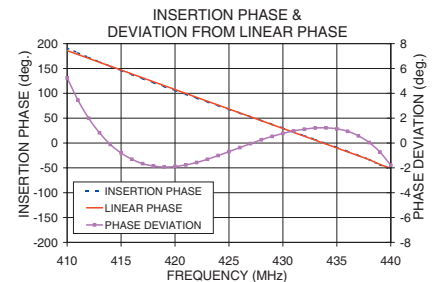
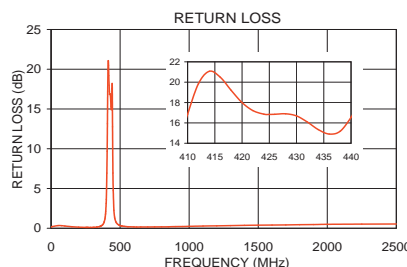


Functional Schematic



Typical Performance Data at 25°C

Frequency (MHz)	Insertion Loss (dB)		Return Loss (dB)	Frequency (MHz)	Deviation from Linear Phase (deg.)
	\bar{x}	σ			
0.5	81.76	3.40	0.17	410	5.24
100.0	68.09	3.05	0.28	412	1.99
360.0	47.06	0.36	0.27	414	-0.11
385.0	27.82	0.65	0.82	416	-1.31
395.0	16.90	1.00	1.90	418	-1.85
402.0	8.63	1.16	4.96	420	-1.89
406.0	5.40	0.97	9.68	422	-1.57
410.0	3.68	0.11	16.84	424	-1.01
425.0	2.91	0.07	16.83	425	-0.69
440.0	3.65	0.13	16.55	427	-0.05
445.0	5.32	0.42	12.75	429	0.53
450.0	9.56	0.74	4.75	430	0.77
460.0	19.96	0.67	1.39	432	1.11
470.0	28.48	0.54	0.78	434	1.22
510.0	49.71	0.45	0.29	436	0.94
1000.0	83.27	5.77	0.24	438	0.04
2000.0	54.71	2.24	0.49	439	-0.73
2500.0	50.52	1.55	0.54	440	-1.79



Mini-Circuits®
ISO 9001 ISO 14001 AS 9100 CERTIFIED
IF/RF MICROWAVE COMPONENTS

For detailed performance specs & shopping online see web site

P.O. Box 350166, Brooklyn, New York 11235-0003 (718) 934-4500 Fax (718) 332-4661 The Design Engineers Search Engine Provides ACTUAL Data Instantly at minicircuits.com

Notes: 1. Performance and quality attributes and conditions not expressly stated in this specification sheet are intended to be excluded and do not form a part of this specification sheet. 2. Electrical specifications and performance data contained herein are based on Mini-Circuit's applicable established test performance criteria and measurement instructions. 3. The parts covered by this specification sheet are subject to Mini-Circuits standard limited warranty and terms and conditions (collectively, "Standard Terms"); Purchasers of this part are entitled to the rights and benefits contained therein. For a full statement of the Standard Terms and the exclusive rights and remedies thereunder, please visit Mini-Circuits' website at www.minicircuits.com/MCLStore/terms.jsp.

REV. A
M129961
EDR-9256UF1
SXBP-425+
UR/J/RAV
110721
Page 1 of 1

CHECK PRINT (FOR INTERNAL USE ONLY)			
MODEL: SXBP-425+ (Rev# A)			
	NAME	SIGNATURE	DATE
Prepared by	Anbu	Anbu	21 JUL 2011
Reviewed by	Ambilee	Ambilee	21 JUL 2011
Approved by	Giri	Ambilee for Giri	21 JUL 2011



For detailed performance specs
& shopping online see web site

P.O. Box 350166, Brooklyn, New York 11235-0003 (718) 934-4500 Fax (718) 332-4661 The Design Engineers Search Engine  Provides ACTUAL Data Instantly at minicircuits.com

IF/RF MICROWAVE COMPONENTS

Notes: 1. Performance and quality attributes and conditions not expressly stated in this specification sheet are intended to be excluded and do not form a part of this specification sheet. 2. Electrical specifications and performance data contained herein are based on Mini-Circuit's applicable established test performance criteria and measurement instructions. 3. The parts covered by this specification sheet are subject to Mini-Circuits standard limited warranty and terms and conditions (collectively, "Standard Terms"); Purchasers of this part are entitled to the rights and benefits contained therein. For a full statement of the Standard Terms and the exclusive rights and remedies thereunder, please visit Mini-Circuits' website at www.minicircuits.com/MCLStore/terms.jsp.