

Low Pass Filter

RLP-900+

50Ω DC to 900 MHz

Maximum Ratings

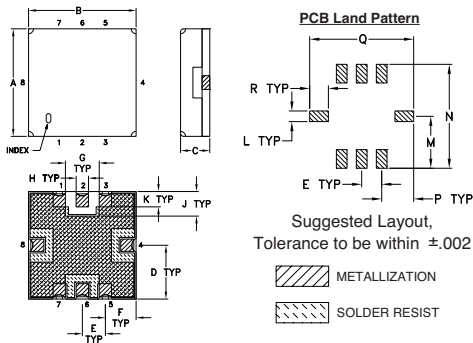
Operating Temperature	-40°C to 85°C
Storage Temperature	-55°C to 100°C
RF Power Input	0.5W Max

Permanent damage may occur if any of these limits are exceeded.

Pin Connections

RF IN	2
RF OUT	6
GROUND	1, 3, 4, 5, 7, 8

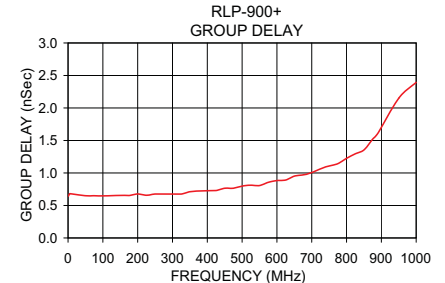
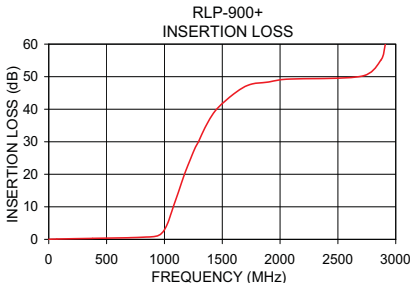
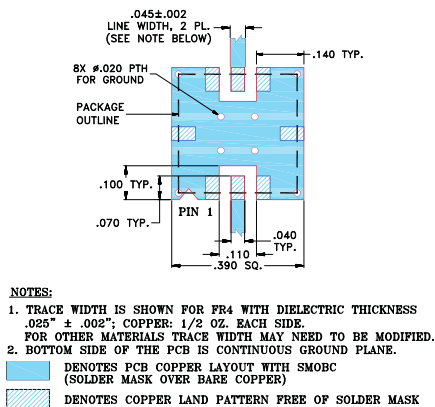
Outline Drawing



Outline Dimensions (inch/mm)

A	B	C	D	E	F	G	H	J
.350	.350	.100	.175	.075	.100	.110	.040	.080
8.89	8.89	2.54	4.45	1.93	2.54	2.79	1.02	2.03
K	L	M	N	P	Q	R	wt.	
.050	.040	.195	.390	.120	.390	.070	grams	
1.27	1.02	4.95	9.91	3.05	9.91	1.78	0.25	

Demo Board MCL P/N: TB-332 Suggested PCB Layout (PL-176)



Features

- high rejection
- sharp insertion loss roll off
- excellent VSWR, 1.2:1 typ. @ passband
- aqueous washable

Applications

- wireless communications
- receivers / transmitters



CASE STYLE: GP731
PRICE: \$7.95 ea. QTY (10)

+RoHS Compliant

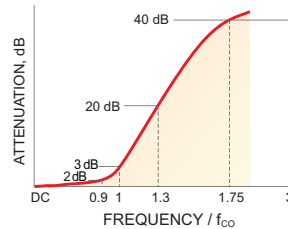
The +Suffix identifies RoHS Compliance. See our web site for RoHS Compliance methodologies and qualifications

Available Tape and Reel at no extra cost	
Reel Size	Devices/Reel
7"	10, 20, 50, 100, 200
13"	500, 1000

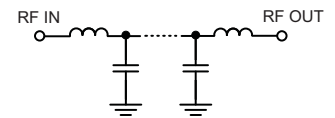
Low Pass Filter Electrical Specifications (T_{AMB} = 25°C)

PASSBAND (MHz)	f _{co} , MHz Nom.	STOPBAND (MHz)		VSWR (:1)	
		(Loss > 20dB)	(Loss > 40dB)	Passband Typ.	Stopband Typ.
DC - 900	1000	1300 - 1750	1750 - 2900	1.2	20

Typical Frequency Response



Functional Schematic



Typical Performance Data at 25°C

Frequency (MHz)	Insertion Loss (dB)		Return Loss (dB)	Frequency (MHz)	Group Delay (nSec)
	\bar{x}	σ			
0.5	0.02	0.00	51.49	1.0	0.64
50.0	0.08	0.00	41.46	50.0	0.65
250.0	0.21	0.01	31.46	100.0	0.65
400.0	0.31	0.01	23.11	150.0	0.66
600.0	0.44	0.01	21.51	200.0	0.68
800.0	0.62	0.02	23.69	300.0	0.68
900.0	0.82	0.02	30.02	350.0	0.71
960.0	1.40	0.08	13.20	400.0	0.73
1000.0	2.94	0.25	6.03	450.0	0.77
1040.0	6.07	0.38	2.71	500.0	0.80
1100.0	12.23	0.42	1.08	550.0	0.81
1200.0	22.10	0.36	0.54	650.0	0.95
1300.0	30.42	0.35	0.38	700.0	1.01
1400.0	36.91	0.35	0.32	750.0	1.11
1750.0	47.65	0.37	0.26	800.0	1.23
2000.0	48.61	0.31	0.26	850.0	1.35
2500.0	49.49	0.52	0.28	900.0	1.65
2900.0	58.98	3.62	0.33	1000.0	2.39



For detailed performance specs & shopping online see web site

P.O. Box 350166, Brooklyn, New York 11235-0003 (718) 934-4500 Fax (718) 332-4661 The Design Engineers Search Engine Provides ACTUAL Data Instantly at minicircuits.com

Notes: 1. Performance and quality attributes and conditions not expressly stated in this specification sheet are intended to be excluded and do not form a part of this specification sheet. 2. Electrical specifications and performance data contained herein are based on Mini-Circuit's applicable established test performance criteria and measurement instructions. 3. The parts covered by this specification sheet are subject to Mini-Circuits standard limited warranty and terms and conditions (collectively, "Standard Terms"); Purchasers of this part are entitled to the rights and benefits contained therein. For a full statement of the Standard Terms and the exclusive rights and remedies thereunder, please visit Mini-Circuits' website at www.minicircuits.com/MCLStore/terms.jsp.

REV. OR
M112722
EDR-8685U
RLP-900+
URJ/RAV
120807
Page 1 of 1