

Low Pass Filter

SXLP-190+

50Ω DC to 190 MHz

Maximum Ratings

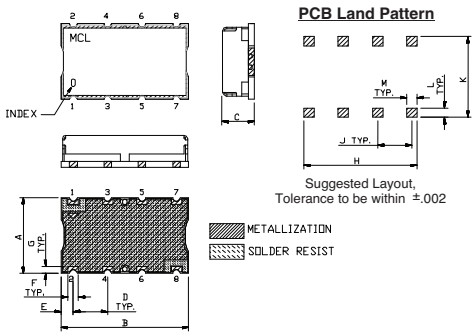
Operating Temperature	-40°C to 85°C
Storage Temperature	-55°C to 100°C
RF Power Input	0.5W Max.

Permanent damage may occur if any of these limits are exceeded.

Pin Connections

INPUT	1
OUTPUT	8
GROUND	2, 3, 4, 5, 6, 7

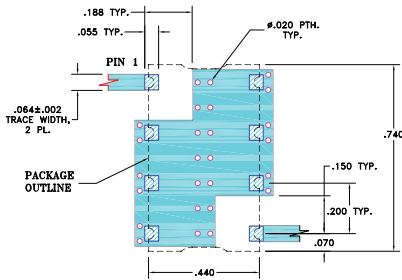
Outline Drawing



Outline Dimensions (inch/mm)

A	B	C	D	E	F	G	H	J	K	L	M	wt. grams
.44	.74	.27	.200	.07	.060	11.18	18.80	6.86	5.08	1.78	1.52	
						1.02	16.76	5.08	11.94	1.40	1.52	3.0

Demo Board MCL P/N: TB-368 Suggested PCB Layout (PL-230)

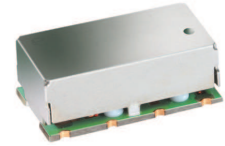


Features

- high rejection
- sharp cut-off
- shielded package
- aqueous washable
- low cost

Applications

- defense communications
- receivers / transmitters
- harmonic rejection



CASE STYLE: HF1139
 PRICE: \$11.45 ea. QTY (1-9)

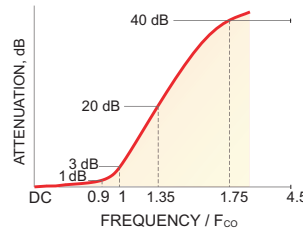
+RoHS Compliant

The +Suffix identifies RoHS Compliance. See our web site for RoHS Compliance methodologies and qualifications

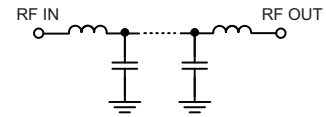
Low Pass Filter Electrical Specifications (T_{AMB} = 25°C)

PASSBAND (MHz)	f _{co} , MHz Nom.	STOPBAND (MHz)		VSWR (:1)	
		(Loss > 20dB)	(Loss > 40dB)	Passband Typ.	Stopband Typ.
DC - 190	210	290 - 390	390 - 1000	1.4	18

Typical Frequency Response

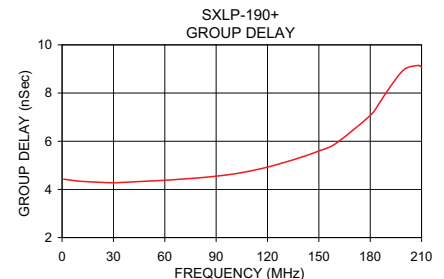
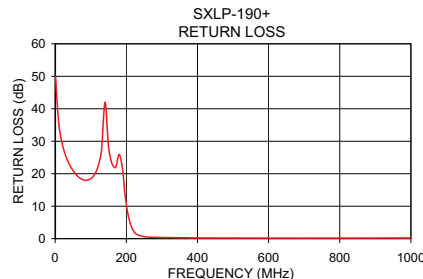
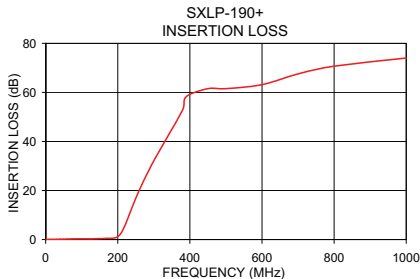


Functional Schematic



Typical Performance Data at 25°C

Frequency (MHz)	Insertion Loss (dB)		Return Loss (dB)	Frequency (MHz)	Group Delay (nSec)
	\bar{x}	σ			
1.0	0.04	0.01	49.88	1.0	4.42
20.0	0.08	0.01	29.15	10.0	4.34
50.0	0.17	0.01	21.01	20.0	4.30
120.0	0.29	0.01	22.07	30.0	4.28
140.0	0.33	0.00	42.01	50.0	4.34
190.0	0.63	0.01	20.93	60.0	4.38
200.0	1.17	0.03	10.55	80.0	4.48
210.0	2.79	0.09	5.05	90.0	4.55
220.0	5.74	0.15	2.39	100.0	4.64
230.0	9.45	0.22	1.28	110.0	4.76
250.0	16.95	0.26	0.61	120.0	4.92
290.0	29.35	0.34	0.38	130.0	5.12
390.0	55.75	2.14	0.23	140.0	5.34
500.0	65.57	4.10	0.19	150.0	5.60
600.0	68.15	5.42	0.18	160.0	5.91
700.0	75.50	5.06	0.17	180.0	7.07
800.0	71.08	3.29	0.18	190.0	8.08
1000.0	74.05	3.49	0.22	210.0	9.09



For detailed performance specs & shopping online see web site

P.O. Box 350166, Brooklyn, New York 11235-0003 (718) 934-4500 Fax (718) 332-4661 The Design Engineers Search Engine Provides ACTUAL Data Instantly at minicircuits.com

Notes: 1. Performance and quality attributes and conditions not expressly stated in this specification sheet are intended to be excluded and do not form a part of this specification sheet. 2. Electrical specifications and performance data contained herein are based on Mini-Circuit's applicable established test performance criteria and measurement instructions. 3. The parts covered by this specification sheet are subject to Mini-Circuits standard limited warranty and terms and conditions (collectively, "Standard Terms"); Purchasers of this part are entitled to the rights and benefits contained therein. For a full statement of the Standard Terms and the exclusive rights and remedies thereunder, please visit Mini-Circuits' website at www.minicircuits.com/MCLStore/terms.jsp.

REV. OR
 M112220
 EDR-7469/1U
 SXLP-190+
 URJ/RAV
 121016
 Page 1 of 1