

High Pass Filter

50Ω 6000 to 11500 MHz

HFCN-5500D+



CASE STYLE: FV1206-1
PRICE: \$3.49 ea. QTY (20)

+RoHS Compliant
The +Suffix identifies RoHS Compliance. See our web site for RoHS Compliance methodologies and qualifications

Available Tape and Reel at no extra cost
Reel Size 7" Devices/Reel 20, 50, 100, 200, 500, 1000, 3000

Maximum Ratings

Operating Temperature	-55°C to 100°C
Storage Temperature	-55°C to 100°C
RF Power Input*	7W max. at 25°C
Max. DC Voltage at pins 1&3	25 VDC

*Passband rating, derate linearly to 3W at 100°C ambient.
Permanent damage may occur if any of these limits are exceeded.

Pin Connections

RF IN	1
RF OUT	3
GROUND	2,4,5,6

Features

- Low cost
- Small size
- 5 sections
- Temperature stable
- Excellent power handling, 7W
- Hermetically sealed
- LTCC construction
- Protected by US Patent 7,760,485

Applications

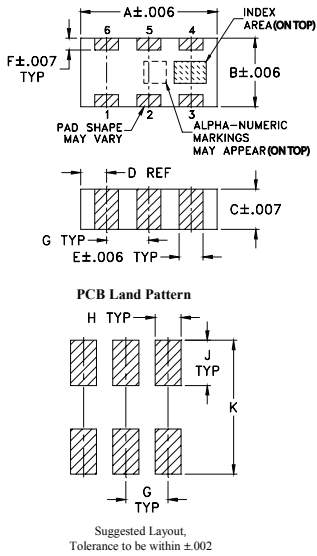
- Sub-harmonic rejection and DC blocking
- Transmitters / receivers

Electrical Specifications^{1,2} at 25°C

STOPBAND (MHz)	f _{co} , MHz Nom.	PASSBAND (MHz)	VSWR Typ.	POWER INPUT (W)	NO. OF SECTIONS
(Loss > 30dB) Typ.	(Loss > 20dB) Min.	(Loss < 1.5dB) Max.	Frequency (MHz) 1.5:1	Max.	
4000	4500	6600-10000 6000-11500	20:1	5600-11000	7

1. DC Resistance to ground is 100 Mohms min.
2. Measured on Mini-Circuits Characterization Test Board TB-285.

Outline Drawing

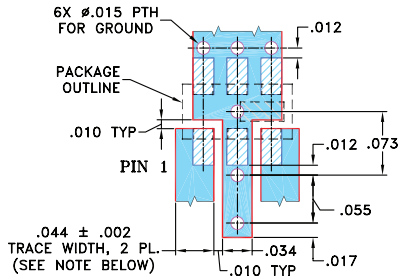


Outline Dimensions (inch/mm)

A	B	C	D	E	F
.126	.063	.035	.024	.022	.011
3.20	1.60	0.89	0.61	0.56	0.28

G	H	J	K	wt
.039	.024	.042	.123	grams
0.99	0.61	1.07	3.12	.020

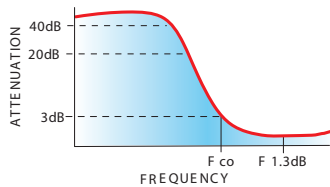
Demo Board MCL P/N: TB-285 Suggested PCB Layout (PL-158)



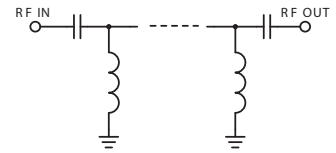
NOTE: 1. TRACE WIDTH IS SHOWN FOR ROGERS RO4350 WITH DIELECTRIC THICKNESS: .020 ± .0015; COPPER: 1/2 OZ. EACH SIDE. FOR OTHER MATERIALS TRACE WIDTH MAY NEED TO BE MODIFIED.
2. BOTTOM SIDE OF THE PCB IS CONTINUOUS GROUND PLANE.

- DENOTES PCB COPPER LAYOUT
- DENOTES COPPER LAND PATTERN FREE OF SOLDERMASK

typical frequency response



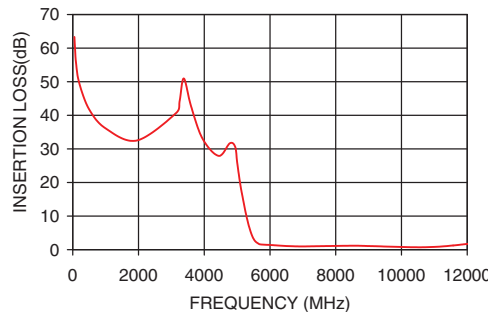
electrical schematic



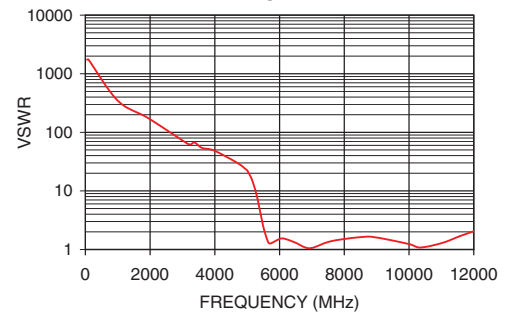
Typical Performance Data at 25°C

Frequency (MHz)	Insertion Loss (dB)	VSWR (:1)
50	63.32	1737.18
500	41.73	868.59
1000	36.12	434.30
3250	44.07	62.05
4000	32.16	45.72
4500	27.90	34.75
5000	26.03	22.29
5500	3.24	2.44
5600	2.05	1.53
6000	1.39	1.53
6600	1.05	1.22
9000	1.09	1.60
10000	0.79	1.24
11500	1.18	1.64
12000	1.71	2.05

HFCN-5500D+ INSERTION LOSS



HFCN-5500D+ VSWR



Notes:
A. Performance and quality attributes and conditions not expressly stated in this specification document are intended to be excluded and do not form a part of this specification document.
B. Electrical specifications and performance data contained in this specification document are based on Mini-Circuit's applicable established test performance criteria and measurement instructions.
C. The parts covered by this specification document are subject to Mini-Circuits standard limited warranty and terms and conditions (collectively, "Standard Terms"); Purchasers of this part are entitled to the rights and benefits contained therein. For a full statement of the Standard Terms and the exclusive rights and remedies thereunder, please visit Mini-Circuits' website at www.minicircuits.com/MCLStore/terms.jsp