

High IP3

# Frequency Mixer

Level 17 (LO Power +17 dBm) 120 to 260 MHz

## HJK-261H+



CASE STYLE: TTT881  
PRICE: \$8.95 ea. QTY. (10)

**+RoHS Compliant**  
The +Suffix identifies RoHS Compliance. See our web site for RoHS Compliance methodologies and qualifications

### Maximum Ratings

Operating Temperature	-40°C to 85°C
Storage Temperature	-55°C to 100°C
LO Power	+19 dBm
RF Power	+20 dBm

Permanent damage may occur if any of these limits are exceeded.

### Pad Connections

LO	2
RF	1
IF	3
GROUND	4,5,6

### Features

- high IP3, 30 dBm typ.
- excellent L-R isolation, 55 dB typ.;
- L-I isolation, 37 dB typ.

### Applications

- base stations
- amateur radio
- aeronautical
- mobile radio
- radar
- emergency

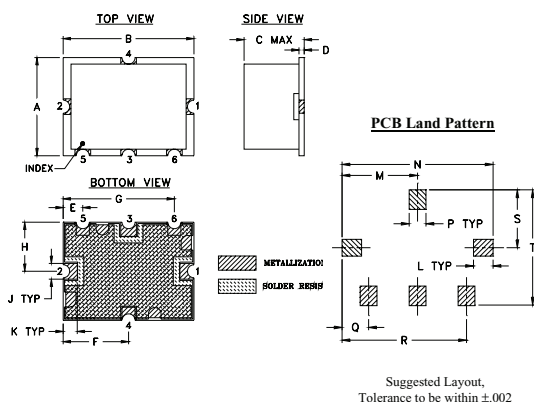
### Electrical Specifications at 25°C

Parameter	Min.	Typ.	Max.	Unit
Frequency Range, RF	120	—	260	MHz
Frequency Range, LO	190	—	330	MHz
Frequency Range, IF	10	—	150	MHz
Conversion Loss	—	7.1	8.5	dB
LO to RF Isolation	45	55	—	dB
LO to IF Isolation	30	37	—	dB
IP3	—	30	—	dBm
RF Input Power at 1 dB Compression	—	+14	—	dBm

### Typical Performance Data

Frequency	Conversion Loss (dB)	Isolation L-R	Isolation L-I	VSWR RF Port	VSWR LO Port	IP3 (dBm)
RF MHz	LO MHz	LO +17dBm	LO +17dBm	LO +17dBm	LO +17dBm	LO +17dBm
120.0	190.1	6.83	61.00	45.90	2.07	31.59
136.0	206.1	6.85	59.18	43.59	2.05	32.64
146.0	216.1	6.95	57.55	42.12	2.09	33.14
156.0	226.1	6.78	56.37	40.85	2.11	34.33
161.0	231.1	6.58	55.91	40.25	2.11	35.11
174.0	244.1	6.50	55.48	38.78	2.07	36.14
184.0	254.1	6.64	55.75	38.39	2.07	36.04
194.0	264.1	6.80	55.72	37.75	2.08	37.31
214.0	284.1	6.66	54.99	37.36	2.04	35.67
224.0	294.1	6.53	55.51	37.49	1.98	35.53
244.0	314.1	6.75	57.80	38.90	1.94	33.40
264.0	334.1	6.84	59.95	40.10	1.90	32.28

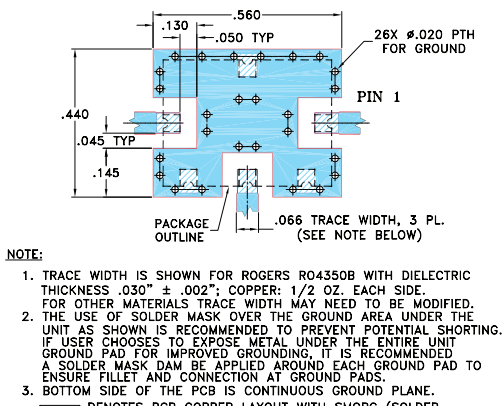
### Outline Drawing



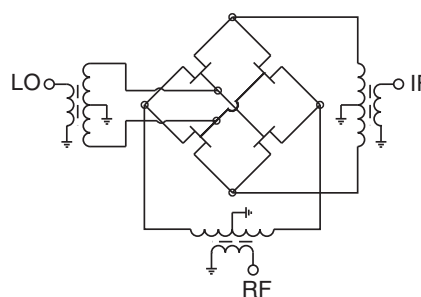
### Outline Dimensions (inch)

A	B	C	D	E	F	G	H	J	K
.38	.50	.23	.020	.075	.250	.425	.187	.050	.050
9.65	12.70	5.84	0.51	1.91	6.35	10.80	4.75	1.27	1.27
L	M	N	P	Q	R	S	T	wt.	
.070	.270	.540	.060	.095	.445	.208	.415	grams	
1.78	6.86	13.72	1.52	2.41	11.30	5.28	10.54	0.8	

### Demo Board MCL P/N: TB-12 Suggested PCB Layout (PL-079)



### Electrical Schematic



**Mini-Circuits®**  
ISO 9001 ISO 14001 AS 9100 CERTIFIED  
IF/RF MICROWAVE COMPONENTS

For detailed performance specs & shopping online see web site

REV. OR  
M137921  
ED-13886/1  
HJK-261H+  
WL/CP/AM  
120713

P.O. Box 350166, Brooklyn, New York 11235-0003 (718) 934-4500 Fax (718) 332-4661 The Design Engineers Search Engine Provides ACTUAL Data Instantly at [minicircuits.com](http://minicircuits.com)

**Notes:** 1. Performance and quality attributes and conditions not expressly stated in this specification sheet are intended to be excluded and do not form a part of this specification sheet. 2. Electrical specifications and performance data contained herein are based on Mini-Circuit's applicable established test performance criteria and measurement instructions. 3. The parts covered by this specification sheet are subject to Mini-Circuits standard limited warranty and terms and conditions (collectively, "Standard Terms"); Purchasers of this part are entitled to the rights and benefits contained therein. For a full statement of the Standard Terms and the exclusive rights and remedies thereunder, please visit Mini-Circuits' website at [www.minicircuits.com/MCLStore/terms.jsp](http://www.minicircuits.com/MCLStore/terms.jsp).

