

Surface Mount Frequency Mixer

Level 17 (LO Power +17 dBm) 10 to 1000 MHz

ADEX-10H+ ADEX-10H



Maximum Ratings

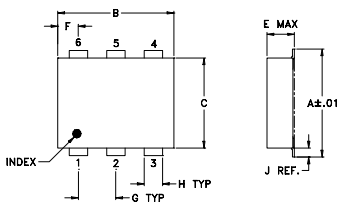
Operating Temperature	-40°C to 85°C
Storage Temperature	-55°C to 100°C
RF Power	200mW
IF Current	40mA

Permanent damage may occur if any of these limits are exceeded.

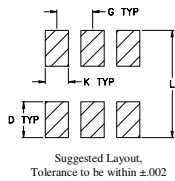
Pin Connections

LO	6
RF	3
IF	2
GROUND	1,4,5

Outline Drawing



PCB Land Pattern

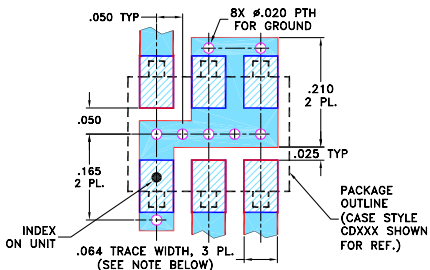


Outline Dimensions (inch/mm)

A	B	C	D	E	F	G
.272	.310	.220	.100	.112	.055	.100
6.91	7.87	5.59	2.54	2.84	1.40	2.54

H	J	K	L	wt
.030	.026	.065	.300	grams
0.76	0.66	1.65	7.62	0.20

Demo Board MCL P/N: TB-03 Suggested PCB Layout (PL-052)



- NOTES: 1. TRACE WIDTH IS SHOWN FOR ROGERS RO4350B WITH DIELECTRIC THICKNESS .030" ± .002"; COPPER: 1/2 OZ. EACH SIDE. FOR OTHER MATERIALS TRACE WIDTH MAY NEED TO BE MODIFIED.
2. BOTTOM SIDE OF THE PCB IS CONTINUOUS GROUND PLANE.
- DENOTES PCB COPPER LAYOUT WITH SMOBC (SOLDER MASK OVER BARE COPPER)
 - ▨ DENOTES COPPER LAND PATTERN FREE OF SOLDER MASK

Features

- excellent L-R isolation, 55 dB typ.
- excellent conversion loss flatness, ±0.35 dB typ. over entire band
- low conversion loss, 7.0 dB typ.
- good VSWR, 1.4:1 typ. for LO, 1.6:1 typ. for RF, 1.4:1 typ. for IF
- good performance to 1500 MHz
- aqueous washable
- protected by U.S. Patents 6,133,525 and 6,947,717

Applications

- cellular
- PCN

CASE STYLE: CD542
PRICE: \$3.45 ea. QTY (20)

+RoHS Compliant

The +Suffix identifies RoHS Compliance. See our web site for RoHS Compliance methodologies and qualifications



Available Tape and Reel
at no extra cost

Reel Size	Devices/Reel
7"	20, 50, 100, 200, 500
13"	500, 1000

Electrical Specifications

FREQUENCY (MHz)		CONVERSION LOSS (dB)				LO-RF ISOLATION (dB)			LO-IF ISOLATION (dB)			IP3 at center band (dBm)						
LO/RF	IF	Mid-Band		Total	L	M	U	L	M	U								
f_L - f_U		\bar{X}	σ	Max.	Range	Typ.	Min.	Typ.	Min.	Typ.	Min.	Typ.						
10-1000	DC-800	7.0	0.10	8.5 [†]	9.5 [†]	68	55	55	40	47	31	46	30	32	20	26	13	22

1 dB COMP: +14 dBm typ.

[†]Conversion loss increases 0.5 dB when IF is above 150 MHz

L = low range [f_L to 10 f_L]

m = mid band [$2f_L$ to $f_U/2$]

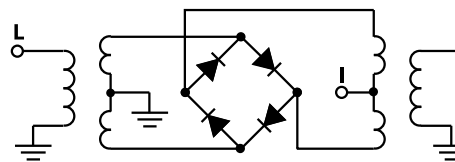
M = mid range [10 f_L to $f_U/2$]

U = upper range [$f_U/2$ to f_U]

Typical Performance Data

Frequency (MHz)		Conversion Loss (dB)	Isolation L-R (dB)	Isolation L-I (dB)	VSWR RF Port (:1)	VSWR LO Port (:1)
RF	LO	LO +17dBm	LO +17dBm	LO +17dBm	LO +17dBm	LO +17dBm
10.0	40.0	7.3	74.1	50.8	1.6	1.1
22.0	52.0	7.2	71.8	48.3	1.6	1.1
40.0	70.0	7.3	69.3	45.9	1.6	1.1
52.0	82.0	7.3	68.1	44.5	1.6	1.2
70.0	100.0	7.3	66.7	42.7	1.5	1.2
88.0	118.0	7.3	66.0	41.2	1.5	1.2
94.0	124.0	7.2	65.8	40.8	1.5	1.2
100.0	130.0	7.2	65.5	40.4	1.5	1.2
160.0	190.0	7.2	61.7	36.8	1.5	1.3
220.0	250.0	7.0	58.6	34.0	1.5	1.3
280.0	310.0	7.1	56.7	32.8	1.5	1.3
400.0	430.0	7.2	57.3	32.2	1.5	1.3
460.0	490.0	7.2	53.7	31.8	1.5	1.4
520.0	550.0	7.2	50.0	31.5	1.5	1.4
580.0	610.0	7.3	49.1	30.6	1.5	1.4
700.0	730.0	7.7	45.6	29.9	1.6	1.5
760.0	790.0	7.8	44.2	28.5	1.6	1.7
820.0	850.0	7.7	41.9	26.5	1.5	1.7
940.0	970.0	7.5	36.6	23.5	1.4	1.9
1000.0	1030.0	7.4	35.4	22.5	1.3	2.0

Electrical Schematic



Mini-Circuits
ISO 9001 ISO 14001 AS 9100 CERTIFIED
IF/RF MICROWAVE COMPONENTS

For detailed performance specs & shipping online see web site

P.O. Box 350166, Brooklyn, New York 11235-0003 (718) 934-4500 Fax (718) 332-4661 The Design Engineers Search Engine Provides ACTUAL Data Instantly at minicircuits.com

Notes: 1. Performance and quality attributes and conditions not expressly stated in this specification sheet are intended to be excluded and do not form a part of this specification sheet. 2. Electrical specifications and performance data contained herein are based on Mini-Circuit's applicable established test performance criteria and measurement instructions. 3. The parts covered by this specification sheet are subject to Mini-Circuits standard limited warranty and terms and conditions (collectively, "Standard Terms"); Purchasers of this part are entitled to the rights and benefits contained therein. For a full statement of the Standard Terms and the exclusive rights and remedies thereunder, please visit Mini-Circuits' website at www.minicircuits.com/MCLStore/terms.jsp.

REV. C
M102713
ADEX-10H
ED-9813/1
DJ/TD/CP/AM
120627
Page 1 of 2

Performance Charts

ADEX-10H+ ADEX-10H

