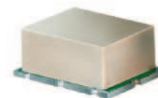


# Surface Mount Frequency Mixer

## SYM-36H+ SYM-36H

Level 17 (LO Power +17 dBm) 1500 to 3600 MHz



### Maximum Ratings

Operating Temperature	-40°C to 85°C
Storage Temperature	-55°C to 100°C
RF Power	200mW
IF Current	40mA

Permanent damage may occur if any of these limits are exceeded.

### Pin Connections

LO	2
RF	1
IF	3
GROUND	4,5,6

### Features

- low conversion loss, 6.3 dB typ.
- good L-R isolation, 30 dB typ. & L-I isolation, 34 dB typ.
- high IP3, 25 dBm typ.

### Applications

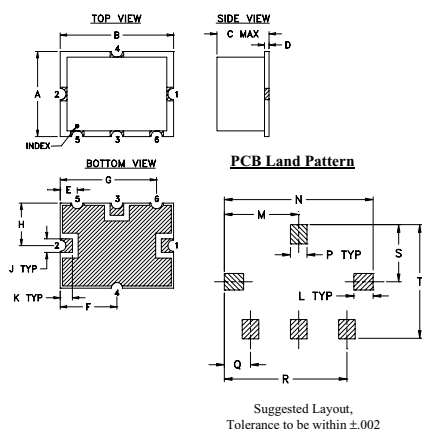
- ISM band
- PCS
- MMDS

CASE STYLE: TTT167  
PRICE: \$21.95 ea. QTY (1-9)

**+ RoHS compliant in accordance with EU Directive (2002/95/EC)**

The +Suffix identifies RoHS Compliance. See our web site for RoHS Compliance methodologies and qualifications.

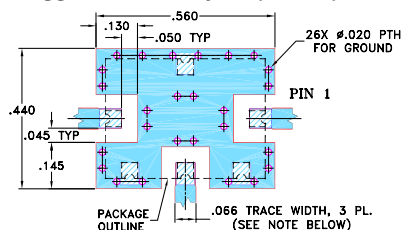
### Outline Drawing



### Outline Dimensions (inch/mm)

A	B	C	D	E	F	G	H	J	K
.38	.50	.23	.020	.075	.250	.425	.187	.050	.050
9.65	12.70	5.84	0.51	1.91	6.35	10.80	4.75	1.27	1.27
L	M	N	P	Q	R	S	T	wt.	
.070	.270	.540	.060	.095	.445	.208	.415		
1.78	6.86	13.72	1.52	2.41	11.30	5.28	10.54		0.8

### Demo Board MCL P/N: TB-12 Suggested PCB Layout (PL-079)



### Electrical Specifications

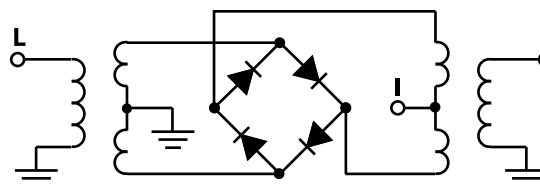
FREQUENCY (MHz)		CONVERSION LOSS (dB)		LO-RF ISOLATION (dB)		LO-IF ISOLATION (dB)		IP3 at center band (dBm)	
LO/RF	IF	Mid-Band	Total Range Max.	Typ.	Min.	Typ.	Min.	Typ.	
$f_L - f_U$		$\bar{X}$	$\sigma$						
1500-3600	DC-600	6.3	.40	9.0	30	20	34	20*	25

1 dB COMP.: +14 dBm typ.  
\* 15 dB min. over 1500-1800 MHz

### Typical Performance Data

Frequency (MHz)		Conversion Loss (dB)	Isolation L-R (dB)	Isolation L-I (dB)	VSWR RF Port (:1)	VSWR LO Port (:1)
RF	LO	LO +17dBm	LO +17dBm	LO +17dBm	LO +17dBm	LO +17dBm
1500.00	1530.00	5.92	33.00	27.70	2.32	2.03
1770.00	1800.00	5.68	42.40	30.30	2.32	1.49
1950.00	1980.00	5.76	34.30	30.40	2.25	1.29
2000.00	2030.00	5.50	32.60	30.70	2.18	1.27
2090.00	2120.00	5.33	36.50	32.50	2.23	1.20
2200.00	2230.00	5.18	41.90	33.00	1.81	1.21
2300.00	2330.00	5.29	29.20	32.60	1.54	1.29
2410.00	2440.00	6.73	29.00	34.60	2.96	1.43
2500.00	2530.00	7.04	30.20	34.20	3.79	1.54
2570.00	2600.00	6.62	28.00	33.20	3.79	1.54
2700.00	2730.00	6.82	27.90	36.60	3.79	1.64
2890.00	2920.00	6.74	28.80	32.90	2.92	1.77
3000.00	3030.00	6.09	27.70	43.00	2.96	1.71
3050.00	3080.00	6.08	28.10	44.50	2.88	1.85
3200.00	3230.00	5.78	29.00	39.30	2.40	1.88
3370.00	3400.00	5.75	26.50	37.50	2.37	2.18
3500.00	3530.00	6.60	28.10	33.60	2.96	2.49
3530.00	3560.00	6.70	28.60	33.10	3.16	2.32
3570.00	3600.00	6.89	28.90	32.10	3.38	2.43

### Electrical Schematic



**Mini-Circuits**  
ISO 9001 ISO 14001 AS 9100 CERTIFIED

For detailed performance specs & shopping online see web site

P.O. Box 350166, Brooklyn, New York 11235-0003 (718) 934-4500 Fax (718) 332-4661 The Design Engineers Search Engine Provides ACTUAL Data Instantly at [minicircuits.com](http://minicircuits.com)

IF/RF MICROWAVE COMPONENTS

Notes: 1. Performance and quality attributes and conditions not expressly stated in this specification sheet are intended to be excluded and do not form a part of this specification sheet. 2. Electrical specifications and performance data contained herein are based on Mini-Circuit's applicable established test performance criteria and measurement instructions. 3. The parts covered by this specification sheet are subject to Mini-Circuit's standard limited warranty and terms and conditions (collectively, "Standard Terms"); Purchasers of this part are entitled to the rights and benefits contained therein. For a full statement of the Standard Terms and the exclusive rights and remedies thereunder, please visit Mini-Circuit's website at [www.minicircuits.com/MCLStore/terms.jsp](http://www.minicircuits.com/MCLStore/terms.jsp).

REV. D  
M112207  
SYM-36H  
DJ/TD/AM  
091006  
Page 1 of 2

## Performance Charts

