

Coaxial Frequency Mixer

ZEM-4300+

Level 7 (LO Power +7 dBm) 300 to 4300 MHz

Maximum Ratings

Operating Temperature	-55°C to 100°C
Storage Temperature	-55°C to 100°C
RF Power	50mW
IF Current	40mA

Permanent damage may occur if any of these limits are exceeded.

Coaxial Connections

LO	2
RF	1
IF	3

Features

- low conversion loss, 6.65 dB typ.
- broadband, 300 to 4300 MHz
- IF response to DC

Applications

- UHF/VHF
- MMDS
- ISM/GPS
- instrumentation



CASE STYLE: V37

Connectors	Model	Price	Qty.
SMA	ZEM-4300+	\$79.95	(1-9)

+ RoHS compliant in accordance with EU Directive (2002/95/EC)

The +Suffix has been added in order to identify RoHS Compliance. See our web site for RoHS Compliance methodologies and qualifications.

Electrical Specifications

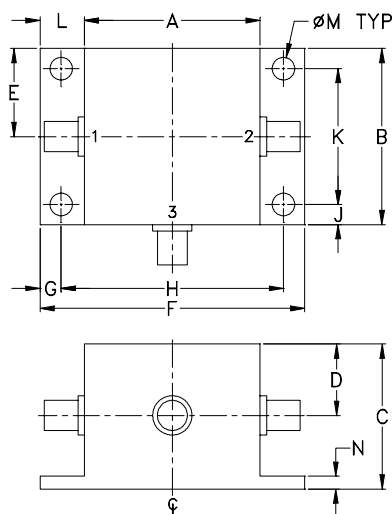
FREQUENCY (MHz)	CONVERSION LOSS (dB)	LO-RF ISOLATION (dB)				LO-IF ISOLATION (dB)						
		Mid-Band		Total Range Max.		L		U				
LO/RF f_L - f_U	IF \bar{X} σ	\bar{X}	σ	Max.	L Typ.	U Typ.	L Min.	U Min.				
300-4300	DC-1000	6.65	0.06	9.5	40	20	30	17	15	8	15	8

1 dB COMP.: +1 dBm typ.

L = low range [f_L to $10 f_L$]

U = upper range [$10 f_U$ to f_U]

Outline Drawing



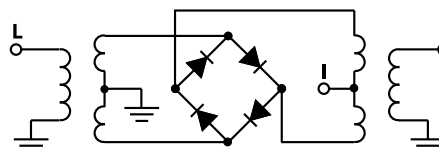
Outline Dimensions (inch/mm)

A	B	C	D	E	F	G
.83	.83	.75	.37	.42	1.25	.10
21.08	21.08	19.05	9.40	10.67	31.75	2.54
H	J	K	L	M	N	wt
1.050	.10	.640	.21	.106	.06	grams
26.67	2.54	16.26	5.33	2.69	1.52	22.0

Typical Performance Data

Frequency (MHz)		Conversion Loss (dB)	Isolation L-R (dB)	Isolation L-I (dB)	VSWR RF Port (:1)	VSWR LO Port (:1)
RF	LO	LO +7dBm	LO +7dBm	LO +7dBm	LO +7dBm	LO +7dBm
300.00	400.00	7.36	51.34	31.66	5.75	4.40
414.29	514.29	6.29	64.83	33.69	3.35	2.89
528.57	428.57	5.08	49.72	36.96	2.55	2.65
757.14	657.14	4.96	41.17	38.13	1.71	2.19
1000.00	900.00	5.45	37.81	30.37	2.55	2.08
1214.29	1114.29	6.11	36.73	26.04	3.13	1.99
1442.86	1342.86	6.61	35.66	22.90	3.50	1.85
1671.43	1571.43	6.86	34.88	19.27	4.13	1.68
1900.00	1800.00	7.03	33.74	17.66	4.48	1.61
2000.00	1900.00	7.13	33.54	17.52	5.06	1.57
2128.57	2028.67	7.43	33.70	17.76	5.38	1.47
2471.43	2371.43	8.04	33.24	18.85	5.56	1.41
2700.00	2000.00	8.34	33.45	19.52	5.51	1.37
2814.29	2714.29	8.52	34.07	19.86	5.27	1.36
3000.00	2900.00	8.85	33.99	19.95	5.77	1.58
3157.14	3057.14	9.03	33.55	19.48	6.97	1.60
3500.00	3400.00	9.22	32.04	18.72	8.72	2.03
3728.57	3628.57	9.04	30.42	18.47	8.23	2.39
4000.00	3900.00	8.91	29.46	20.82	7.47	2.43
4300.00	4200.00	8.41	33.24	24.62	6.26	2.13

Electrical Schematic



Mini-Circuits
ISO 9001 ISO 14001 AS 9100 CERTIFIED

For detailed performance specs & shopping online see web site

P.O. Box 350166, Brooklyn, New York 11235-0003 (718) 934-4500 Fax (718) 332-4661 The Design Engineers Search Engine www.minicircuits.com Provides ACTUAL Data Instantly at minicircuits.com

IF/RF MICROWAVE COMPONENTS

Notes: 1. Performance and quality attributes and conditions not expressly stated in this specification sheet are intended to be excluded and do not form a part of this specification sheet. 2. Electrical specifications and performance data contained herein are based on Mini-Circuit's applicable established test performance criteria and measurement instructions. 3. The parts covered by this specification sheet are subject to Mini-Circuits standard limited warranty and terms and conditions (collectively, "Standard Terms"); Purchasers of this part are entitled to the rights and benefits contained therein. For a full statement of the Standard Terms and the exclusive rights and remedies thereunder, please visit Mini-Circuits' website at www.minicircuits.com/MCLStore/terms.jsp.

