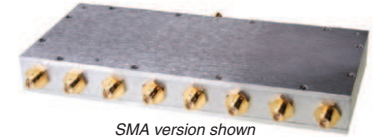


Coaxial

# Power Splitter/Combiner

8 Way-0° 50Ω 1000 to 2000 MHz

ZB8PD-2+



## Maximum Ratings

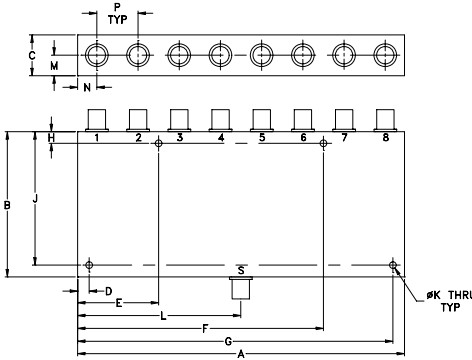
Operating Temperature	-55°C to 100°C
Storage Temperature	-55°C to 100°C
Power Input (as a splitter)	10W max.
Internal Dissipation	0.875W max.

Permanent damage may occur if any of these limits are exceeded.

## Coaxial Connections

SUM PORT	S
PORT 1,2,3,4,5,6,7,8	1,2,3,4,5,6,7,8

## Outline Drawing



## Outline Dimensions (inch/mm)

A	B	C	D	E	F	G	H
7.06	3.13	.88	.250	1.750	5.310	6.810	.250
179.32	79.50	22.35	6.35	44.45	134.87	172.97	6.35

J	K	L	M	N	P	wt
2.875	.144	3.53	.44	.415	.89	grams
73.03	3.66	89.66	11.18	10.54	22.61	800

## Features

- wideband, 1000 to 2000 MHz
- low insertion loss, 0.8 dB typ.
- good isolation, 24 dB typ.
- up to 10W power input as splitter

## Applications

- GPS
- PCS/DCS
- communication systems
- instrumentation

## Electrical Specifications

FREQ. RANGE (MHz)	ISOLATION (dB)		INSERTION LOSS (dB) ABOVE 9.0 dB		PHASE UNBALANCE (Degrees)	AMPLITUDE UNBALANCE (dB)
	Typ.	Min	Typ.	Max.	Max.	Max.
f <sub>L</sub> -f <sub>U</sub>						
1000-2000	24	17	0.8	1.3	18	0.8

SMA version shown  
CASE STYLE: Z41

Connectors	Model	Price	Qty.
SMA	ZB8PD-2-S+	\$138.95	(1-9)
N-TYPE	ZB8PD-2-N+	\$138.95	(1-9)

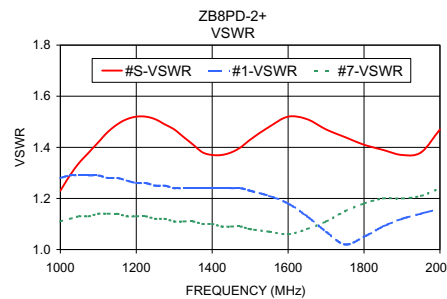
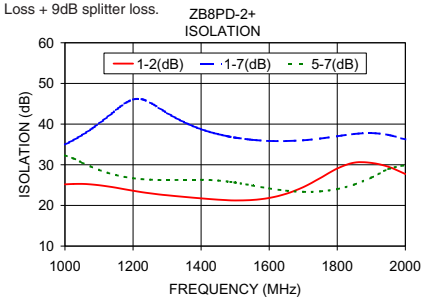
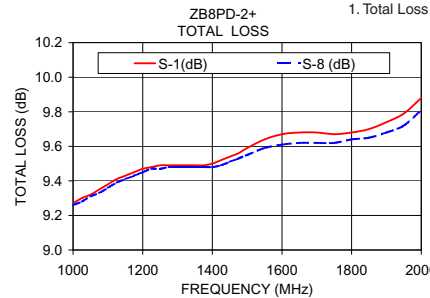
+ RoHS compliant in accordance with EU Directive (2002/95/EC)

The +Suffix has been added in order to identify RoHS Compliance. See our web site for RoHS Compliance methodologies and qualifications.

## Typical Performance Data

Freq. (MHz)	Total Loss <sup>1</sup> (dB)						Amp. Unb. (dB)	Isolation (dB)				Phase Unb. (deg.)	VSWR S	VSWR 1	VSWR 7
	S-1	S-2	S-3	S-4	S-6	S-8		1-2	1-7	3-4	5-7				
1000.00	9.27	9.44	9.41	9.22	9.42	9.26	0.21	25.18	34.96	24.73	32.31	3.71	1.23	1.28	1.11
1050.00	9.32	9.48	9.45	9.27	9.47	9.31	0.20	25.29	37.28	24.99	30.56	3.95	1.34	1.29	1.13
1100.00	9.38	9.52	9.49	9.33	9.52	9.36	0.19	24.98	40.13	24.89	28.74	4.22	1.42	1.29	1.14
1200.00	9.47	9.58	9.56	9.43	9.57	9.45	0.15	23.61	46.04	23.80	26.70	4.72	1.52	1.26	1.13
1250.00	9.49	9.58	9.56	9.46	9.57	9.47	0.12	22.98	45.29	23.18	26.33	4.96	1.51	1.25	1.12
1300.00	9.49	9.56	9.54	9.46	9.55	9.48	0.09	22.51	42.73	22.68	26.24	5.18	1.47	1.24	1.11
1400.00	9.50	9.51	9.51	9.48	9.50	9.48	0.03	21.74	38.74	21.81	26.31	5.59	1.37	1.24	1.10
1500.00	9.59	9.54	9.52	9.57	9.52	9.55	0.09	21.23	36.68	21.24	25.62	5.87	1.43	1.23	1.08
1600.00	9.67	9.55	9.53	9.66	9.54	9.61	0.19	21.83	35.86	21.81	24.19	6.07	1.52	1.18	1.06
1700.00	9.68	9.49	9.48	9.70	9.51	9.62	0.28	24.50	36.02	24.45	23.35	6.27	1.47	1.07	1.11
1750.00	9.67	9.46	9.46	9.72	9.48	9.62	0.32	26.73	36.45	26.75	23.46	6.38	1.44	1.02	1.15
1800.00	9.68	9.44	9.45	9.75	9.47	9.64	0.36	29.08	37.01	29.40	24.02	6.45	1.41	1.05	1.18
1900.00	9.74	9.44	9.45	9.81	9.46	9.68	0.41	30.46	37.80	31.63	26.84	6.42	1.37	1.12	1.20
1950.00	9.79	9.46	9.47	9.85	9.47	9.72	0.43	29.52	37.34	30.46	28.92	6.35	1.38	1.14	1.21
2000.00	9.88	9.54	9.54	9.93	9.54	9.81	0.45	27.73	36.24	28.25	29.93	6.42	1.47	1.16	1.24

1. Total Loss = Insertion Loss + 9dB splitter loss.



## electrical schematic



**Mini-Circuits®**  
ISO 9001 ISO 14001 AS 9100 CERTIFIED  
The Design Engineers Search Engine **Mini-Circuits** Provides ACTUAL Data Instantly at [minicircuits.com](http://minicircuits.com)  
IF/RF MICROWAVE COMPONENTS

For detailed performance specs & shipping online see web site

P.O. Box 350166, Brooklyn, New York 11235-0003 (718) 934-4500 Fax (718) 332-4661 The Design Engineers Search Engine **Mini-Circuits** Provides ACTUAL Data Instantly at [minicircuits.com](http://minicircuits.com)

Notes: 1. Performance and quality attributes and conditions not expressly stated in this specification sheet are intended to be excluded and do not form a part of this specification sheet. 2. Electrical specifications and performance data contained herein are based on Mini-Circuit's applicable established test performance criteria and measurement instructions. 3. The parts covered by this specification sheet are subject to Mini-Circuits standard limited warranty and terms and conditions (collectively, "Standard Terms"); Purchasers of this part are entitled to the rights and benefits contained therein. For a full statement of the Standard Terms and the exclusive rights and remedies thereunder, please visit Mini-Circuits' website at [www.minicircuits.com/MCLStore/terms.jsp](http://www.minicircuits.com/MCLStore/terms.jsp).

REV. C  
M127604  
ZB8PD-2+  
HY/TD/CP/AM  
100615