

Coaxial Power Splitter/Combiner

8 Way-0° 50Ω 2000 to 4200 MHz

ZB8PD-4+
ZB8PD-4



Maximum Ratings

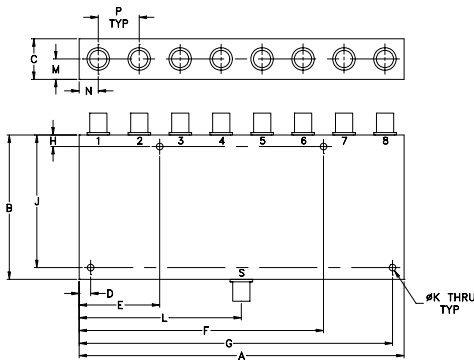
Operating Temperature	-55°C to 100°C
Storage Temperature	-55°C to 100°C
Power Input (as a splitter)	10W max.
Internal Dissipation	0.875W max.

Permanent damage may occur if any of these limits are exceeded.

Coaxial Connections

SUM PORT	S
PORT 1,2,3,4,5,6,7,8	1,2,3,4,5,6,7,8

Outline Drawing



Outline Dimensions (inch/mm)

A	B	C	D	E	F	G	H
7.06	3.13	.88	.250	1.750	5.310	6.810	.250
179.32	79.50	22.35	6.35	44.45	134.87	172.97	6.35

J	K	L	M	N	P	wt
2.875	.144	3.53	.44	.415	.89	grams
73.03	3.66	89.66	11.18	10.54	22.61	800

Features

- wideband, 2000 to 4200 MHz
- low insertion loss 0.8 dB typ.
- good isolation, 23 dB typ.
- rugged shielded case

Applications

- UHF/SHF
- ISM
- MMDS
- terrestrial radio

SMA version shown
CASE STYLE: Z41

Connectors	Model	Price	Qty.
SMA	ZB8PD-4-S+	\$138.95	(1-9)
N-TYPE	ZB8PD-4-N(+)	\$138.95	(1-9)

+ RoHS compliant in accordance with EU Directive (2002/95/EC)

The +Suffix identifies RoHS Compliance. See our web site for RoHS Compliance methodologies and qualifications.

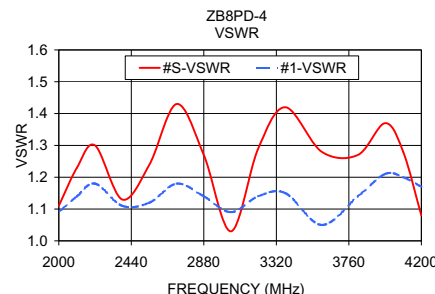
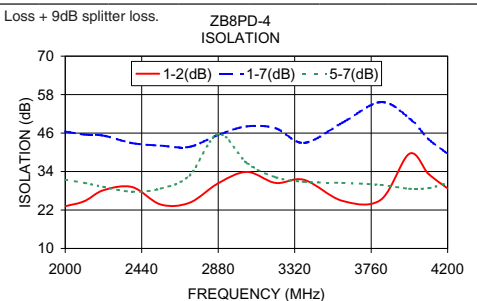
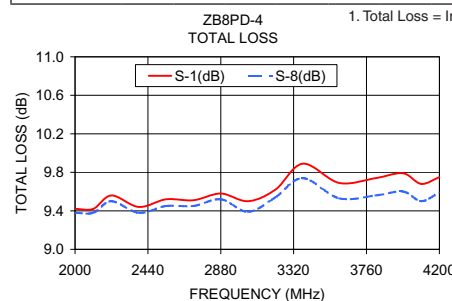
Electrical Specifications

FREQ. RANGE (MHz)	ISOLATION (dB)		INSERTION LOSS (dB) ABOVE 9.0 dB		PHASE UNBALANCE (Degrees)	AMPLITUDE UNBALANCE (dB)
	Typ.	Min.	Typ.	Max.	Max.	Max.
2000-4200	23	16	0.8	1.8	10	1.2

Typical Performance Data

Frequency (MHz)	Total Loss ¹ (dB)						Amplitude Unbalance (dB)	Isolation (dB)				VSWR S	VSWR 1	VSWR 8
	S-1	S-2	S-3	S-4	S-6	S-8		1-2	1-7	3-4	5-7			
2000.00	9.42	9.43	9.46	9.46	9.42	9.38	0.09	23.18	46.51	23.53	31.46	1.11	1.09	1.07
2110.00	9.42	9.46	9.51	9.54	9.47	9.38	0.16	24.74	45.55	25.33	30.44	1.23	1.14	1.13
2220.00	9.56	9.63	9.60	9.60	9.58	9.50	0.13	28.18	45.22	28.06	29.20	1.30	1.18	1.17
2385.00	9.44	9.51	9.53	9.49	9.48	9.38	0.14	29.15	42.87	29.43	27.71	1.13	1.11	1.10
2550.00	9.52	9.58	9.61	9.57	9.55	9.45	0.17	23.71	42.08	24.24	28.68	1.24	1.12	1.10
2715.00	9.51	9.56	9.61	9.53	9.58	9.45	0.16	24.27	41.71	24.57	32.76	1.43	1.18	1.15
2880.00	9.58	9.67	9.67	9.62	9.65	9.52	0.15	30.34	45.43	30.61	45.63	1.27	1.14	1.13
3045.00	9.50	9.59	9.63	9.56	9.59	9.39	0.25	33.87	48.09	34.38	36.67	1.03	1.09	1.08
3210.00	9.62	9.75	9.83	9.74	9.77	9.54	0.29	30.45	47.51	29.42	32.25	1.29	1.14	1.11
3375.00	9.89	10.01	10.05	9.89	9.99	9.74	0.31	31.40	42.95	29.02	30.79	1.42	1.15	1.14
3595.00	9.69	9.79	9.89	9.76	9.79	9.53	0.36	24.83	49.26	25.60	30.44	1.28	1.05	1.05
3815.00	9.74	9.81	9.90	9.77	9.84	9.56	0.35	25.18	55.65	26.99	29.84	1.27	1.14	1.11
3980.00	9.79	9.89	9.96	9.85	9.88	9.60	0.36	39.55	50.61	50.31	28.62	1.37	1.21	1.20
4090.00	9.68	9.79	9.85	9.72	9.75	9.50	0.35	33.25	44.11	33.20	28.82	1.28	1.20	1.17
4200.00	9.75	9.88	9.93	9.81	9.85	9.59	0.34	28.72	39.55	30.49	30.38	1.08	1.17	1.14

1. Total Loss = Insertion Loss + 9dB splitter loss.



electrical schematic



Mini-Circuits®
ISO 9001 ISO 14001 AS 9100 CERTIFIED
FIRF MICROWAVE COMPONENTS

For detailed performance specs & shipping online see web site

P.O. Box 350166, Brooklyn, New York 11235-0003 (718) 934-4500 Fax (718) 332-4661 The Design Engineers Search Engine Provides ACTUAL Data Instantly at minicircuits.com

Notes: 1. Performance and quality attributes and conditions not expressly stated in this specification sheet are intended to be excluded and do not form a part of this specification sheet. 2. Electrical specifications and performance data contained herein are based on Mini-Circuit's applicable established test performance criteria and measurement instructions. 3. The parts covered by this specification sheet are subject to Mini-Circuits standard limited warranty and terms and conditions (collectively, "Standard Terms"); Purchasers of this part are entitled to the rights and benefits contained therein. For a full statement of the Standard Terms and the exclusive rights and remedies thereunder, please visit Mini-Circuits' website at www.minicircuits.com/MCLStore/terms.jsp.

REV. C
M127604
ZB8PD-4
HY/TD/CP/AM
100615