

MultiModem® ZPX

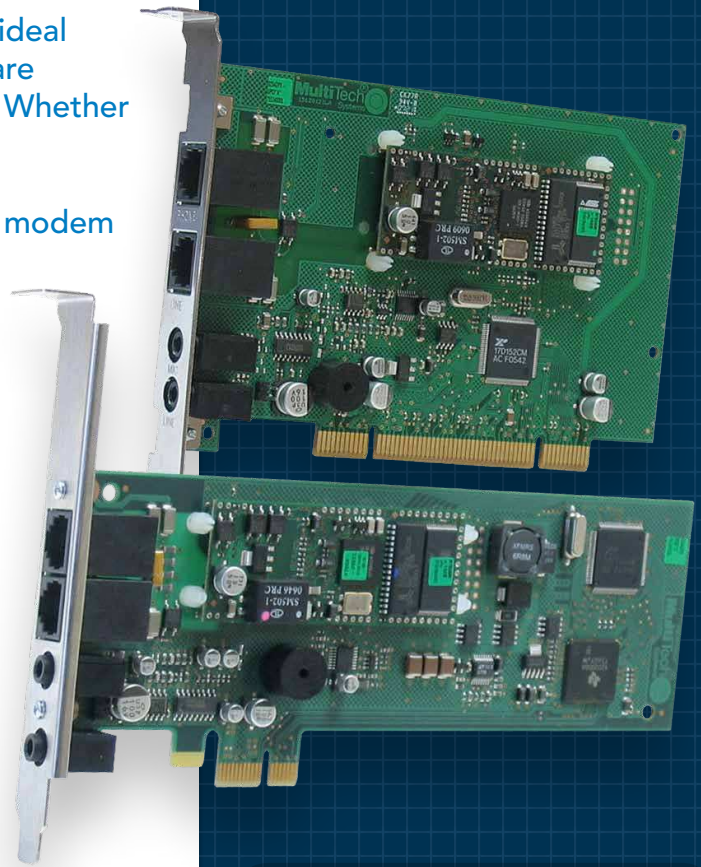


V.92 Internal Modem

The MultiModem® ZPX V.92 internal modem is the ideal choice for small- to medium-sized businesses that are looking for a remote device management solution. Whether your application need is out-of-band management, troubleshooting or sending updates to a remote management server, the MultiModem ZPX internal modem provides higher speeds and reduces transfer times. It includes a built-in processor to enhance performance and data throughput. It is approved for use in many countries around the world. This means one model can ship virtually anywhere.

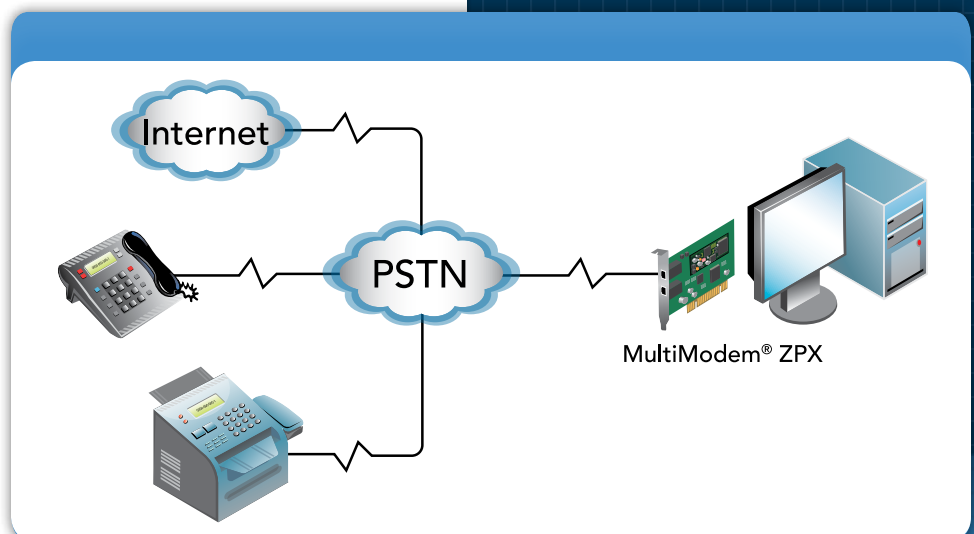
Features

- V.92/56K download speeds and 48K upload speeds when connecting with V.92 servers
- V.44 compression improves data throughput rates
- Class 1.0 and Class 2.1 faxing at speeds to V.34/33.6K bps (Super G3)
- Error Correction Mode (ECM) provides fast and reliable fax transmissions
- Voice support for voice mail and full duplex speakerphone (voice models only)
- Compatible with Windows® 2000/XP/2003/Vista/2008/7
- (32-bit/64-bit) and Linux
- U.S. Caller ID reporting
- Global approvals in many countries for worldwide use
- 3.3V and 5V Universal PCI or PCI Express models
- Telco adapters available for country localization
- Built-in processor does the work, so your computer doesn't have to
- Remote configuration for centralized setup and management
- DTMF tone detection
- Flash memory for easy updates
- Two-year warranty



Benefits

- V.92/56K download speeds
- V.34/33.6K Super G3 Fax
- Global approvals
- Universal PCI and PCI Express



Specifications

Rates

Data: V.92/56K downloads & 48K upload speeds from V.92 servers; V.90/56K downloads from V.90/K56flex servers; 33.6K bps transfers with other servers

Fax: 33.6K/14.4K bps

Standards

Data: V.92, V.90, enhanced V.34 & below

Error Correction: V.42, ECM

Data Compression: V.44, V.42bis, MNP® Class 5

Fax: V.34, Class 2.1 & Class 1.0, V.17, Group 3, Class 1 & Class 2, Error Correction Mode (ECM)

Voice: AT+V/TAM voice command set (voice models)

Video: V.80

Bus Type

3.3V & 5V Universal PCI or PCI Express (x1)

Connectors

2 RJ-11s; speaker jack & microphone jack (voice models)

Operating System Support

Windows 2000/XP/2003/Vista/2008/7 (32-bit/64-bit) & Linux

Physical Description

MT9234ZPX-UPCI: 6.03" L x 4.76" W; 3.3 oz (15.3 cm x 12.1 cm; 94 g)

MT9234ZPX-PCIE
(Standard Bracket): 7.13" L x 4.76" W; 3.1 oz (18.1 cm x 12.1 cm; 88 g)

MT9234ZPX-PCIE
(Low Profile Bracket): 7.13" L x 3.16" W; 3 oz (18.1 cm x 8 cm; 85 g)

Operating Environment

+23° to +140° F (-5° to +60° C)

Humidity: 20-90% RH noncondensing

Approvals

CE Mark

EMC: FCC Part 15 Class B, ICES-003 Class B, EN 55022 Class B, EN 55024

Safety: UL/cUL 60950-1, EN 60950-1, AS/NZS 60950:2000, CCC (MT9234ZPX-UPCI only)

Telecom: 47CFR Part 68, CS03, TBR21

Other countries also included

Ordering Information

Product	Description	Region
MT9234ZPX-UPCI	V.92 Voice/Data/Fax World Modem	Global
MT9234ZPX-UPCI-NV	V.92 Data/Fax World Modem	Global
MT9234ZPX-PCIE*	V.92 Voice/Data/Fax World Modem	Global
MT9234ZPX-PCIE-NV*	V.92 Data/Fax World Modem	Global

Ordering Codes

-UPCI	Universal PCI
-PCIE	PCI Express
-NV	No Voice

* Includes standard and low profile brackets.

Services & Warranty

Multi-Tech's comprehensive Support Services programs offer a full array of options to suit your specific needs. These services are aimed at protecting your investment, extending the life of your solution or product, and reducing total cost of ownership. Our seasoned technical experts, with an average tenure of more than 10 years, can walk you through smooth installations, troubleshoot issues and help you with configurations. Products include a 2-year warranty that can be extended up to 5 years via Multi-Tech's Extended Warranty program, which offers the convenience of Overnight Service* for optimal uptime.

Extended Warranty & Overnight Services

To give you peace-of-mind and protect your investment, our Extended Warranty Service Plans ensure your Multi-Tech products are covered for 1, 2, or 3 years beyond the manufacturer's warranty with an optional Overnight Service plan*.

Installation Support

Multi-Tech's Installation Support Service delivers priority service with the ability to work one-on-one with an experienced Multi-Tech technical support engineer, to guide you through the installation process for our products.

Technical Support Services

At Multi-Tech, we're committed to providing you personalized attention and quality service while providing you a quick response to your product support needs. We have several options of support for you to choose from.

For additional information on Support Services as well as other service offerings, please contact your Multi-Tech representative or visit www.multitech.com/support.go.

* Overnight replacement service is currently available for U.S. customers.

World Headquarters

Multi-Tech Systems, Inc.
2205 Woodale Drive
Mounds View, MN 55112 U.S.A.
Tel: 763-785-3500
Toll-Free: 800-328-9717
Email: sales@multitech.com
www.multitech.com

EMEA Headquarters

Multi-Tech Systems (EMEA)
Unit 1, Thames Court
2 Richfield Avenue
Reading, Berkshire RG1 8EQ
United Kingdom
Tel: +(44) 118 959 7774
Email: sales@multitech.co.uk

Produced in the U.S. of U.S. and non-U.S. components. Features and specifications are subject to change without notice.

Trademarks and Registered Trademarks: Multi-Tech and the Multi-Tech logo, MultiModem: Multi-Tech Systems, Inc. All other products and technologies are the trademarks or registered trademarks of their respective holders.

4/13 • 86002090 • © 2013 by Multi-Tech Systems, Inc. All rights reserved.

