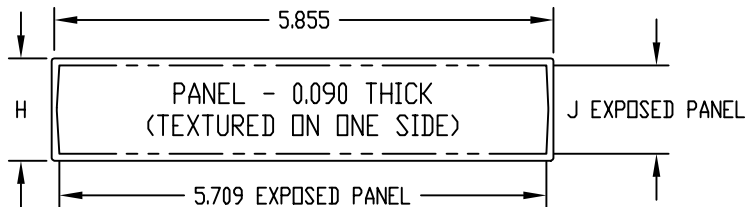
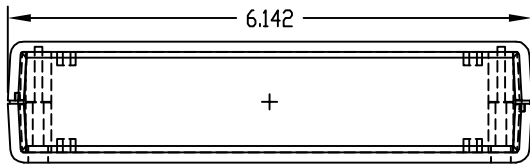
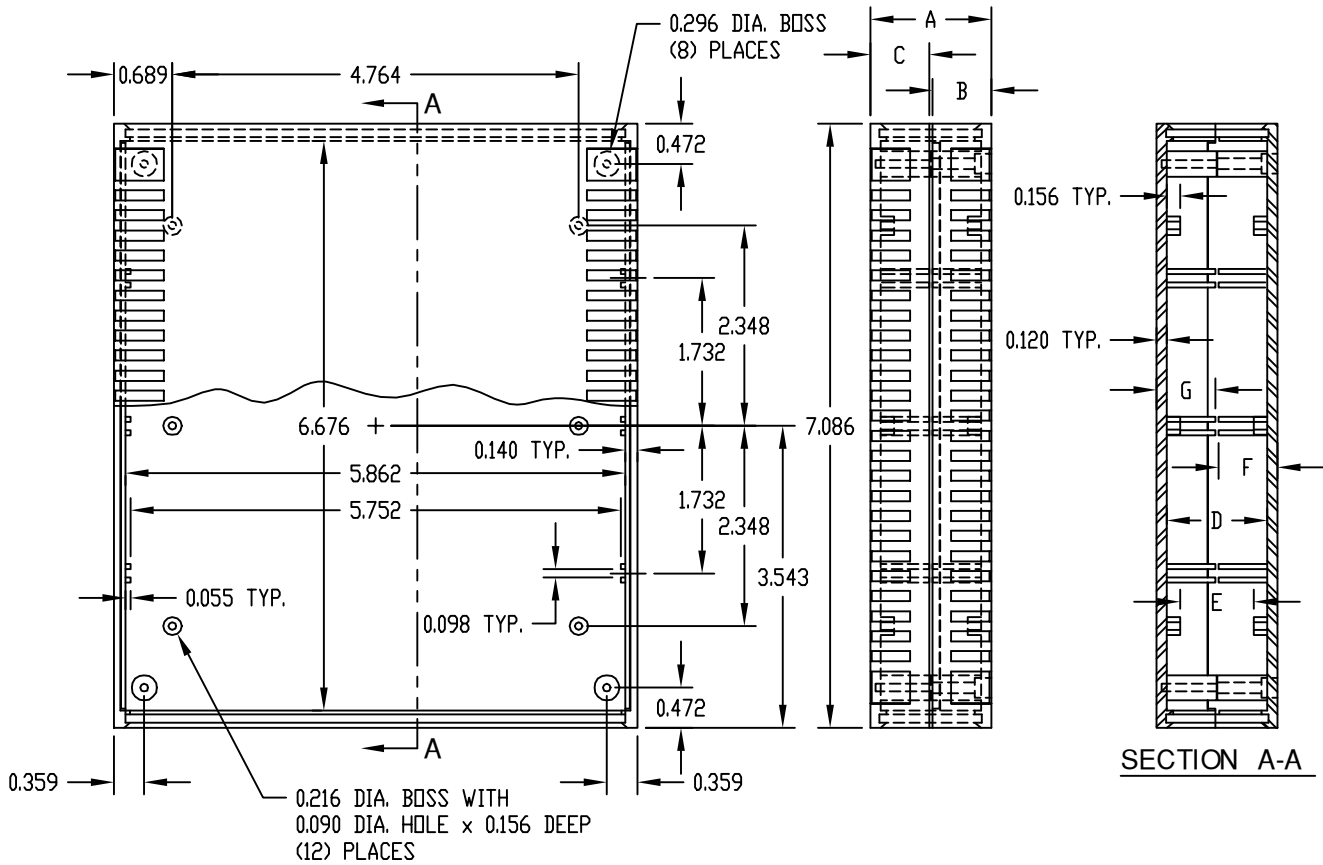


PART NAME

PLASTICASE

PART No.

PC-11463, PC-11464 & PC-11465



MATERIAL: ABS THERMOPLASTIC (UL 94-HB RATED)

FINISH: TOP & BOTTOM \_\_\_\_\_ LIGHT GRAY  
PANELS \_\_\_\_\_ DARK GRAY

FOR PC-11463 & PC-11464  
FOUR (4) M3 x 1.000 LG SCREWS SUPPLIED  
FOR ASSEMBLING BOTTOM TO TOP.

FOR PC-11465  
FOUR (4) M3 x 1.218 LG SCREWS SUPPLIED  
FOR ASSEMBLING BOTTOM TO TOP.

FOUR (4) RUBBER STICK-ON FEET SUPPLIED.

MOUNTING BOSSES USE EITHER M2.5 METRIC  
OR #4 STD. SHEET METAL SCREWS x 3/16 LG.  
(NOT SUPPLIED)

NOTE: ALL DIMENSIONS HAVE ±0.015 TOLERANCE  
UNLESS OTHERWISE SPECIFIED.

PART NO.	A	B	C	D	E	F	G	H	J
PC-11463	1.417	0.689	0.689	1.137	0.865	0.689	0.689	1.200	1.037
PC-11464	1.732	0.689	1.004	1.452	1.180	0.689	1.004	1.515	1.352
PC-11465	2.047	1.004	1.004	1.767	1.495	1.010	1.004	1.830	1.667