

PART NAME

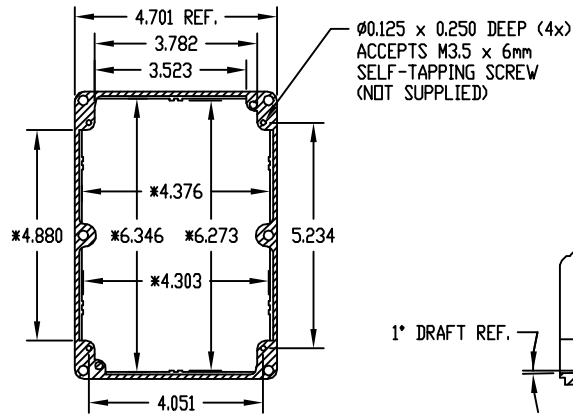
NEMA 4X DIE CAST ALUMINUM ENCLOSURE

PART No.

AN-1306, AN-1306-G, AN-2806 & AN-2806-B

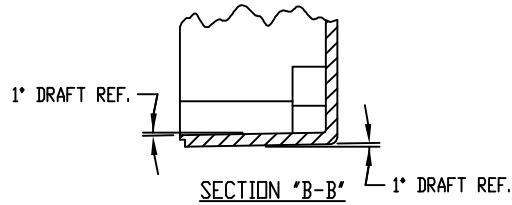
REV. DATE

9-8-10

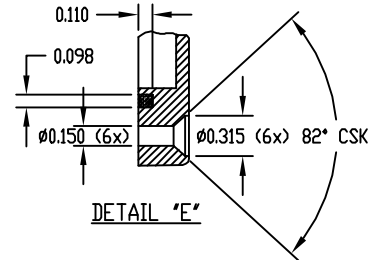


SECTION "C-C"

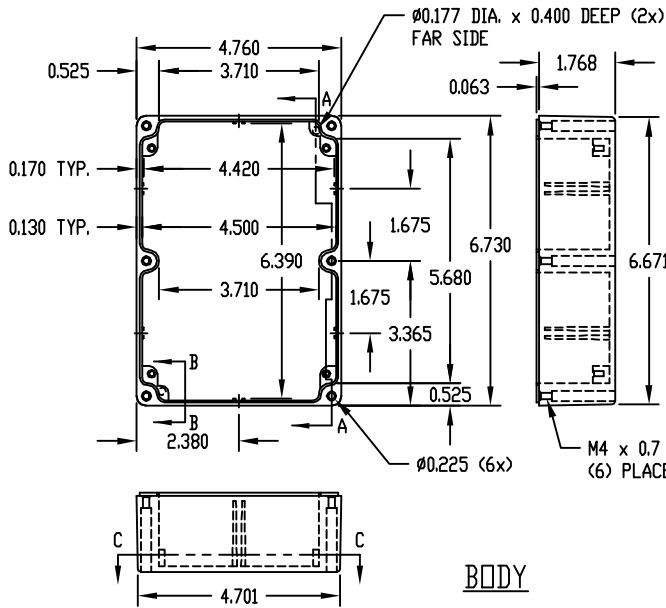
\* DIMENSIONS ARE AT BOTTOM OF ENCLOSURE



SECTION "B-B"

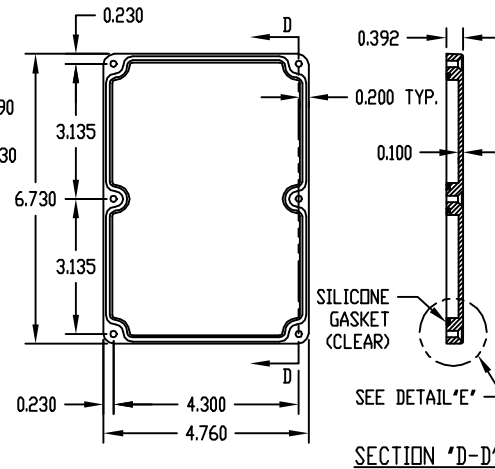


DETAIL "E"



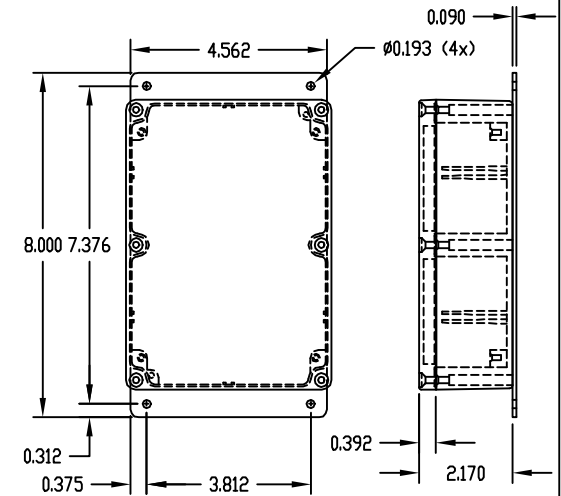
BODY

SECTION "A-A"



COVER

SECTION "D-D"



MATERIAL: ALUMINUM ALLOY #ADC-12

FINISH: NATURAL (NO SUFFIX)  
GRAY (SUFFIX -G)  
SMOOTH BLACK (SUFFIX -B)

NOTES:

- SIX (6) M4 x 20mm (0.787") LG. SCREWS SUPPLIED FOR ASSEMBLY OF COVER TO BODY.
- ALL HOLE DIAMETERS HAVE ±0.005 TOLERANCE. ALL OTHER DIMENSIONS HAVE ±0.015 TOLERANCE.

PART NO. AN-2806 & AN-2806-B ARE SUPPLIED WITH A WELDED ON MOUNTING BRACKET ONLY.