

PART NAME

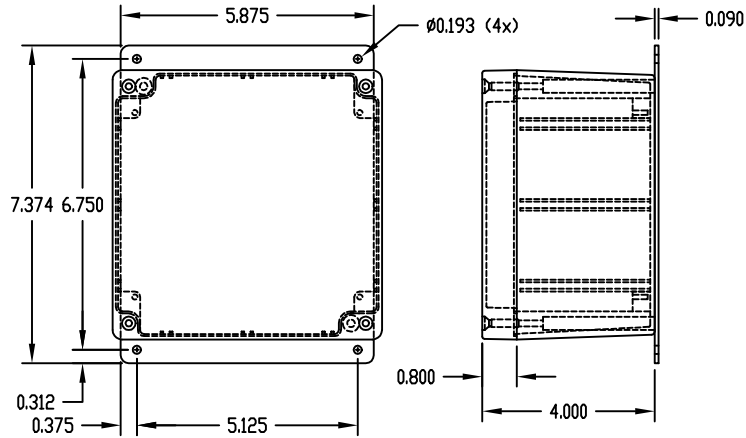
NEMA 4X DIE CAST ALUMINUM ENCLOSURE

PART No.

AN-1310, AN-1310-G, AN-2810 & AN-2810-B

REV. DATE

12-17-08

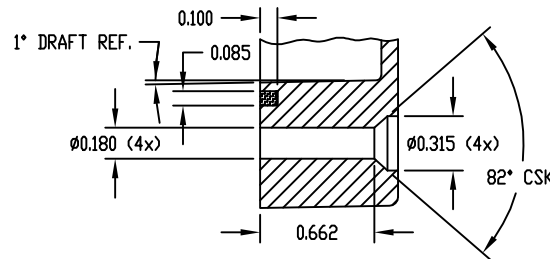


MATERIAL: ALUMINUM ALLOY #ADC-12

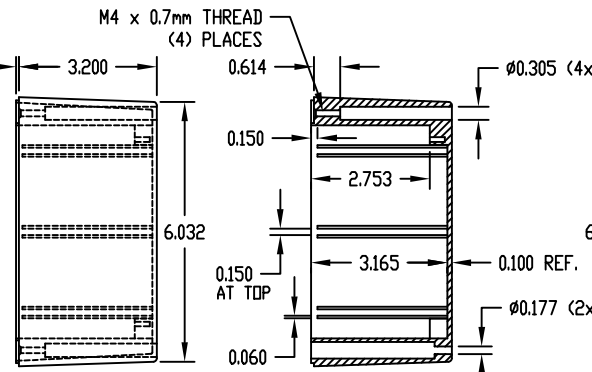
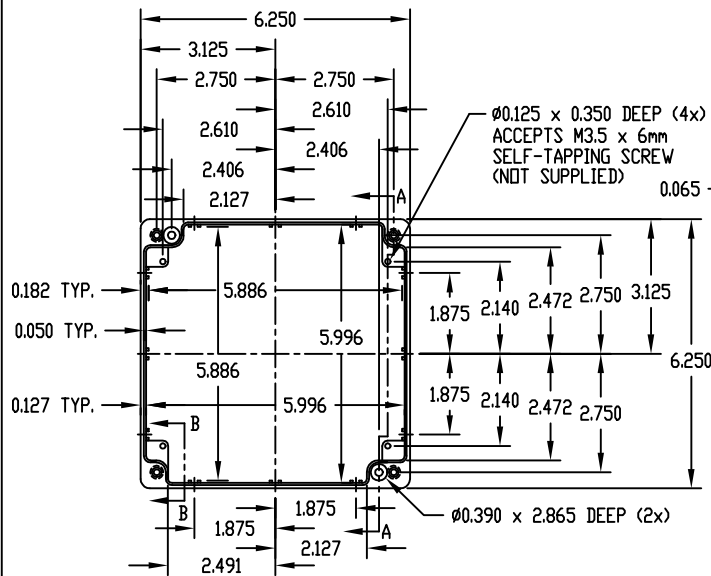
FINISH: NATURAL (NO SUFFIX)
 GRAY (SUFFIX -G)
 SMOOTH BLACK (SUFFIX -B)

NOTES:

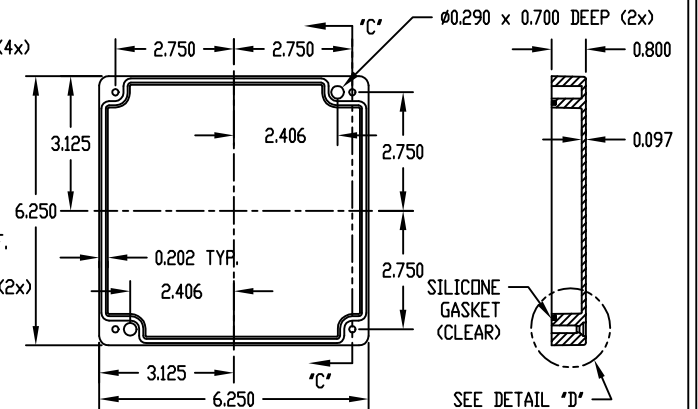
- FOUR (4) M4 x 32mm (1.260") LG. SCREWS SUPPLIED FOR ASSEMBLY OF COVER TO BODY.
- ALL HOLE DIAMETERS HAVE ± 0.005 TOLERANCE ALL OTHER DIMENSIONS HAVE ± 0.015 TOLERANCE



DETAIL 'D'

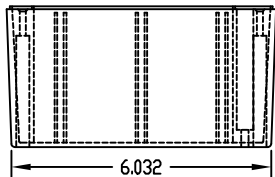


SECTION 'A-A'

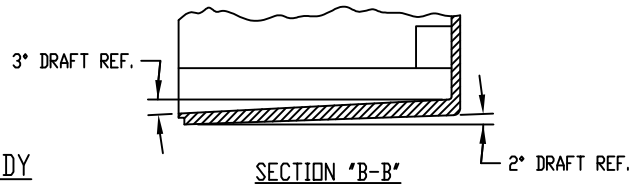


COVER

SECTION 'C-C'



BODY



SECTION 'B-B'

PART NO. AN-2810 & AN-2810-B ARE SUPPLIED WITH A WELDED ON MOUNTING BRACKET ONLY.