

PART NAME

NEMA 4X DIE-CAST ALUMINUM BOX w/MTG. BRKTS.

PART No.

AN-2850 & AN-2850-B

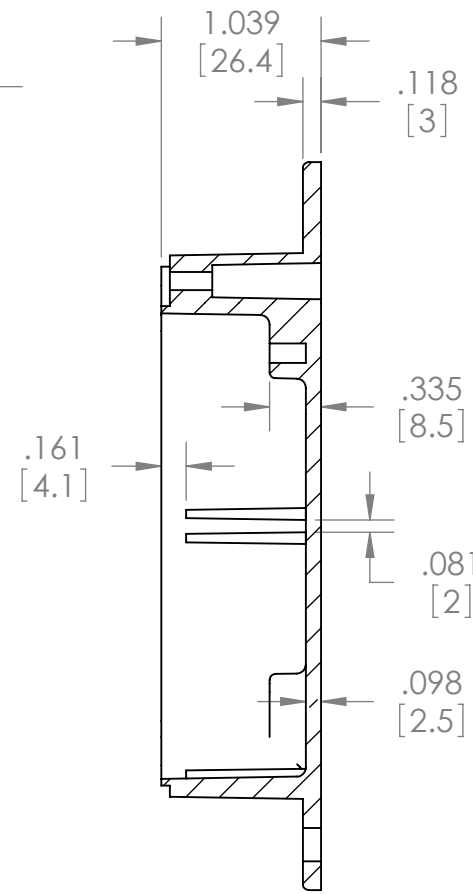
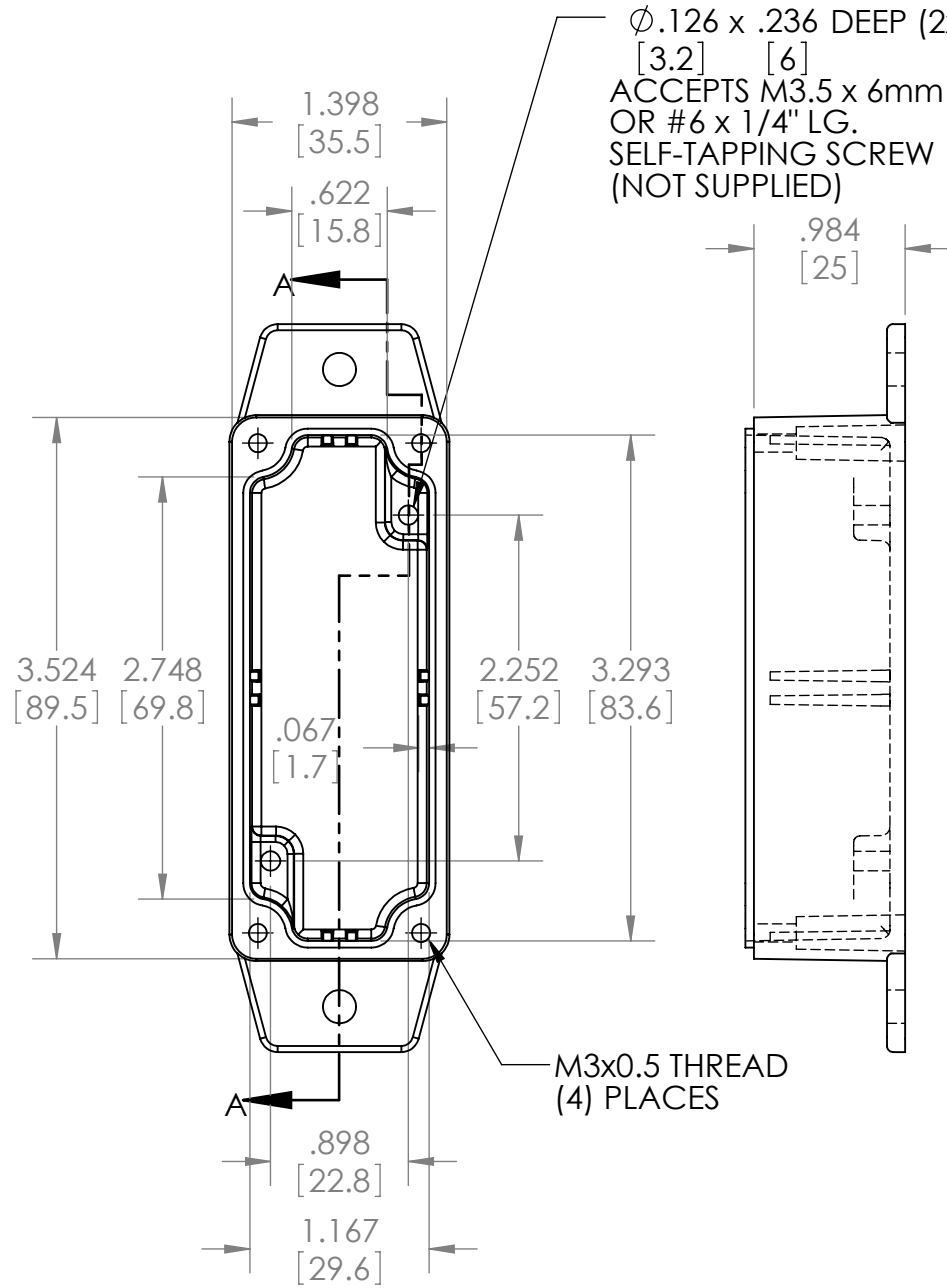
REVISION DATE

11-15-11

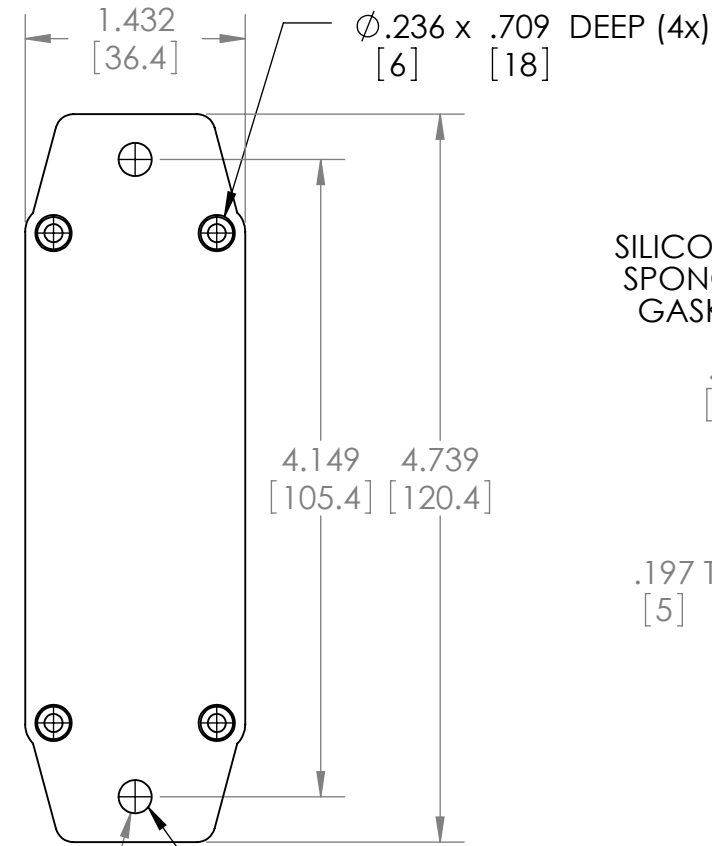
Ø.126 x .236 DEEP (2x)
[3.2] [6]
ACCEPTS M3.5 x 6mm [.24"] LG.
OR #6 x 1/4" LG.
SELF-TAPPING SCREW
(NOT SUPPLIED)

MATERIAL: ALUMINUM ALLOY #ADC-12

FINISH: NATURAL (NO SUFFIX)
SMOOTH BLACK (SUFFIX -B)



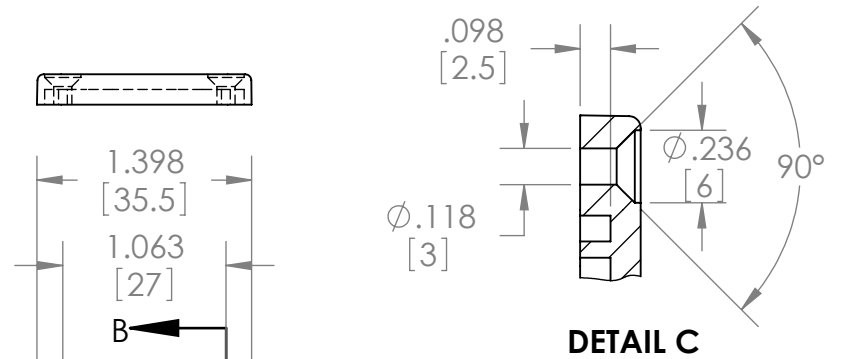
BODY



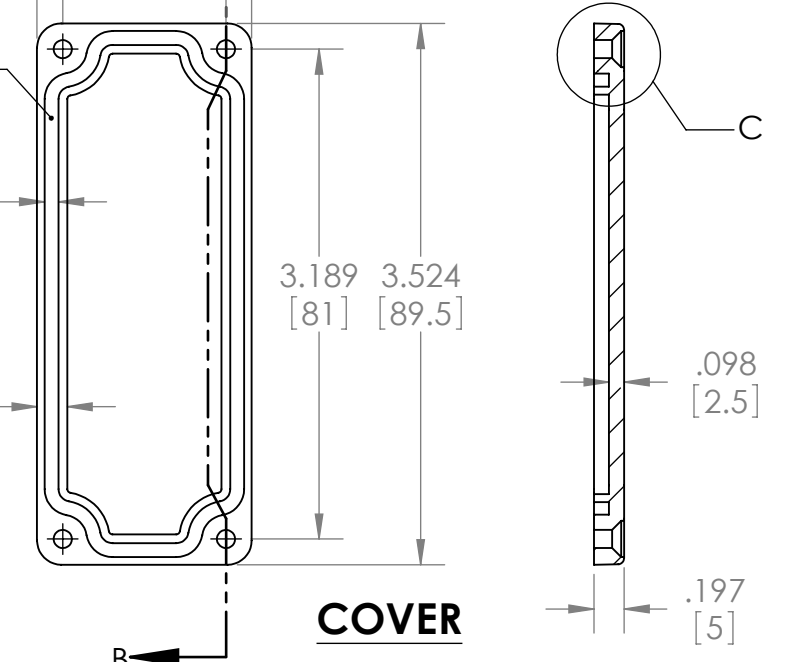
SILICONE SPONGE GASKET

.091 [2.3]

.197 TYP. [5]



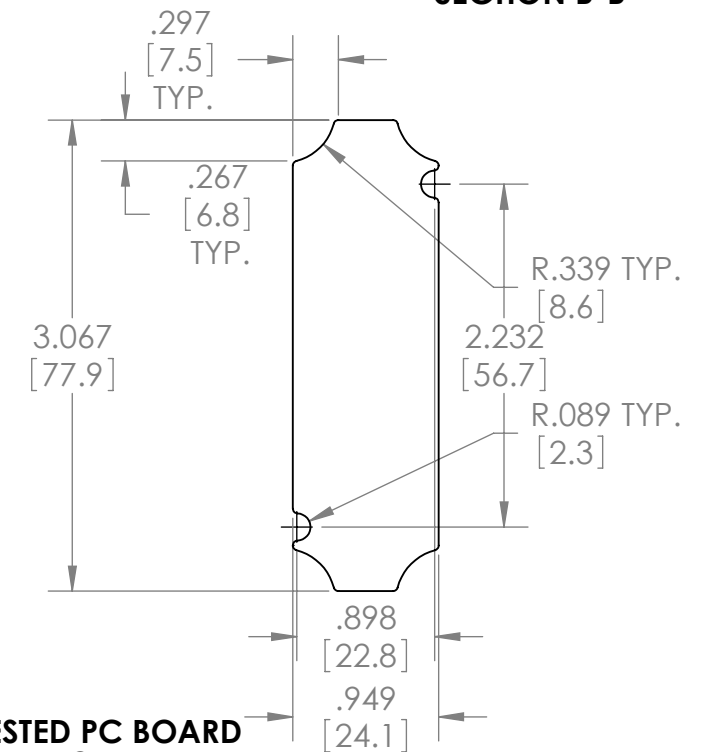
DETAIL C



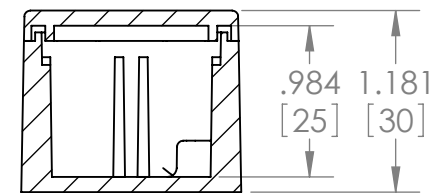
COVER

SECTION B-B

Ø.217 (2x) [5.5] MOUNTING HOLES ACCEPT M5 OR #10 PAN HEAD SCREW (NOT SUPPLIED)



SUGGESTED PC BOARD LAYOUT



- NOTES:
- 1.) FOUR (4) M3x0.5 x 12mm (.47") LG. CSK. HEAD STAINLESS STEEL SCREWS SUPPLIED FOR ASSEMBLY OF COVER TO BODY.
 - 2.) ALL HOLE DIAMETERS HAVE ±.005[±.13] TOLERANCE ALL OTHER DIMENSIONS HAVE ±.015[±.38] TOLERANCE
 - 3.) ALL OUTSIDE AND INSIDE DRAFT ANGLE: 1°

