

PART NAME

NEMA 4X DIE CAST ALUMINUM ENCLOSURE

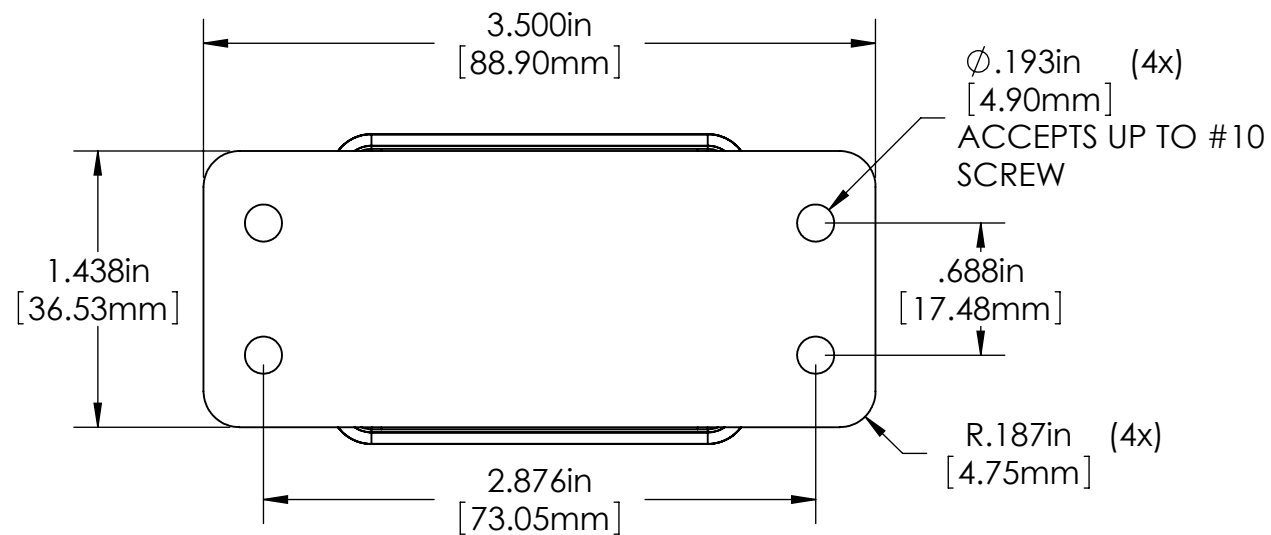
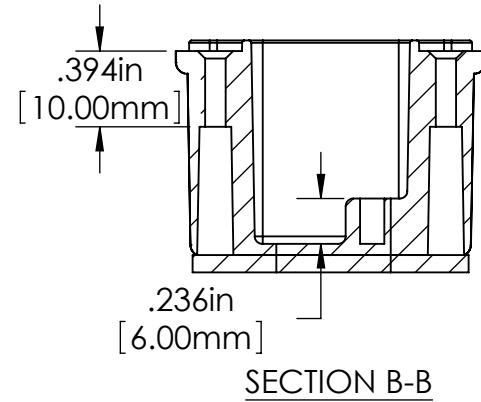
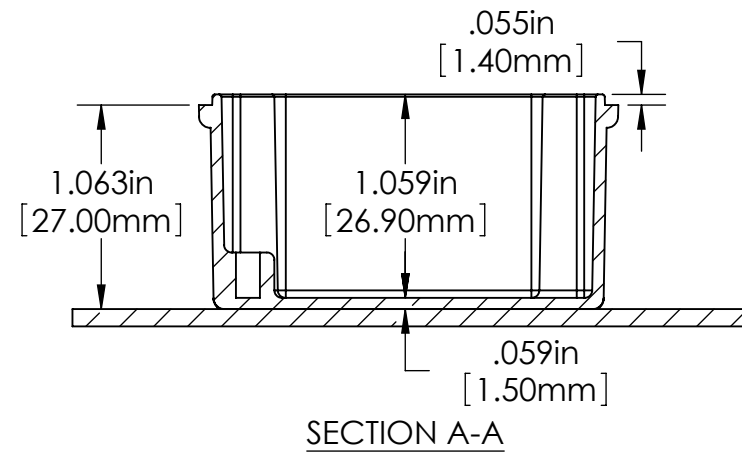
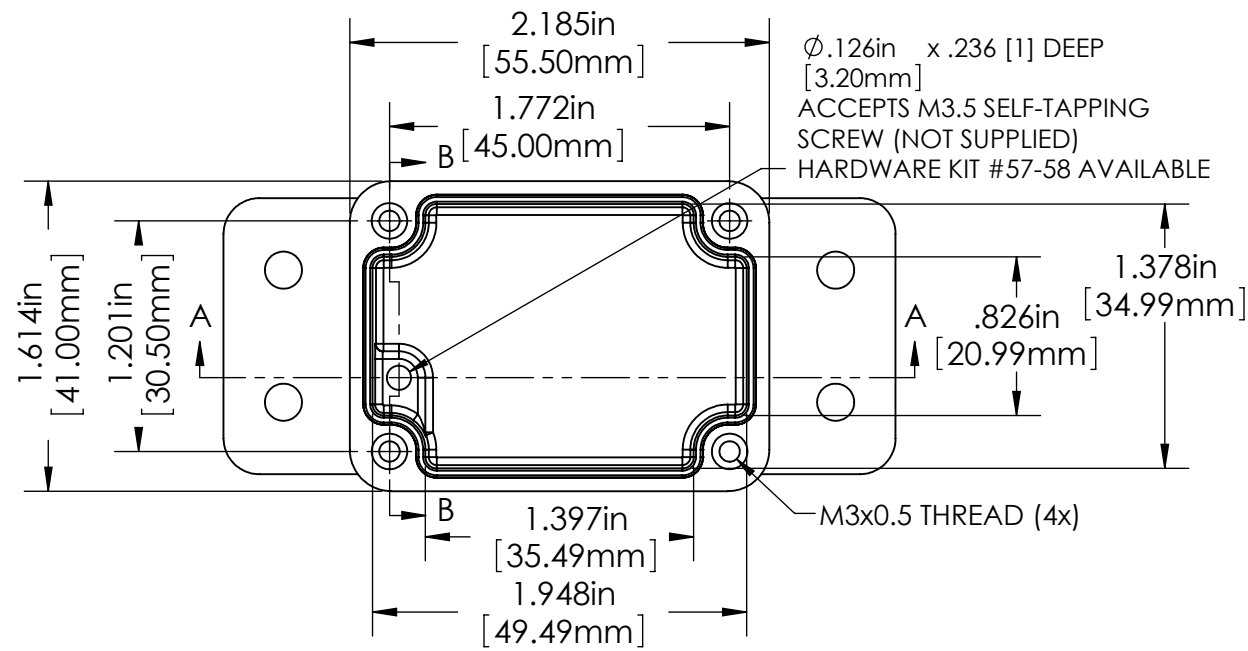
PART No.

AN-2818

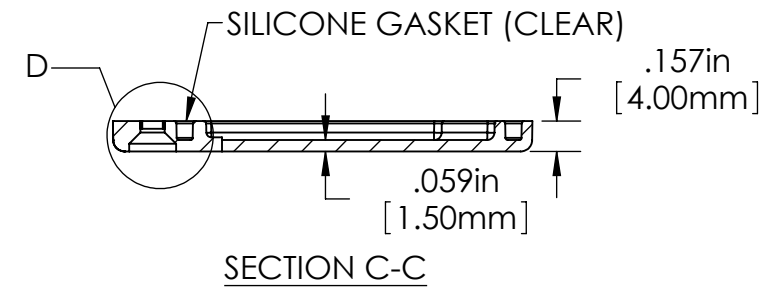
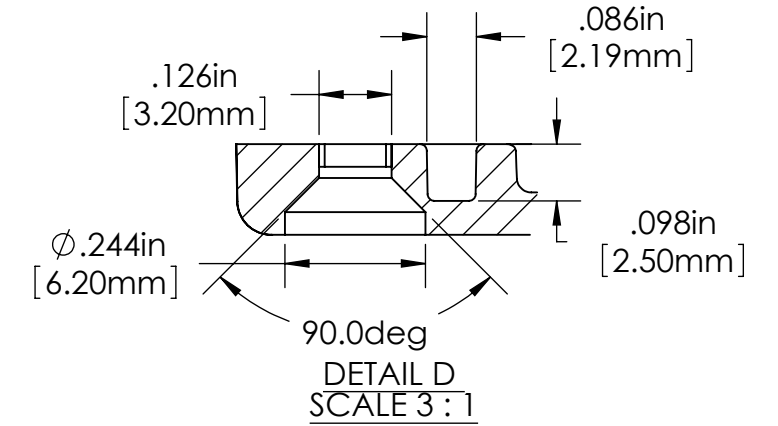
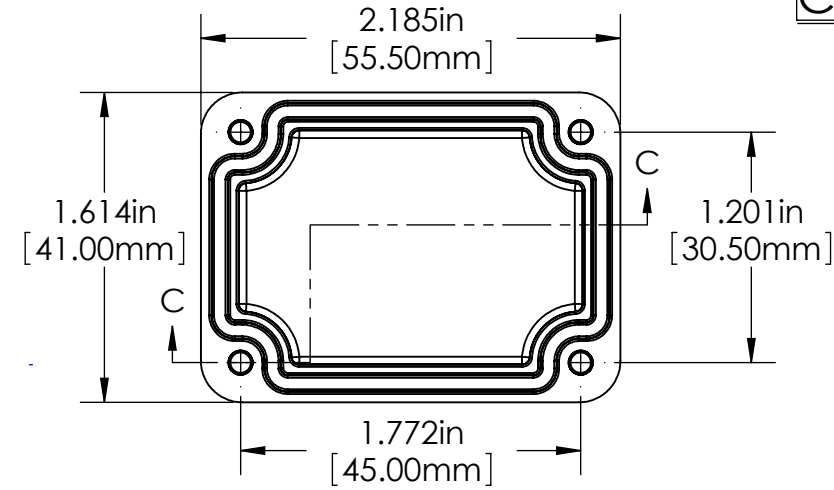
AN-2818-B

REVISION DATE 8/18/2010

BODY ASSEMBLY

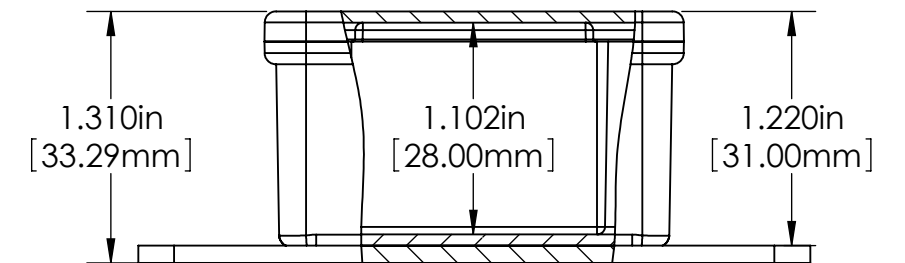
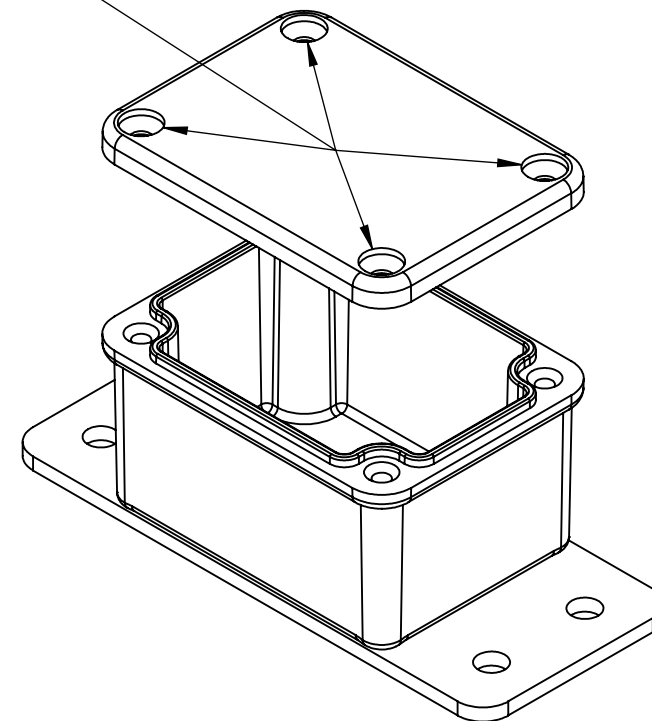


COVER



FOUR (4) M3x0.5 x 12mm (.472") LG. FLAT HD. STAINLESS STEEL SCREWS SUPPLIED FOR ASSEMBLY OF COVER

ASSEMBLY



MATERIAL: ALUMINUM (ADC-12 ALLOY)
 FINISH: NATURAL (NO SUFFIX PART NO.)
 SMOOTH BLACK (SUFFIX -B)
 TOLERANCES: \pm .015 [\pm .38]