

PART NAME

UTILIBOX (STYLE D)

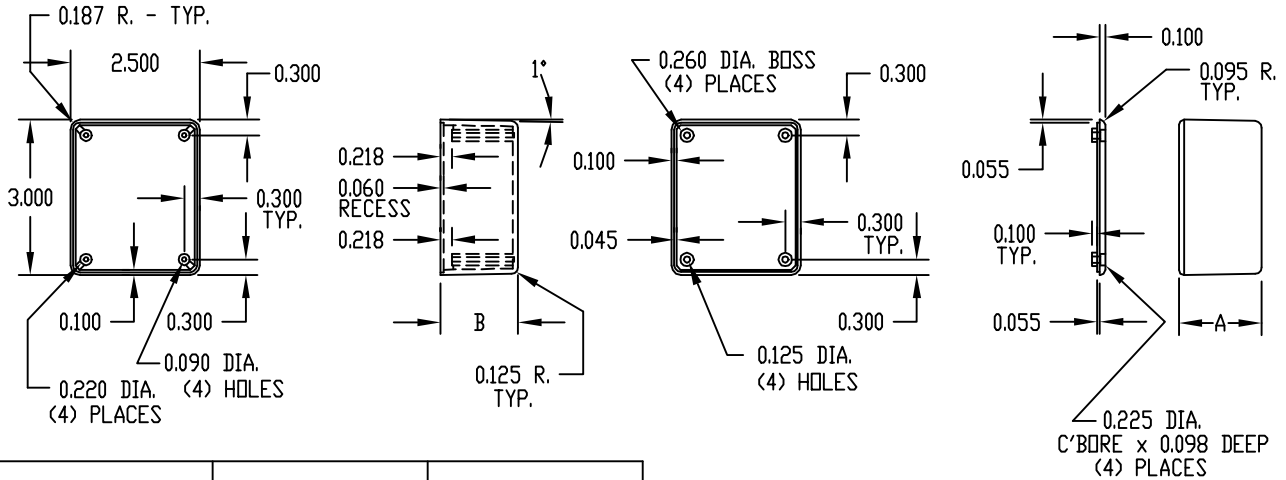
PART No.

CU-742 & CU-744

MATERIAL: HIGH-IMPACT POLYSTYRENE
COLOR: BLACK
FINISH: SMOOTH, MATTE

FOUR (4) #4 x 0.562" LG. SCREWS SUPPLIED FOR ASSEMBLY.

NOTE: ALL DIMENSIONS HAVE ±0.010 TOLERANCE UNLESS OTHERWISE SPECIFIED.



PART No.	A	B
CU-742	1.000	0.900
CU-744	1.600	1.500

PART NAME

PLASTIBOX (STYLE A)

PART No.

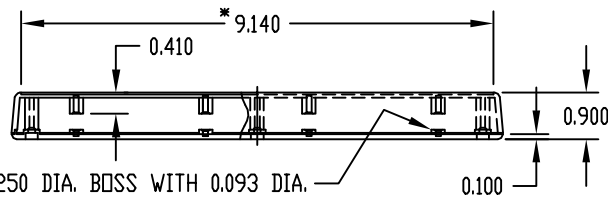
PT-11284 & PS-11285

MATERIAL: HIGH-IMPACT ABS
COLOR: BLACK OR GRAY

FINISH: PREFIX PS- TEXTURED BODY WITH SMOOTH TOP INSERT. PREFIX PT- TEXTURED BODY WITH TEXTURED TOP.

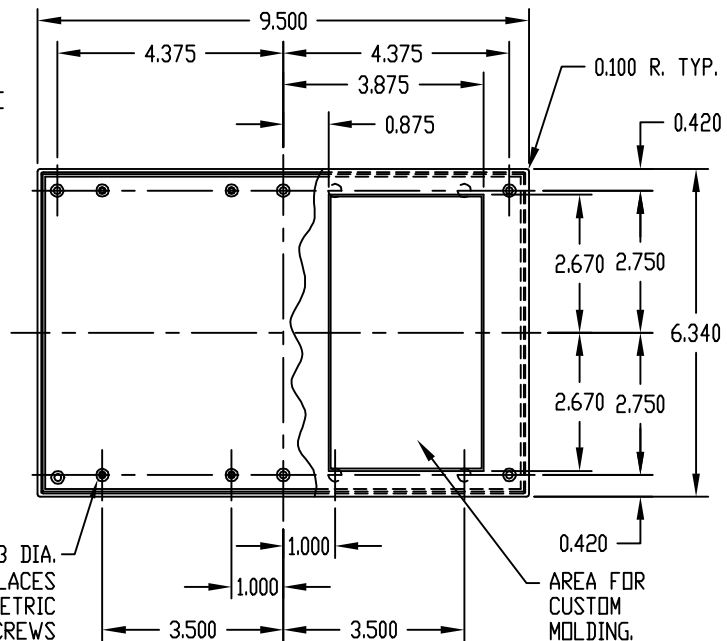
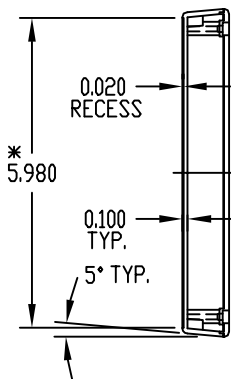
SIX (6) #4 x 0.375" LG. SCREWS SUPPLIED FOR ASSEMBLING TOP.

FOUR (4) NON-SKID PUSH-ON FEET SUPPLIED.



*-USABLE AREA ON COVER ALSO AVAILABLE FOR CUSTOM MOLDING.

NOTE: ALL DIMENSIONS HAVE ±0.015 TOLERANCE UNLESS OTHERWISE SPECIFIED.



0.250 DIA. BOSS WITH 0.093 DIA. HOLE x 0.310 DEEP (8) PLACES
 MOUNTING BOSSES USE EITHER M2.5 METRIC OR #4 STD. SHEET METAL SCREWS x 0.250" LG. (NOT SUPPLIED)